



Volume 44

Issue 12

Established 1975

THE Rowe Goal Post December 2025



photo by Donna Butzke

BOH December Refuse Garden News:

Did you know that the Refuse Gardens supplies families with a free blue bin for your recyclables? If you are in need of one, please ask Attendent Rob Beaumier. Also, that the Town of Rowe receives rebate dollars \$\$\$\$ for recyclables? These funds are used for **repairs, maintenance, hauls and oversight** of the Refuse Gardens. So thank you all who are already mindful and recycle.

Just a few benefits of recycling....

- Helps keep your tag price at a minimum
- Reduces waste sent to landfills and incinerators
- Prevents pollution and conserves natural resources
- Conserves energy
- Creates jobs & produces economic benefits

Thank you all for your efforts in helping our Town Refuse Gardens look beautiful and remain resourceful...We hope you and yours have a wonderful holiday season
....from all of us at the Rowe Board of Health!

Herb, Dan, Kathy, Rachel, Rob and Christine

Open Space and Recreation Committee (OSRC) Update

In Memory of Dave Rothstein

In November, the OSRC learned of the passing of Dave Rothstein, Land Protection Specialist at Mass Audubon. A tireless advocate for conservation and connecting people – and their stories – with the lands of western Massachusetts, Dave recognized the inherent conservation value of the Tunnel Road property posted for sale last year and helped galvanize the OSRC's efforts to conserve this important watershed and habitat for the Town of Rowe. During the past year, Dave was a critical partner in preparing for the town meeting vote, supporting the grant funding plan, drafting the purchase agreement and offer to the sellers, and liaising with town counsel. He was incredibly knowledgeable and an outstanding partner and resource to the OSRC for the past two years. Above all, he was an enthusiastic extension of our team and will be deeply missed by each of us.

In October, the OSRC was informed that the Town of Rowe had been awarded funding through the Massachusetts LAND (Local Acquisitions for Natural Diversity) Grant, and work is underway to apply for additional grant funding to cover the cost of the property. The OSRC's partnership with Mass Audubon and the Franklin Land Trust -- and our collective commitment to the acquisition of the Tunnel Road property -- continues.

Submitted by Amy Trevvett

SPECIAL ELECTION FOR VACANT SELECTBOARD SEAT
FEBRUARY 7TH, 2026 10 am - 2 pm

Earlier this month, Vice Chair Marilyn Wilson resigned from the selectboard. The remaining selectboard members voted to hold a special election on Saturday, February 7th, 2026. Nomination papers will be available from my office starting on Wednesday, December 3rd or by appointment as earlier as December 1st. The last day to get nomination papers will be December 18th at 5pm. Nomination papers must be returned with a minimum of 20 signatures from registered voters by December 20th at 5pm. There **will be vote by mail** for the special election. Applications for vote by mail will be included with your annual street list. There **will not be in-person early voting** for the special election.

The annual street list, dog license forms, and vote by mail application form will be mailed at the end of December. It is very important to fill out the street listing, as it provides information for our emergency services, school enrollment, and voter registration. Voters who do not return the street listing after a certain period of time will be inactivated as voters, and if they remain inactive long enough, will be removed from the voter rolls.

All dogs must be registered by March 1st, 2026. Dog licenses will be issued starting in January. Fixed dogs are \$5 and intact dogs are \$10. If your dog's rabies vaccine expired some time after March 1st, 2025 I will need a copy of the vaccine record in order to issue a dog license in 2026. If you have any questions please email at: townclerk@rowe-ma.gov or leave me a voice message at 413-339-5520 ext 103.

Submitted by Kevin Balawick, Town Clerk



photo by Meredith Sokol

Assessor's News

Submitted by Rick Williams

FY26 Property Values: FY26 is an interim update year. Assessors contracted with new appraisal consultant (Catalis/Patriot Properties) following retirement of long-term consultant (Duane Adams - Mayflower Valuations). Catalis conducted review of Assessor's AssessPro database and recommended certain changes to calculation tables including the depreciation tables to bring things up to date with current practices. This year's annual real estate sales analysis, reflecting a still thriving real estate market, resulted in residential values being adjusted as follows:

- ☐ building lots (~13%)
- ☐ excess land (~5%)
- ☐ homes (~1% to ~15% based on house type)
- ☐ yard items/out buildings (no changes)

Overall residential property valuation increased by ~**10.9%**. Both hydro power companies (Great River Hydro and Bear Swamp), still under PILOT agreements with the Town, saw no changes to their overall valuations. Total town valuation increased by ~**1.7%** to **\$509,915,628**. DOR approval of FY26 values was received on November 18.

FY26 Tax Rates/Tax Bills: Tax Classification Hearing held with Board of Selectmen on

November 20. MRF (Minimum Residential Factor) of **.500** was adopted representing the tax

burden shift from Residential (R) to Commercial-Industrial-Personal (CIP). Resulting FY26

split tax rates are **R/\$5.24** and **CIP/\$11.42** compared to last year's rates of R/\$5.14 and CIP/\$11.01.

Following DOR approval of tax rates, Assessors expect to sign FY26 Real Estate and Personal Property tax warrants during first week of December. First half tax bills should be mailed out shortly thereafter. Payments due within 30 days of tax bill postmark. Rowe's **Single Family Average Tax Bill** has increased by ~\$200 (or ~**13.1%**) to \$1,661.

Applications for Property Tax Abatement: Applications for abatement for FY26 real estate and personal property taxes are available online or at Assessor's Office. Applications must be submitted within 30 days after the 1st half tax bills are mailed. Filing of Abatement Application does not stay collection of your taxes. Assessors have 3 months from date application is filed to act on it.

Property Tax Exemptions: Mass General Laws (MGL) Chapter 59, Section 5 property tax exemptions are available to Rowe taxpayers who satisfy eligibility requirements:

- Clause **17D** – Surviving Spouse, Minor Child, Seniors (Exemption amount: \$220)
- Clause **22, 22A-E, Paraplegic** – Qualifying Veterans (Exemption amount: varies)
- Clause **37A** – Blind Persons (Exemption amount: \$500)
- Clause **41C** – Seniors (Exemption amount: up to \$1000)
- Clause **41A** – Seniors who meet ownership, age, and domiciliary requirements and whose annual gross receipts are within certain limits may be eligible to defer payment of their taxes. Deferred taxes, with interest, must be repaid when the property is sold or the taxpayer dies.

Applications for Property Tax Exemptions: Info and applications for FY26 **Senior** and **Veteran's Exemptions** are available online or at Assessor's office. Applications must be submitted by **April 1** or 3 months after first tax bills are mailed, whichever is later. Filing of Exemption Application does not stay collection of your taxes. Assessors have 3 months from date application is filed to act on it.

Motor Vehicle Excise Exemption: Per MGL Chap 60A, Sec 24, veterans who are 100% disabled – with proof of status from the VA - are eligible for full MVE exemption on **one** owned vehicle.

Personal Property Exemption: Per MGL Chapter 59, Section 5, Clause 54, personal property valued less than \$10,000 is exempt from taxation. This automatic exemption applies to businesses and second homeowners. (Second home personal property is assessed at 4% of house value.) Taxpayers with personal property assessed at greater than \$10,000 will receive tax bill based on full assessed value of their personal property (i.e., no exemption for first \$10,000 in value.)

Recent Property Transfers (Oct/Nov 2025): No new deeds were filed for this time period. Refer to Franklin County Registry of Deeds website at masslandrecords.com/franklin

Assessor's Meetings and Office Hours: Assessor's meetings are held (as posted) on monthly basis at Town Hall. Christine Bailey (Assessor's Administrative Assistant) has office hours on **Wednesdays and Thursdays (8am to 1pm)**. Contact Assessors' Office at **413-339-5520 x104**, via fax at 413-339-8585 or via email at assessor@rowe-ma.gov. For additional info please also refer to the Assessor's webpage at rowe-ma.gov.



Rowe Town Library News
Submitted by Molly Lane,
Library Director

HOURS:
Tuesday 10-5
Wednesday 12-8
Thursday 3-7
Saturday 10-3

Library of Things - Tool Lending Library.... Have you heard of these? They are both ways to borrow “things” from the library. We have many items, from small to pretty large, inside use and outdoor use. And we are always looking for suggestions and donations. Stop by to see our collection. Or give us a call to see if we own something you are looking for.

Upcoming Events:

Drop-in knitting/crocheting (or other yarn and fiber crafts), Tuesdays from 2pm to whenever. Starting Dec 2. Need some dedicated time to work on those pesky UFOs? Or just looking for a place to craft in company? We’re here for you! Bring your projects, we’ll provide the tea and coffee.

Window Stars w/Karen Soviecke December 4th @ 5:30pm - Pre-register

Kissing Balls w/Roberta Baker December 10th @ 5:30pm - Pre-register

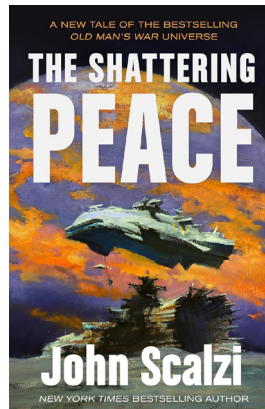
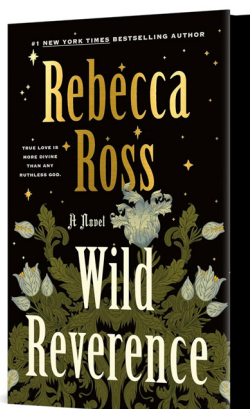
Monthly Book Chat on Thursday, December 18th Nov 20, 2025 5:30 PM

Drop-in for our December craft and make Pomander Balls!

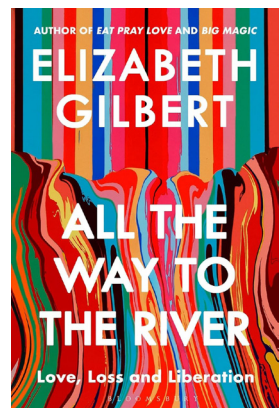
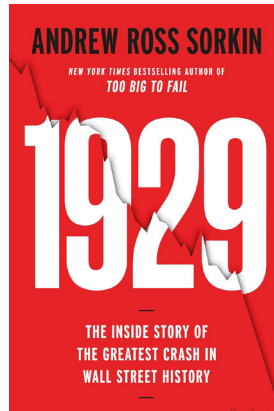
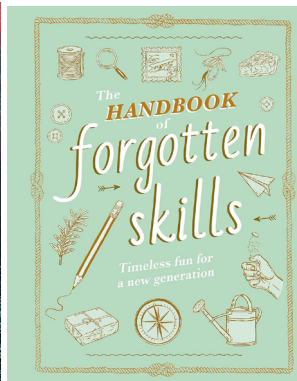
Library Closed - December 24th and 25th
Library Open New Year’s Eve 12pm-5pm
Library Closed New Year’s Day

Some New Books at the Library

Adult Fiction:



NonFiction:



Kid Graphic Novel:



Kids:



ROWE ELEMENTARY RESEARCH STUDY COMMUNITY MEETING

THURSDAY DECEMBER 11, 5:00 PM

LOCATION: ROWE ELEMENTARY SCHOOL

Does Rowe want to investigate joining Mohawk Trails Regional School District for grades Pre-K through 12, which is proposing a closure of all current elementary schools and building one new school on the current Mohawk Middle/High School Campus?

The Rowe School Committee has hired educational consultants, BERK12 to conduct a research study on the past and current educational situation at Rowe Elementary School and how it might fit into the MTRSD proposed plan.

Please plan to attend this important meeting to have an opportunity to gain information about the Rowe School District, while also sharing your thoughts and perspectives on the future of Rowe Elementary School, including the current question on the table: "Should Rowe continue to study the regional option, and move forward as an active member of the sustainability study.

Readsboro Lions Club – Christmas Party

SATURDAY - December 13, 2025

All Rowe seniors are invited to the Readsboro Lions Club Christmas Party to be held at the Readsboro Elementary School at 301 Phelps Lane, Readsboro, VT!

The event begins at:

11:00 a.m. to 12:30 p.m.

12:30 p.m.

1:00 p.m.

Social Hour

Santa visits!

Dinner Served

Come and join the festivities! No reservations – just show up!



Update on Our Town Mosaic

Residents, young and old, have been spending the first and Third Wednesdays of the month at the library working on our mosaic. These pictures were taken on Nov. 19th at the library. There are three pieces of the mosaic, and we have pictured here the two pieces that are almost done. The 3rd piece will begin in Dec. So come out and work on this beautiful art piece!



Submitted by Donna Butzke

ROWE ELEMENTARY SCHOOL



It has been busy here at the school this past month. We had student-led conferences at the end of October. Working hard to communicate and engage families has been our goal this year and we had almost %100 attendance at the conferences. These conferences are a valuable tool to help families learn more about their child as a learner and to help the teachers learn more about their students. Teachers are continuing to find creative ways to engage the students in new and different ways. I encourage you to come see all the great things happening at the school.

Students in the 5th and 6th grades took a hike out into the community Wednesday November 12th to observe archaeologists at work as part of the Bear Swamp Project. They learned about how they dig test holes, why they choose to dig where they do and the interesting artifacts they have found when digging in the ground. Finding ways to be informed about what is going on in our communities, inside the school and out is a piece of the Rowe School Promise we recite each day, "Be responsible citizens of our local and global communities".

Continuing that theme, the school held a Penny War fundraiser for the Charlemont Food Pantry in support of raising funds for those who are food insecure. The Penny War was a resounding success and collected over \$1200. It is a wonderful, concrete example of how something as small as a penny, when joined with the pennies of others can really make a difference. This is something that is put into practice at Rowe School every single day from smiles in the hallway, to bending down to help a younger student learn to tie their shoe. And now we're spreading those small acts of kindness out into the world with thousands of pennies and silver coins. We thank everyone who found a way to contribute.

Just prior to Thanksgiving, the entire school held a community writing day where pairs of older and younger students got together to write letters to elderly residents of Rowe. We're hoping to build more connections and invite the community to join us at school in ways they might be interested in. If you are looking for ways to feel more connected to school and what we do here, or know someone who is, please reach out and let us know!

We had our Thanksgiving Community Lunch on November 19th. It was great to see so many community members and families joining the students in the cafeteria. Our December Community Lunch, a ham dinner, will be on Wednesday, December 17th at 11:45. I hope you can join us. If you plan on attending, please make sure to let Laurie or Kelly know by December 16th as it makes planning for the appropriate number of meals and seating much easier.

With Thanksgiving just past, I want to reflect on some of the things I am grateful for. I am grateful to be a part of the Rowe School staff. I've never known a more dedicated, talented, and caring group of educators. I'm grateful to be part of the Rowe School Community, whose engaged and caring parents, guardians, and families help support the work we do in the school. I'm also grateful for students and staff who take their learning, both academic and social-emotional learning, seriously and who care about their classmates, the beautiful setting where we work, perfect for so much outdoor learning, and finally for our silly, sweet, and creative group of students who make me laugh every day.

On a final note, we are looking for after-school activity leaders. Are you interested in running a 4-6 week club on cooking, gaming, sewing or knitting, arts and crafts, science or computer related or something else? If so, please call me. It's fun for them, and it will be fun for you!

As always, if you have thoughts, questions, or comments, please call me at 413-512-5101. You can also email me at jfriedman@roweschool.org. I look forward to hearing from you

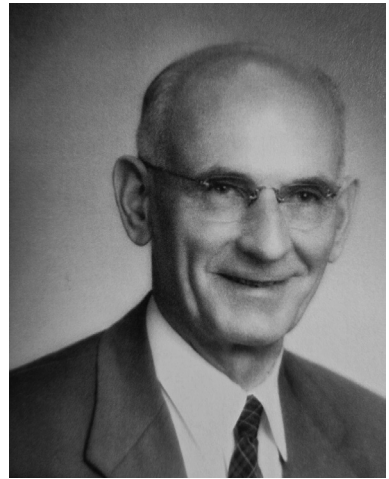
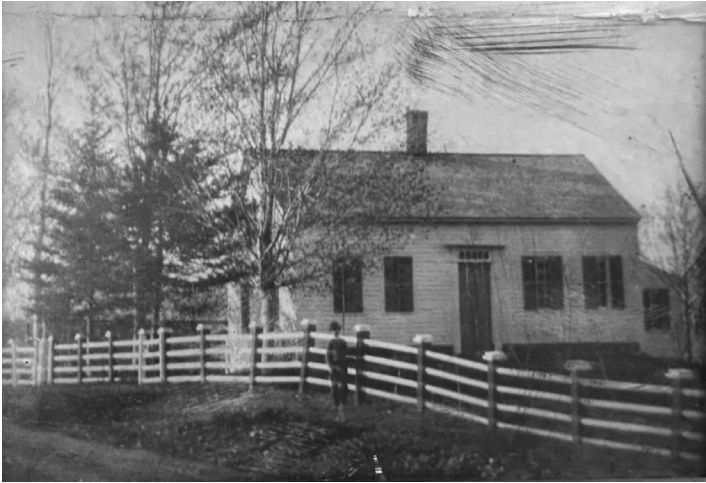
submitted by Jon Friedman



Who Haunts Your House? Part 2

Submitted by Joanne Semanie

We further investigate a few of the people that lived in familiar houses about town. It is nice to be able to put some faces with these homes and knowing where they lived and a little bit about them gives us a fuller picture of times gone by.



7 Middletown Hill Road has seen quite a few changes over the years. I am sure Myron Newton visits occasionally to see how things are. Myron kept bees all over town for most of his life. He had an observation hive built into his “honey room” at the back of the barn.



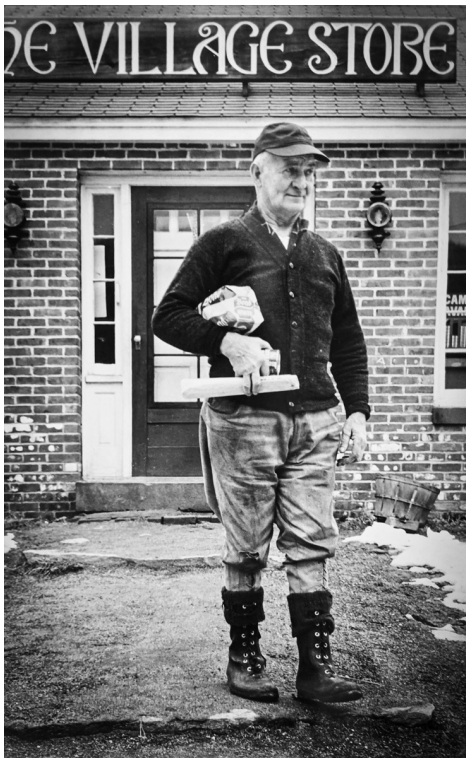
Next up in this month's edition is 6 Kings Highway. For many years the home of Rae Kemp and Helen McCarthy. Both women were instrumental in creating the Rowe Historical Society and their namesake the Kemp-McCarthy Museum.



On the left, Rae Kemp (center) on her high school graduation. This white dress is part of the costume collection at the museum. It needs to be seen to appreciate how tiny it is. On the right is a photo of Helen and Rae. I dare say they are sure to be visiting the museum.



Lawrence Bolton purchased this property in 1928 and lived there until he died in 1976.



The house now on Ford Hill Rd.

Last in this month's episode is the Wells Farm at 106 Middletown Hill Rd.



This was the home of the Wells family for generations.



The person of interest today is Laura Zylpha Ballou Wells. She was a quilter and one of her works is in the collection of the museum.

PELHAM LAKE PARK NEWS



photo by Claudine Poplawski

Reminder: Forest Management Work at Pelham Lake Park

Pelham Lake Park would like to remind residents that forest management work is scheduled to begin this winter in the area of Davis Mine Loop trail. During this time, the harvest area will be closed to all recreational use for safety purposes. The complete operations, stewardship, and climate plans can be found on the Pelham Lake Park website. Initial closure, progress updates and reopening will be shared on the park's social media platforms. As always, residents can reach out to the park manager with any further questions.

Overview of Work

Rowe's Park Commission, in partnership with the Forest Climate Resilience Program and the Town's forester Alex Barrett, have proposed a climate-smart forestry demonstration project at Pelham Lake Park. The project will help to address forest health and climate vulnerabilities identified in Pelham Lake Park's Forest Stewardship Climate Plan, following a multi-year public input process. It aims to demonstrate how innovative forest stewardship practices can be used to promote healthy, climate resilient forests.

The central practice here is to install 2, 2-acre patch cuts with reserves (strategically retained trees in an otherwise clear-cut area) on either side of the Davis Mine Trail, close to the parking lot on Davis Mine Road. One of these patch cuts will then be surrounded by a slash wall, a large wall of woody material, to exclude deer and protect young trees.

Creating a demonstration forest is multi-purpose, displaying how climate smart forestry practices can improve the health of the forest while offering opportunities for education and monitoring. Educational efforts would continue to engage school students in the park's care but also expand efforts to include signage and virtual educational opportunities for local woodlot owners, conservation professionals, and park visitors. Monitoring will focus on measuring the current resilience of the forest and eventually identify how the demonstration project is influencing resilience, allowing management practices to be improved over time.

submitted by Briel Gibson, Park Manager



photos by Sue Williams

A Peek Into Rowe's Past – From the Rowe Historical Commission

An Archaeological Dig & Rowe School Visit

On November 10th, the Rowe Historical Commission coordinated an opportunity for Rowe School students to visit the archaeological dig along Tunnel Road, part of the National Grid Bear Swamp Feeder Project. Fresh snowfall added a bit of magic to the scene, and the walk to the site proved to be just challenging enough to feel like an adventure.

The archaeological team from SWCA Environmental Consultants welcomed the students and shared how their survey fits into the larger project. Before National Grid can replace utility poles in certain areas, the Commonwealth requires a review to ensure that work does not disturb any significant historical or archaeological resources. Rowe has long been considered an area with potential historic activity, making it an ideal location for an intensive archaeological survey.

At the site, students learned how archaeologists investigate the past using shovel test pits, mapping tools, and careful soil analysis. They explained how even small finds—like the historic nails uncovered during this survey—can help date past structures or activities once analyzed in the lab. The archaeologists also shared stories from their prior fieldwork across New England and demonstrated how their equipment works.

The students listened intently, asked thoughtful questions, and even enjoyed waving at passing cars and trucks (earning a few enthusiastic honks in return). Experiences like this bring to life one of the Historical Commission's central goals: connecting Rowe's residents—especially young learners—with the history beneath our feet. By helping students see how archaeology protects and preserves important pieces of our shared past, we build future stewards of Rowe's heritage.

Student reflections:

"I was into the pictures of artifacts they showed. It was interesting when they found brick and nails." Paisley Cormier (5th Grade Student)

"It was fun and interesting and inspiring. It was another idea of a job I could have. I didn't even know when I drove or walked, anywhere I stepped there could be a piece of history. Thank you to the people for rescheduling it so we could go." Eva Joyner (6th Grade Student)

"I thought it would be a massive dig, but it was small. He showed us a picture of a really cool spear head (found on another dig)" Anothony Pariseau (5th Grade Student)

As always, the Rowe Historical Commission remains committed to honoring our town's past through careful documentation, preservation, and public education. In keeping with our charge under Massachusetts General Laws Chapter 40, Section 8D, we work to identify and protect Rowe's historical and archaeological resources while helping our community—especially its youngest members—understand the stories and places that shaped our town. Opportunities like this student visit strengthen that mission and ensure that Rowe's heritage continues to be valued, shared, and carried forward.



— Justine Krumm, Rowe Historical Commission and Emily Cross, Rowe School



wreath-making with the COA



photos by Donna Butzke

File of Life

A *File of Life* is a simple, yet crucial document, that can be placed on your fridge next to your MOLST form (if you have one). It provides first responders important information regarding your health, your medications, your emergency contacts when/if they need to respond to an emergency at your home.

What is included in a File of Life?

- ☐ **Medical history:** new/chronic health conditions, allergies, blood type.
- ☐ **Medications:** a list of all prescription medications and over-the-counter medications.
- ☐ **Emergency contacts:** names and phone numbers for those who you would like to be contacted in the event of an emergency.
- ☐ **Other vital information:** Preferred hospital, primary physician, existence of a DNR/MOLST form.

How it helps?

- ☐ **Provides critical information:** It gives first responders immediate access to your medical history, which is vital if you are unconscious or unable to speak.
- ☐ **Speeds up treatment:** This information can help them start treatment faster and more effectively.
- ☐ **Ensures proper notification:** It provides the necessary contact information for family and medical professionals to be notified quickly.

How to use it?

- ☐ **Contact** your Town Nurse or Public Safety Office to obtain the File of Life document/fridge sleeve.
- ☐ **Fill it out:** Complete the card with up-to-date information.
- ☐ **Place it visibly:** Place the completed card inside the magnetic sleeve and attach it to the outside of your refrigerator door.
- ☐ **Keep it current:** Regularly review and update the information to ensure it is always accurate

submitted by Rachel Lewis

**** Council on Aging readies for Winter ****

The COA was pleased to host another year of beautiful and festive wreath making! A huge thank you to our own creative connoisseur and wreath-maker Carol Lively for making exquisite wreaths for us to all decorate. We had bobbles and berries, fruit and flowers, and bows galore! Fun was had by all who participated. Make sure when driving through our lovely town to look out for all the fantastic new wreaths on display!

UPCOMING ACTIVITIES

WALKING CLUB: runs each Monday in December starting Monday, December 1st at 10am. The walk will be 1-1.5 hours of moderate intensity so make sure to bring good walking shoes and water. MEET AT THE TOWN HALL! No need to sign up- just show up ** In the case of inclement weather, the walking club MAY be cancelled. Use your best judgement for your own safety**

December Third Thursday Coffee Morning: will be skipped due to the close timing to the holidays- see you in January!

Don't forget the Annual Christmas Luncheon: To be held on Friday, December 5th from 12-2pm at the Rowe Camp and Conference Center. **Pre-registration was REQUIRED by November 5th**- we will see all those there who signed up!

January Third Thursday Coffee Morning: Join us for our annual VISION BOARDS project. Start thinking about your hopes and dreams for the upcoming year as we ring in the start of the new year with this reflective craft.

BOWLING- Bowling has begun again! Each Wednesday from 3-5pm at the Shelburne Falls bowling alley, you can expect to bowl with fellow resident seniors. For now, the cost is FREE! To enquire or get on the mailing list, please contact Stefano at pickleballstefano23@gmail.com

NEW Coffee and Puzzle Weekly Meet-Up: Your COA has been hard at work organizing a new drop-in activity. On the 2nd floor in the Town Hall, outside the fitness room, you will find a coffee/tea station and a puzzle set up and ready to go for you every Tuesday and Wednesday from 10am-12noon- bring a friend or come alone but drop in to add a few pieces in the community puzzle while enjoying a brew.

Memory Café and Caregivers Support Group: The Shelburne Senior Center is offering two helpful resources for residents who are caring for seniors. The Memory Café is held on the third Friday of each month, (December 19th) from 12 to 2, and offers a healthy lunch, a speaker or entertainment, and camaraderie for seniors and their caregivers. Also, the center offers a Caregiver Support Group on the first Monday of the Month, (December 1st) at 2 p.m. Both these resources are offered for free, and the center requests that you sign up a day or two ahead of time by calling 625-2502.

submitted by Rachel Lewis

The Monday Walking Group went south to Zoar and walked the road from the underpass to Zoar Gap and back along the railroad track.



photo by Nan Williams

The winners of the Fall-a-Palooza day:

Scarecrow contest:

- Adult - Justine Krumm and Aaron Poulin
- Child - Harper Grace Alvord

Thanks to judges Jane Kaufman, Janet Cowie, and Kathy Atwood

Cook-off contest:

Tied - Briel Gibson - Caramel Apple Cheesecake
Erin Ingwersem - Buttermilk Apple Cake

Thanks to everyone who made a dish for the cook-off and all those who voted. It was a huge success.

Submitted by Cyndie Stetson

December Birthdays

- 9 - Laurie Ash
- 11 - Kristen Johnson
- 11 - Jonathan Lively
- 12 - Nancy Williams
- 12 - Jim Lively
- 12 - Danette Reynolds
- 13 - Michael Denson
- 13 - Seth Lively
- 14 - Barbara Roche
- 15 - Leonard Brown
- 15 - Craig Brown
- 16 - Walter Quist
- 17 - Connie Sherman
- 20 - Johnathon Boyd
- 20 - Barbara Fisher
- 22 - Carol Lively
- 22 - Glenn White
- 23 - Susan Gleason
- 23 - Seamus Stine
- 23 - Richard Vega
- 24 - James Mckee
- 24 - Kevin Myers
- 24 - Anne Besgen
- 25 - Michael Lively
- 25 - Melissa Houghtaling
- 26 - Joyce Boutwell
- 27 - Julie Sprague
- 28 - Bill Loomis
- 28 - Ellen Miller
- 29 - Danielle Beaumier
- 30 - Deborah Miller

If you would like to add or remove a name from this list, please contact me at: GoalPostEditor@gmail.com

Town Departments

The Town Hall is Open Monday-Thursday 8:00am-4:00pm (413) 339-5520

Position/Dept.	Ext #	Email Address	Hours
Town Administrator	100	townadmin@rowe-ma.gov	Mon-Thurs 9am-4pm
Admin Assistant	101	adminasst@rowe-ma.gov	Mon-Thurs 9am-4pm
Town Accountant	102	accountant@rowe-ma.gov	By Appointment Only
Town Clerk	103	townclerk@rowe-ma.gov	Wed - 5pm-7pm, & by Appt
Board of Assessors	104	assessor@rowe-ma.gov	Wed-Thurs 8am-1pm
Board of Health	105	boh@rowe-ma.gov	Tues-Thurs 8am-1pm
Treasurer	106	treasurer@rowe-ma.gov	Mon, Wed, Thurs 9am-4pm
Tax Collector	106	collector@rowe-ma.gov	Mon, Wed, Thurs 9am-4pm
Town Nurse	107	nurse@rowe-ma.gov	Mon, Wed, Thurs 8am-4pm
DPW	111	dpwhighway@rowe-ma.gov	Monday – Friday 6:30a-2:30p
Fitness Center	149		Mon, Wed 9am-11am/4pm-6pm

Emergency Services

Position/Dept.	Ext #	Email Address	Hours
Fire Chief	112	firechief@rowe-ma.gov	Thursday's 2pm-8pm
EMD	112	firechief@rowe-ma.gov	Thursday's 2pm-8pm
Police Chief	113	policechief@rowe-ma.gov	by Appointment Only
Public Safety Adm	115	publicsafetyadmin@rowe-ma.gov	M&W 3pm-9pm; Fri 7:30-3:30

Town Library (413) 339-4761
rowelibrary@gmail.com

Transfer Station (413) 339-0216
boh@rowe-ma.gov

Days	Hours
Tuesday	10am-5pm
Wednesday	12pm-8pm
Thursday	3pm-7pm
Saturday	10am-3pm

Days	Hours
Wednesday	7am-10am & 4pm-7pm
Saturday	8am-2pm
Sunday	8am-Noon

Elementary School (413) 512-5100

Name/Position	Ext. #	Email
Principal, Jon Friedman	1	jfriedman@roweschool.org
Secretary, Laurie Laffond	2	llaffond@roweschool.org
Nurse, Lydia Brisson	3	lbrisson@roweschool.org

The Rowe Goal Post
P.O. Box 462
Rowe, Massachusetts 01367

The Rowe Goal Post

Available on the Town's website (<https://rowe-ma.gov/p/64/Rowe-Goal-Post>)
the first of every month with paper copies sent out by mail the first week

Published by the Board of Selectmen 'in the interest of information
exchange between all departments and all Rowe citizens.'

All submissions for the next issue are due by the 25th.
Any articles received after this time cannot be guaranteed that
they will appear in the next issue.

Please e-mail all items to:
GoalPostEditor@gmail.com

Please send only high resolution images (do not resize).

If you have a question about your subscription or want to make a change to the mailing list,
please contact the Town Administrator at:
(413) 339-5520 x100
admin@rowe-ma.gov

Seasonal residents MUST notify the Administrator of any change in address.