



Volume 44

Issue 10

Established 1975

*THE*  
*Rowe Goal Post*  
October 2025



*photo by Joanne Semanie*

**Assessor's News**  
Submitted by Christine Bailey

**Recent Property Transfers (September 2025)**

Further details may be obtained by researching the specific deeds at the Franklin County Registry of Deeds website at [masslandrecords.com/franklin](http://masslandrecords.com/franklin)

**UNITARIAN UNIVERSALIST ROWE CAMP & CONFERENCE CENTER, INC.**, of Rowe MA, for consideration of \$300,000.00, grant to **CUSACK, EVAN** of Olympia, WA, property located at 10 Kings Highway (The Fromson Parcel) and 0 Kings Highway (The Royal Smith Parcel) (Map 204 Lots 020 & 021) (Bk 8527 Pg 263)

**Help Wanted!**

The Town of Rowe is seeking 2-3 volunteers to meet regularly and help develop the bylaws for our new fire district. We would like to start this work as soon as possible, with the goal of having the district operational by next summer. If you are interested in participating, please call the Town Hall at 413-339-5520, extension 101. Thank you for considering joining this important initiative

**School Committee Vacancy**

The School Committee is seeking a volunteer to serve as a member from November through May. If you are interested or would like more information please reach out to Susie Zavotka or Matt Stine. The next regular meeting is scheduled for Oct. 9th.  
We would like to thank Beth Balawick for her contributions and dedication to public education during her time as a member and wish her the best.

• • • • •  
• Lissa Quinn is requesting help in cheering up Dick who is in a rehab facility. Cards  
• would be greatly appreciated. Mail to Richard Quinn B27 #2 Life Care Center of Nasho-  
• ba Valley, 191 Foster St., Littleton MA 01460.  
•

Many thanks. Ellynn Packard

# Board of Health

Submitted by Christine Bailey

## “One man’s junk is another man’s treasure”

The **Board of Health** entered into an agreement with CMRK, Inc., a recycling company out of Northborough, MA. CMRK recycles items such as textiles, books & household items. In October they will be placing a textile bin (see list below) at the Rowe Transfer Station. This change from our old recycle bin is due to Rowe and area communities not having timely pickups, causing overflow of clothes, etc. – with possible infestation.

**CMRK will pay the Town of Rowe \$.07 per pound.** This is great incentive to subsidize the Town’s budget by purging the old!

When you give back with CMRK, you are directly supporting their charitable partners, such as The Big Brother Big Sister Foundation and Children’s Miracle Network Hospitals. From life-saving care to supporting mentorship in the community. Each item you give away can hold tremendous value.

### **The following items can be placed in the bins:**

Clothing (any size, any season)

Decorative pillows

Shoes

Stuffed animals

Blankets, sheets, curtains, tablecloths

Men’s Ties

Backpacks, purses, belts

Sport shoes like ice skates, cleats, etc.







Rowe Town Library News  
Submitted by Molly Lane,  
Library Director

**HOURS:**  
**Tuesday 10-5**  
**Wednesday 12-8**  
**Thursday 3-7**  
**Saturday 10-3**

Fall into a good book at the library this fall.

Upcoming September Events:

Town Mosaic - 1st and 15th @ 6 pm

Kid's Craft - 2nd Thursday of each month at 4pm (This month 9th)

Book Chat - 3rd Thursday of every month @ 5:30pm (This month 16th)

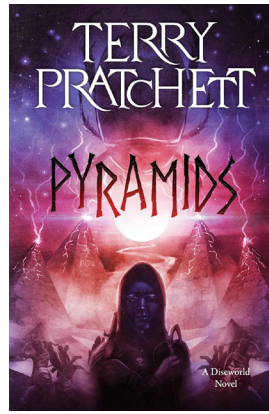
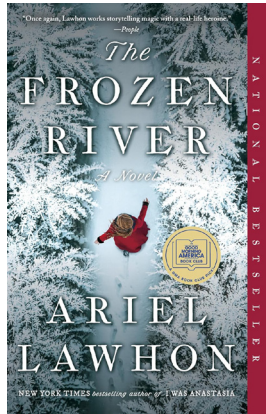
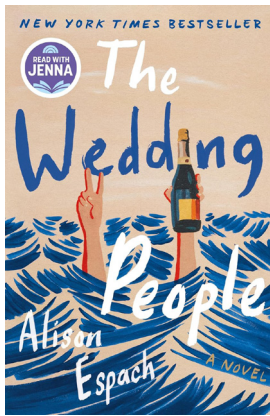
Cyndie Stetson Button Art Cards - 22nd @ 5:30pm

"I'm so glad I live in a world where there are Octobers."  
~ L.M. Montgomery, Anne of Green Gables

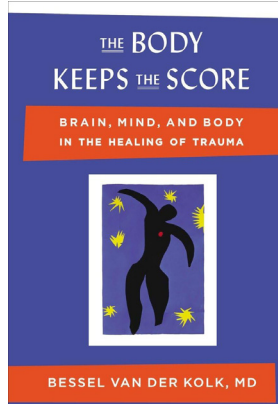
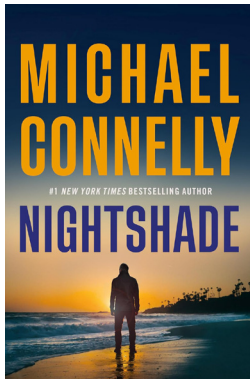


## Some New Books at the Library

### Adult Fiction:



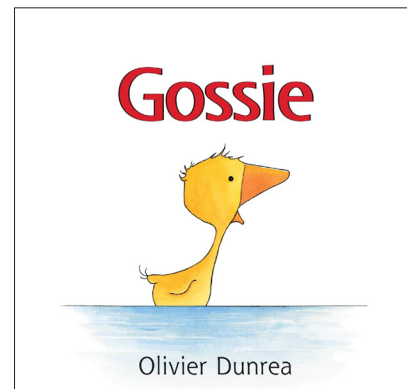
### NonFiction:



### Juvenile Graphic Novel:



### Kids:



# ROWE ELEMENTARY SCHOOL



It has been a busy and exciting month at Rowe School since classes began on August 27th! Students have been reconnecting with friends from last year and making new ones, exploring our library's wonderful collection, enjoying P.E., music, Spanish, and art, and diving into their core subjects: Math, Reading, Writing, Social Studies, and Science, all while building a welcoming classroom community.

Students have been learning and growing in many ways. PreK students are practicing counting, one-to-one correspondence, listening to stories, and drawing. Kindergarteners are exploring math tools, starting literacy, acting out stories, and learning phonemes. First and second graders have begun the Wit & Wisdom ELA curriculum and are learning about the water cycle. Third and fourth graders have been outdoors keeping nature journals, beginning cursive, building reading stamina, strengthening writing skills, and tackling graphs and multiplication. They also participated in a community service project at Pelham Lake Park, digging up lilies to make way for native plants (see attached photos). Fifth graders are studying force and motion while serving as reading buddies for the 1/2 classroom. Sixth graders are stepping into leadership roles through the Rising Phoenix Crew, completing and planning service projects.

All students have enjoyed school-wide gatherings, chorus, a Community Lunch, and weekly art, music, Spanish, and P.E. lessons. Classes spend time every morning building social competence and every other week we come together as a school community to celebrate successes and share ideas for continued growth, ensuring that everyone feels welcome and supported.

October should be busy as well. In addition to the ongoing work in the classrooms, the entire school

will take part in an Exploration Day across the street at Pelham Lake Park. This should be an exciting day for all. Trunk or Treat is scheduled later in the month on Friday, October 24th in the school parking lot (see flyer). Thank you to the PTP for help with the organization.

There will be a Flu and COVID Vaccine Clinic on Tuesday, October 14th from 12-4. This will take place in the Rowe School Gym. There will be Flu vaccines for those ages 5+ and Covid vaccines for those age 12+. Sign-up or inquire with Rachel, the Town Nurse, at (413)339-5520 ext 107 or via email at nurse@rowe-ma.gov. Pre-registration is not required but recommended.

Our After School Activities program, with a group of students hiking with Mrs. P. and Nurse Lydia, will also run through October. More after-school activities are coming later in the Fall. We have volunteer opportunities in the school on a regular basis. If you feel you could commit to regular, weekly volunteer time, just want to help out occasionally, or know someone who can, please let me know.

A reminder, the School Committee will have an anticipated vacancy starting in November. If you or someone you know is interested in being considered for the position, please contact Susie Zavotka, School Committee Chair, prior to the October 9th meeting.

Finally, I am continually inspired by the dedication of our staff and the hard work that takes place each day here at Rowe as we educate our students and prepare them for the future. My hope is that our community sees and feels that same commitment when they visit or connect with us. So whether you'd like to schedule a tour, have a question, or need anything else, please feel free to contact me at the school at 512-5100 or by email a jfriedman@roweschool.org.

**Trunk  
or  
Treat**

Organized by the Rowe PTP

**Friday** **Oct. 24** **Start: 6pm**

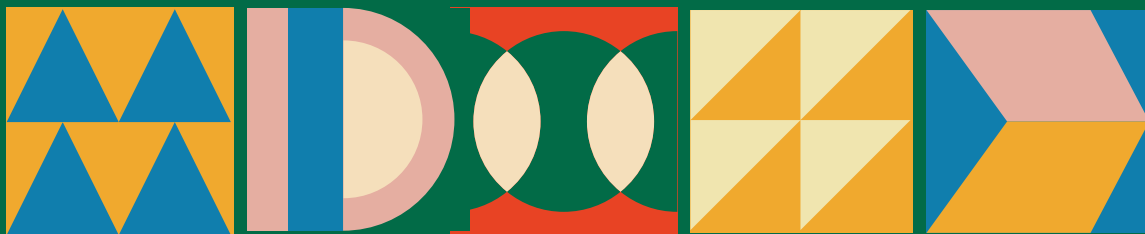
*All are welcome!*

**Trunk set up: 5:30pm**

Rowe Elementary School  
86 Pond Rd. Rowe, MA

Community potluck to follow in the cafeteria. Bring a dish to share!





# Town Mosaic Project

All Rowe residents are invited to add 1 piece or many pieces to the town mosaic EVERY 1<sup>st</sup> and 3<sup>rd</sup> Wednesday of the month from 6-730pm at the Rowe library!  
\*Starting Wednesday, September 3rd\*

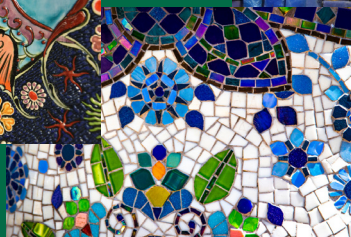
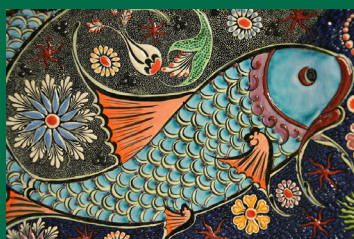


photo by Claudine Poplawski



## **Rowe Cultural Council Seeking Grant Proposals**

**The Rowe Cultural Council is seeking proposals for community-oriented arts, humanities, and science programs. The deadline for organizations, schools, and individuals to apply for grants that support cultural activities in the community is October 16th.**

**These activities can include exhibits, festivals, field trips, performances, workshops or lectures. If you are interested in offering something at one of the town's institutions such as the school, library, council-on-aging, museum etc., you must contact someone in that department for sponsorship before applying for the grant.**

**This year, the Rowe Cultural Council will distribute about \$5,700 in grants. Last year, fourteen grants were funded with awards ranging from \$100 - \$500 each.**

**Grant Application are completed online at [www.massculturalcouncil.org](http://www.massculturalcouncil.org).**

**For more information on applying for a grant or serving on the Rowe Cultural Council, contact Caitlyn Semanie @ [csemanie@hotmail.com](mailto:csemanie@hotmail.com) or Jane Kaufman @ [tojanek@yahoo.com](mailto:tojanek@yahoo.com)**

## ***\*\* Council on Aging heading into Fall \*\****

The COA was pleased to host Henry Dandeneau for a second time this year! This time in our September Third Thursday Coffee morning, Henry enthralled us all with his Turkey talk. Henry gave us more information than we could ever hope for regarding Turkeys and he also delighted us with his Turkey call demonstrations. Thank you, Henry we are so grateful!

### **UPCOMING ACTIVITIES**

**WALKING CLUB:** will run each Monday in October starting Monday, October 6<sup>th</sup> at 10am. The walk will be 1-1.5 hours of moderate intensity so make sure to bring good walking shoes, bug spray and water. MEET AT THE TOWN HALL! No need to sign up- just show up \*\* In the case of inclement weather, the walking club MAY be cancelled. Use your best judgement for your own safety\*\*

**October Third Thursday Coffee Morning:** To be held Thursday, October 16<sup>th</sup> from 10am-12noon. We will be hosting attorney Deirdre Gleason from Western Mass Estate Planning, to walk us through and answer questions about elder law, and estate planning for the future.

**November Third Thursday Coffee Morning:** To be held Thursday, November 20<sup>th</sup> from 10am-12noon. Save the date for our annual wreath making! Pre-register with Donna Butzke in the town hall by Thursday October 30<sup>th</sup>. **Pre-registration required** to ensure we have wreaths made by Carol Lively for everyone! If you have any dried flowers, dried fruit, or other natural decorations to donate, please drop by the town hall prior to event or bring with you on the day!

**SAVE THE DATE AND PRE-REG for the Annual Christmas Luncheon:** To be held on Friday, December 5<sup>th</sup> from 12-2pm at the Rowe Camp and Conference Center. Seniors, pre-registration is REQUIRED with Donna in the town hall by October 30<sup>th</sup> to save your spot!

**ATTENTION ALL SENIORS:** you are invited to participate in the 3<sup>rd</sup> annual Fall-a-palooza coo-koff! This year, we invite you to bake/cook a dish with 1 ingredient being CORN OR APPLES (or both) and drop it off to the stone church next to the library on Sunday, October 26<sup>th</sup> at noon!

**BOWLING-** Bowling has begun again! Each Wednesday from 3-5pm at the Shelburne Falls bowling alley, you can expect to bowl with fellow resident seniors. For now, the cost is FREE! To enquire or get on the mailing list, please contact Stefano at [pickleballstefano23@gmail.com](mailto:pickleballstefano23@gmail.com)

**NEW Coffee and Puzzle Weekly Meet-Up:** Your COA has been hard at work organizing a new drop-in activity. On the 2<sup>nd</sup> floor in the Town Hall, outside the fitness room, you will find a coffee/tea station and a puzzle set up and ready to go for you every Tuesday and Wednesday from 10am-12noon. Starting Tuesday and Wednesday October 7<sup>th</sup> and 8<sup>th</sup>, bring a friend or come alone, but drop in to add a few pieces in the community puzzle while enjoying a brew.



**Memory Café and Caregivers Support Group:** The Shelburne Senior Center is offering two helpful resources for residents who are caring for seniors. The Memory Café is held on the third Friday of each month, (September 19<sup>th</sup>) from 12 to 2, and offers a healthy lunch, a speaker or entertainment, and camaraderie for seniors and their caregivers. Also, the center offers a Caregiver Support Group on the first Monday of the Month, (September 1<sup>st</sup>) at 2 p.m. Both these resources are offered for free, and the center requests that you sign up a day or two ahead of time by calling 625-2502.

submitted by Rachel Lewis

*Turkey talk with Henry Dandeneau*



*Monday Walkers*

## Do I need a Flu Vaccine?



The yearly conundrum many folks ask themselves- ‘Do I really need a flu shot?’

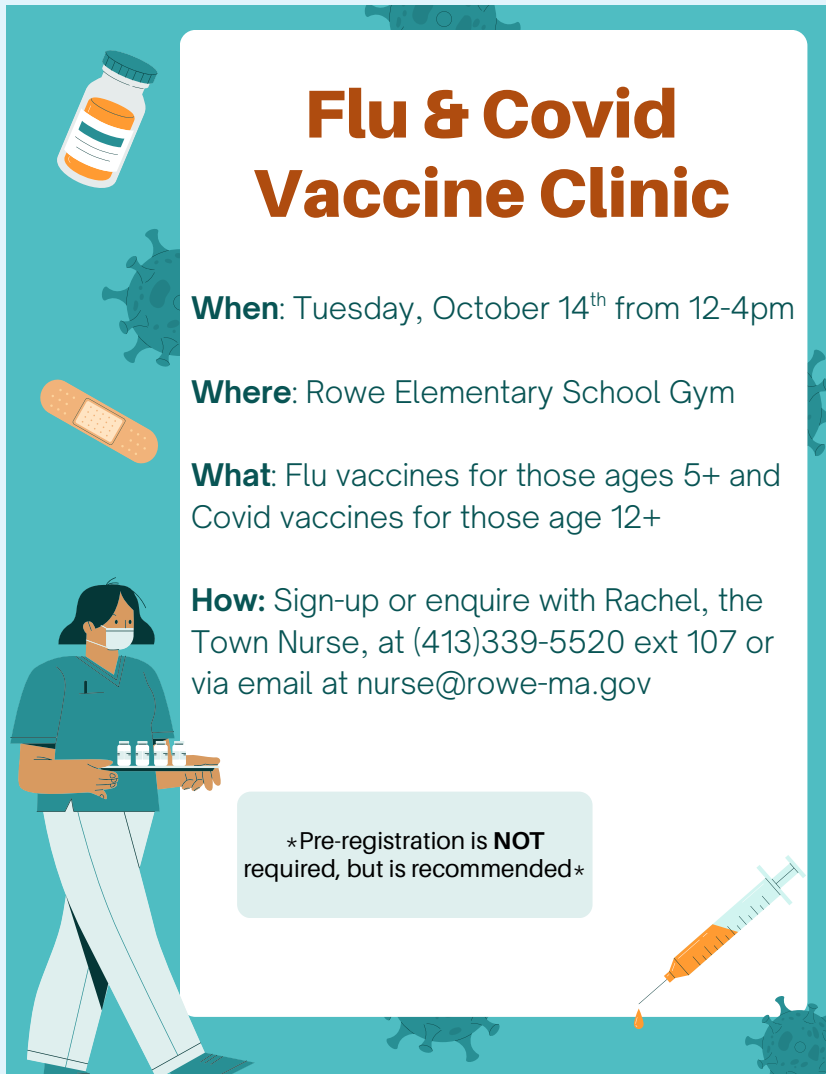
Well...the answer to that question is based upon many contributing factors, but the broad answer for most people is **YES**- you **SHOULD** get a flu vaccine! The CDC recommends everyone over the age of 6 months old receives an annual flu vaccination and here's why:

- ☐ Flu vaccination can keep you from getting sick.
- ☐ Flu vaccination can help reduce the severity of the illness in people who do get sick with the flu.
- ☐ Flu vaccination can reduce the risk of becoming hospitalized with the flu.
- ☐ Flu vaccination is a very important preventative tool for those with chronic conditions such as cardiac conditions, chronic lung disease or diabetes.
- ☐ Flu vaccination during pregnancy can help prevent pregnant people from getting the flu during and after pregnancy and can help prevent infants from getting the flu for the first few months of their lives.
- ☐ Flu vaccine can be lifesaving for children-reducing the risk of severe life-threatening illness by up to 75%.
- ☐ Flu vaccination can help protect those around you who may be more vulnerable to the severe health consequences of the Flu.

Flu vaccinations come with the risk of common side effects, just like many other vaccines. Some common side effects from a flu shot include soreness, redness, and/or swelling where the shot was given, headache, fever, nausea, muscle aches, and fatigue. Very rarely can a serious allergic reaction occur, if they do some symptoms may include breathing problems,

hoarseness or wheezing, hives, paleness, weakness, a fast heartbeat, or dizziness. Most times, people who have these allergic reactions have an allergy to the vaccine ingredient (such as egg-protein). You should contact your doctor if you ever have had an allergic reaction to a vaccination or to a vaccination ingredient previously.

*submitted by Rachel Lewis, Town Nurse*

A poster for a Flu & Covid Vaccine Clinic. The background is teal with illustrations of a vaccine bottle, a bandage, a nurse holding a tray of vials, and a syringe. The text is in white and orange. The title 'Flu & Covid Vaccine Clinic' is in large orange letters. The details 'When', 'Where', 'What', and 'How' are in white. A note about pre-registration is in a white box.

## Flu & Covid Vaccine Clinic

**When:** Tuesday, October 14<sup>th</sup> from 12-4pm

**Where:** Rowe Elementary School Gym

**What:** Flu vaccines for those ages 5+ and Covid vaccines for those age 12+

**How:** Sign-up or enquire with Rachel, the Town Nurse, at (413)339-5520 ext 107 or via email at [nurse@rowe-ma.gov](mailto:nurse@rowe-ma.gov)

\*Pre-registration is **NOT** required, but is recommended\*

**SAVE THE DATE and REGISTER now for the Flu and Covid Vaccine Clinic at the Rowe Elementary School on Tuesday, October 14<sup>th</sup> from 12-4pm.** Flu vaccines for ages 5+ and Covid vaccines for ages 12+ will be offered through the Big Y pharmacy mobile clinic. Although walk-ins are welcome, please pre-register with Rachel, Town Nurse to ensure your spot and get required paperwork ahead of time. Register via phone (413) 339-5520 ext 107, via email at [nurse@rowe-ma.gov](mailto:nurse@rowe-ma.gov) or come in the office during office hours (find office hours on town website or by calling and listening to voicemail).



# PELHAM LAKE PARK NEWS



photo by Claudine Poplawski



Pileated Woodpecker

Photo by Stephen Provost

## Yoga is Still Available in Rowe

Dear Town Folks,

In case some of you are not aware or have forgotten, Kate Peppard is still teaching yoga via Zoom for Rowe and other communities. Class is held every Tuesday morning from 8:30 to 9:30 a.m. Kate moved back to Maine a couple years ago, but has been our long-time yoga teacher for many years prior to that (such fond memories of “yoga at the beach” every summer.)

Here are some benefits of doing yoga via zoom....

1. You don't have to leave the comfort of your own home to drive to a yoga studio (especially hard in the winter.)
2. You are supported in your practice by the others in the class doing yoga with you.
3. I practice by myself but never for an hour; the time in class with others goes by faster.
4. Having the support of a teacher is often beneficial—you can request Kate to focus on certain areas of the body that are bothersome.
5. The cost of \$5.00 a class is well worth the money, as most yoga classes are quite a bit more than that.
6. No one else in the class can hear or see you during the practice.

Please consider joining the group...everyone is welcome, those new to yoga and experienced practitioners. Just email Kate at [highlandstudionyoga@gmail.com](mailto:highlandstudionyoga@gmail.com) and she will put you on her mailing list. There is no obligation to come on a weekly basis, just what works for you.

- Submitted by Karen Soviecke



photo by Claudine Poplawski

## Vitamin Joy!

Rowe Camp and Conference Center has brought so much joy to my life over the years. From my first time attending an adult camp in 1994 to hosting the most recent Labor Day retreat, The Rowe Center has informed me who I am as a human being and citizen of the world. It is a place of love, magic, transformation, and joy. I choose to believe that joy spills over into the surrounding community, the land, the world.

Submitted by Jane Kaufman

---

One of the most important goals in life should be feeling and expressing joy. I propose a column devoted to raising joy in ourselves, our family, town and further. We welcome all stories you would like to share that inspire joy and kindness that you have experienced.

Please submit your stories, ideas, lists, recipes, or memories to: [adminasst@rowe-ma.gov](mailto:adminasst@rowe-ma.gov)

## FALL “CLEAN SWEEP” BULKY WASTE RECYCLING DAY

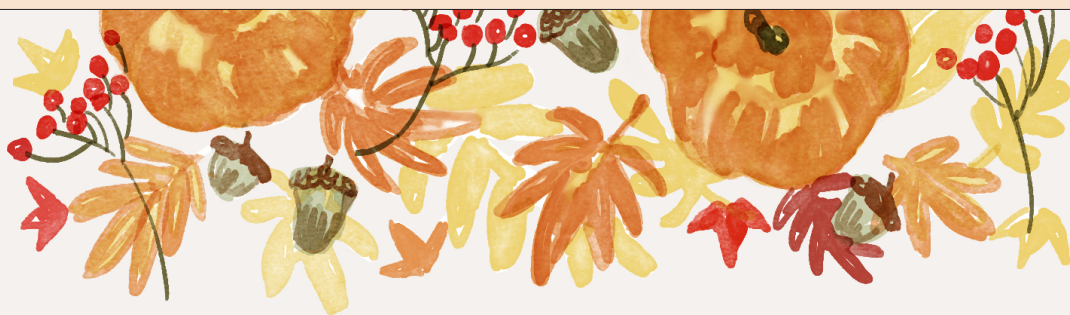
Franklin County Solid Waste Management District is holding the Fall 2025 “Clean Sweep” Bulky Waste Recycling Day on Saturday, October 18 from 9 a.m. to noon. The three collection locations are Erving Highway Garage on Public Works Boulevard (off Rt. 2); Mohawk Trail Regional School at 26 Ashfield Rd. (Route 112 South); and Whately Transfer Station at 73 Christian Lane in Whately.

Residents and businesses from any of the District’s 21 member towns may bring bulky items to this collection. There are charges for most items (cash only). A price list for the most common items is at: [franklincountywastedistrict.org](http://franklincountywastedistrict.org). Pre-registration is not required for Bulky Waste Day.

Acceptable items include tires, appliances, refrigerators, scrap metal, furniture, carpeting, construction debris, computers, televisions, propane gas tanks, textiles, books, bulky rigid plastics for recycling, and other large items. Materials will be recycled whenever possible.

For more information, visit [franklincountywastedistrict.org](http://franklincountywastedistrict.org) or contact the District at [info@franklincountywastedistrict.org](mailto:info@franklincountywastedistrict.org), (413) 772-2438. MA Relay for the hearing impaired: 711 or 1-800-439-2370 (TTY/TDD). The District is an equal opportunity provider.





# ROWE FALLAPALOOZA SOCIAL

FUN FOR THE FAMILY

OCTOBER 26TH, 2025

12:00PM-2:00PM

COOK-OFF, PUMKIN CARVING, SCARECROW CONTEST, LIVE  
MUSIC, GAMES, AND CRAFTS!

COOK OFF: MUST USE CORN OR APPLES

Stone Chapel Across from Town Hall  
& The Rowe Library



Have you finished your scarecrow to be placed on the Rowe Green for the month of October? Let's see how many we can create for the Fall-a-Palooza scarecrow contest!! Please find a spot where we can all see the scarecrows and remember to put your name and telephone number in a plastic bag tied to the back of your scarecrow. There is an adult category and children 12 and under category. Prizes will be awarded at our Fall-a-Palooza October 26th.

*submitted by Cyndie Stetson*



**Spotted  
salamander**

photo by  
Claudine Poplawski

## October Birthdays

- 3 - Faith Travis
- 6 - Daniel Pallotta
- 6 - Otto Boyd
- 7 - Rebecca Boutwell
- 8 - Dave Arney
- 10 - Kirsten Foberg
- 11 - Nancy Plante
- 11 - Lawrence Lesure
- 11 - Wayne Zavotka
- 12 - Addy Loomis
- 13 - Bob Rice
- 15 - Tabitha Hyytinen
- 15 - Courtenay Brines
- 16 - Jasmyne Ostrowski
- 18 - Ken Fensky
- 19 - Arthur Corarito
- 19 - Russ Jolly
- 20 - Peter Columbus
- 20 - Rachel Richardson
- 22 - Roman Kichorowsky
- 23 - Brandon Emerson
- 23 - Darline Upton
- 23 - Edward Silva
- 24 - Mark Duval Jr.
- 28 - Rob Williams
- 28 - Mary Veber
- 28 - Buster Reed
- 28 - Leslie Bauer
- 28 - Susan White

If you would like to add or remove a name from this list, please contact me at: [GoalPostEditor@gmail.com](mailto:GoalPostEditor@gmail.com)

## **Town Departments**

The Town Hall is Open Monday-Thursday 8:00am-4:00pm (413) 339-5520

Position/Dept.	Ext #	Email Address	Hours
Town Administrator	100	<a href="mailto:townadmin@rowe-ma.gov">townadmin@rowe-ma.gov</a>	Mon-Thurs 9am-4pm
Admin Assistant	101	<a href="mailto:adminasst@rowe-ma.gov">adminasst@rowe-ma.gov</a>	Mon-Thurs 9am-4pm
Town Accountant	102	<a href="mailto:accountant@rowe-ma.gov">accountant@rowe-ma.gov</a>	By Appointment Only
Town Clerk	103	<a href="mailto:townclerk@rowe-ma.gov">townclerk@rowe-ma.gov</a>	Fri - 12:30pm-3:00pm, & by Appt
Board of Assessors	104	<a href="mailto:assessor@rowe-ma.gov">assessor@rowe-ma.gov</a>	Wed-Thurs 8am-1pm
Board of Health	105	<a href="mailto:boh@rowe-ma.gov">boh@rowe-ma.gov</a>	Tues-Thurs 8am-1pm
Treasurer	106	<a href="mailto:treasurer@rowe-ma.gov">treasurer@rowe-ma.gov</a>	Mon, Wed, Thurs 9am-4pm
Tax Collector	106	<a href="mailto:collector@rowe-ma.gov">collector@rowe-ma.gov</a>	Mon, Wed, Thurs 9am-4pm
Town Nurse	107	<a href="mailto:nurse@rowe-ma.gov">nurse@rowe-ma.gov</a>	Mon, Wed, Thurs 8am-4pm
DPW	111	<a href="mailto:dpwhighway@rowe-ma.gov">dpwhighway@rowe-ma.gov</a>	Monday – Friday 6:30a-2:30p
Fitness Center	149		Mon, Wed 9am-11am/4pm-6pm

## **Emergency Services**

Position/Dept.	Ext #	Email Address	Hours
Fire Chief	112	<a href="mailto:firechief@rowe-ma.gov">firechief@rowe-ma.gov</a>	Thursday's 2pm-8pm
EMD	112	<a href="mailto:firechief@rowe-ma.gov">firechief@rowe-ma.gov</a>	Thursday's 2pm-8pm
Police Chief	113	<a href="mailto:policechief@rowe-ma.gov">policechief@rowe-ma.gov</a>	by Appointment Only
Public Safety Adm	115	<a href="mailto:publicsafetyadmin@rowe-ma.gov">publicsafetyadmin@rowe-ma.gov</a>	M&W 9-12, 4:30-7:30; Fri 7:30-3:30

**Town Library (413) 339-4761**  
[rowelibrary@gmail.com](mailto:rowelibrary@gmail.com)

**Transfer Station (413) 339-0216**  
[boh@rowe-ma.gov](mailto:boh@rowe-ma.gov)

Days	Hours
Tuesday	10am-5pm
Wednesday	12pm-8pm
Thursday	3pm-7pm
Saturday	10am-3pm

Days	Hours
Wednesday	7am-10am & 4pm-7pm
Saturday	8am-2pm
Sunday	8am-Noon

## **Elementary School (413) 512-5100**

Name/Position	Ext. #	Email
Principal, Bill Knittle	1	<a href="mailto:wknittle@roweschool.org">wknittle@roweschool.org</a>
Secretary, Laurie Laffond	2	<a href="mailto:llaffond@roweschool.org">llaffond@roweschool.org</a>
Nurse, Lydia Brisson	3	<a href="mailto:lbrisson@roweschool.org">lbrisson@roweschool.org</a>



The Rowe Goal Post  
P.O. Box 462  
Rowe, Massachusetts 01367

## **The Rowe Goal Post**

Available on the Town's website (<https://rowe-ma.gov/p/64/Rowe-Goal-Post>)  
the first of every month with paper copies sent out by mail the first week

Published by the Board of Selectmen 'in the interest of information  
exchange between all departments and all Rowe citizens.'

All submissions for the next issue are due by the 25th.  
Any articles received after this time cannot be guaranteed that  
they will appear in the next issue.

Please e-mail all items to:  
[GoalPostEditor@gmail.com](mailto:GoalPostEditor@gmail.com)

Please send only high resolution images (do not resize).

If you have a question about your subscription or want to make a change to the mailing list,  
please contact the Town Administrator at:  
(413) 339-5520 x100  
[admin@rowe-ma.gov](mailto:admin@rowe-ma.gov)

Seasonal residents MUST notify the Administrator of any change in address.