



Volume 44

Issue 9

Established 1975

# *THE Rowe Goal Post*

September 2025



*Young cliff swallow being fed by an adult at the Town Hall*

*photo by Dave Stephenson*

# Assessor's News

Submitted by Christine Bailey

## Recent Property Transfers (August 2025)

Further details may be obtained by researching the specific deeds at the Franklin County Registry of Deeds website at [masslandrecords.com/franklin](http://masslandrecords.com/franklin)

**BOUTWELL, RAYMOND L. & JOYCE A.** of Ana, MO, for consideration of \$87,137.00, grant to **CHURCHILL, ARTHUR D.** of Colrain, MA, property located 7 Potter Road (Map 403 Lot 015) (Bk 8513 Pg 269)

---

## REMINDER - Cyclical / Full Measure & List Inspections

The Board of Assessors has begun the state-mandated **10-yr cyclical reinspection program** of all properties within the community. The purpose of this program is to collect information to update the Assessor's property card database so as to ensure accurate data for the uniform and fair assessment of all properties in Rowe.

### What?

The Department of Revenue (DOR) and Massachusetts General Laws (MGL) require the Board of Assessors to maintain a reinspection program of the properties within the community. The program consists of an inspection of all properties in Rowe every ten (10) years; i.e., Cyclical Reinspection. The inspection consists of measuring the *outside* of the property as well as conducting an *interior* inspection of the property. The property owner does not have to allow an interior inspection; however, refusal of such inspection can result in denial of any assessment appeal or abatement application. As a minimum we ask that the owner respond to questions from the inspector about the interior so as to ensure accurate property card data.

### Why?

The Board of Assessors is responsible to maintain a full and fair market value of all properties in Rowe. This can only be accomplished if the data we have is accurate. The collection and maintenance of current and accurate property inventory data is a critical element in determining uniform, fair market value.

### How and When?

These inspections will be completed on all properties in the town during this summer (2025) and next summer (2026). The plan is to inspect ~120 properties each summer. As with the annual permit inspections, the Assessor's Office will be making phone calls to schedule the inspections. To the extent practicable site visits will be pre-arranged and coordinated with the homeowner.

## Who?

The Board of Assessors has contracted with **Catalis/Patriot Properties** to conduct these inspections. All contracted inspectors will wear an identification card. A member of the Board of Assessors may participate in these inspections.

As always, your cooperation during these inspections is greatly appreciated. Contact the Assessor's Office at 413-339-5520 x-104 with any questions or concerns.



Town Mosaic work has started!

If you are interested in working on the mosaic, either putting on one piece, just so you can say you participated, or work on it ongoing, or anything in between... the mosaic will have regular work on hours at the library. Check out the library or town hall face book and web-site for specific times.



# HAZARDOUS WASTE COLLECTION DAY

**SATURDAY, SEPTEMBER 20, 2025**

**GREENFIELD COMMUNITY COLLEGE & ORANGE TRANSFER STATION**

**REGISTRATION REQUIRED BY SEPTEMBER 10<sup>TH</sup>**

**Register online at: [franklincountywastedistrict.org](http://franklincountywastedistrict.org)**

or fill out the mail-in form below.

Your appointment time and directions will be mailed after registration is processed.

***For residents and businesses of the following towns:***

Athol, Barre\*, Bernardston, Buckland, Charlemont, Colrain, Conway, Deerfield, Erving, Gill, Hawley, Heath, Leverett, Montague, New Salem, Northfield, Orange, Petersham, Phillipston, Rowe, Royalston, Shelburne, Sunderland\*, Warwick, Wendell, Whately.

This collection event is free for residents. *\*Barre and Sunderland residents must pay to participate in 2025.* Space is limited. Greenfield and Leyden residents are not eligible and should call (413) 772-1528 for info on disposal.

For business registration and pricing information, call (413) 772-2438.

**LATEX PAINT IS NOT ACCEPTED AT THIS COLLECTION.**



## WHAT TO BRING

**Any substance labeled: CAUSTIC, TOXIC, CORROSIVE, POISON, FLAMMABLE, WARNING, DANGER, CAUTION**



### FROM YOUR YARD

Flea powder  
Fungicides  
Herbicides  
Insect sprays  
Lighter fluid  
Muriatic acid  
No-Pest strips  
Pesticides  
Pool chemicals  
Rodent killers  
Root killers

### FROM YOUR GARAGE

Antifreeze  
Asphalt sealer  
Brake fluid  
Carburetor cleaner  
Creosote wood sealer  
Engine degreaser  
Gas treatments  
Gasoline, Kerosene  
Radiator flush  
Solvents  
Transmission fluid  
Used motor oil

### FROM YOUR WORKSHOP

Degreasers/solvents  
Lead & oil-based paints  
(*Latex paint not accepted*)  
Paint thinners  
Roofing tar  
Rust inhibitors  
Spray cans (paint/haz.)  
Stains  
Varnish  
Wood preservatives  
Wood strippers

### FROM YOUR HOME

Arts & crafts supplies  
Chemistry kits  
Drain cleaners  
Furniture/metal polish  
Mercury thermometers  
Mercury thermostats  
Mothballs  
Oven cleaners  
Photo chemicals  
Spot remover  
Toilet cleaners  
Upholstery cleaner

## WHAT NOT TO BRING

Fluorescent light bulbs, batteries, mercury-containing items (see reverse for alternate disposal), **latex paint**, empty containers from hazardous products (put empties in trash, not recycling), gas cylinders, radioactive material, explosives (including ammunition & fireworks).

For more information: [franklincountywastedistrict.org](http://franklincountywastedistrict.org), [info@franklincountywastedistrict.org](mailto:info@franklincountywastedistrict.org), (413) 772-2438. *MA Relay for the hearing impaired: 711 or 1-800-439-2370 (TTY/TDD).*

The District is an equal opportunity provider.






## Safe Home—Healthy Home

We are exposed to harmful chemicals in many ways—including products we use to clean our homes or maintain our yards. Only a small portion of the more than 85,000 chemicals registered by the U.S. Environmental Protection Agency (EPA) have been thoroughly tested for human health concerns. Many common chemicals found in our homes can have immediate toxic effects on adults, children, and pets. Others may have long-term health effects after repeated exposure.



We can make our homes safer by adopting minor changes to how we clean our homes or care for our lawns and gardens, and through proper storage, use, and disposal of household chemicals. Consider purchasing nontoxic or low-toxic products. When considering a chemical product, ask yourself if something else you already have will do the job. Common household items such as baking soda, vinegar, and plant-based soaps can often clean just as well as specialty cleaners.



**Mercury-containing items** such as thermometers, thermostats and compact fluorescent lights (CFLs) should never be put in the trash or recycling. These items won't be accepted at the 2025 Hazardous Waste Collection Day. **Thermometers and thermostats** are accepted free of charge at District transfer stations; put in a plastic bag and hand them to the attendant. All types of fluorescent bulbs are accepted at Franklin County transfer stations, including Greenfield transfer station, and Lowe's Stores. Home Depot only accepts CFL bulbs. These items are also accepted at the District's regional hazardous waste "Super Sites." Fees may apply; handle items carefully.

Cell phones and certain **batteries (rechargeable, lithium, Li-ion, button)** should never be placed in trash or recycling, even “dead” or damaged batteries. These batteries can start fires in waste collection trucks or recycling facilities, which can be dangerous for waste workers. Proper disposal of these batteries and cell phones is free at all District transfer stations; hand them to the attendant. Staples stores accept all types of batteries (including alkaline) for free recycling. Residents can bring **vehicle batteries** to auto parts stores and many transfer stations for free recycling, or get paid at scrap metal dealers.

For information about proper disposal of hazardous chemicals, mercury and sharps (needles): franklincountywastedistrict.org, info@franklincountywastedistrict.org, (413) 772-2438. The District is an equal opportunity provider. MA Relay for the hearing impaired: 711 or 1-800-439-2370 (TTY/TDD).

**Hazardous Waste Day Registration - submit by September 10, 2025 (or register online):**

**Please fill out this form completely and mail to:**  
FCSWMD, 117 Main St, Greenfield, MA 01301

Resident name: \_\_\_\_\_

Mailing address: \_\_\_\_\_

Town of residence:

Daytime phone:

Email:

**Specify type and quantity of waste**  
**Ex: 2 gallons gas, 5 lbs. pesticides**  
**Please be specific!**

[illegible]



**Rowe Town Library News**  
Submitted by Molly Lane,  
Library Director

**HOURS:**  
**Tuesday 10-5**  
**Wednesday 12-8 Thursday 3-7**  
**Saturday 10-3**

Fall into a good book at the library this fall.

### Upcoming September Events:

**Kids-**

Afterschool craft program - September 11th @ 4pm

**Adults-**

Individual mosaics with felt Wednesday September 24th @ 5:30 pm

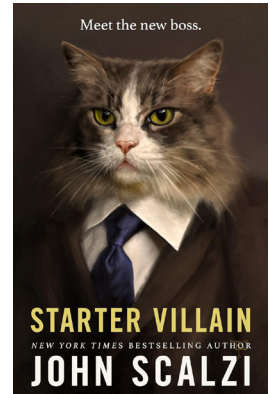
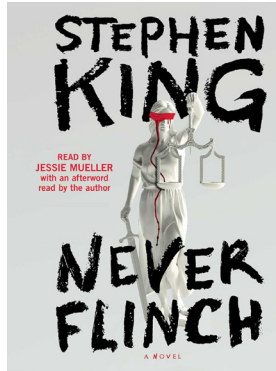
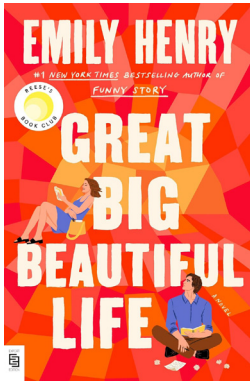
**Everyone Welcome-**

Town Mosaic Time- the 1st and 3rd Wednesday's @ 6pm September , October and November.  
Stop in and add a few or many pieces to our beautiful town mosaic.

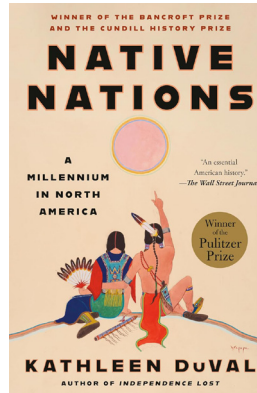
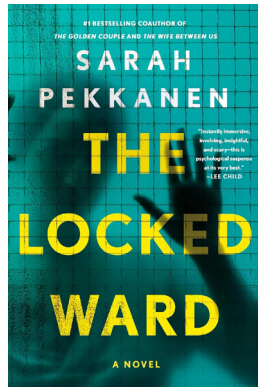
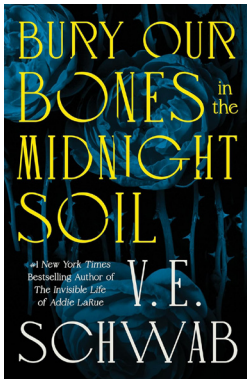


## Some New Books at the Library

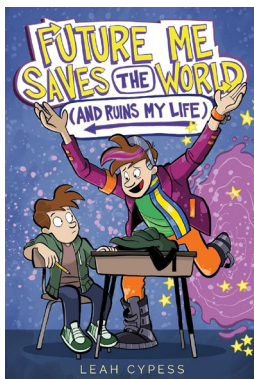
### Adult Fiction:



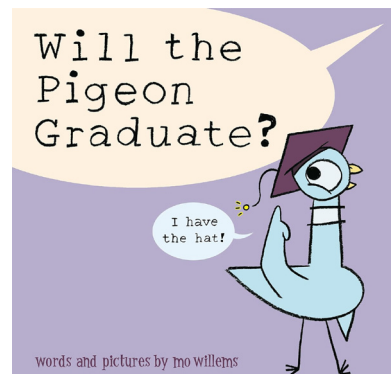
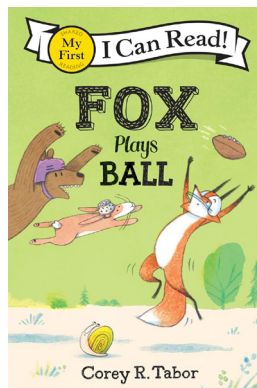
### NonFiction:



### YA:



### Kids:





# ROWE ELEMENTARY SCHOOL



By the time you read this, the new school year at Rowe Elementary will already be underway. Students returned on Wednesday, August 27th, to a building filled with teachers and staff eager to welcome them back.

Children are back on the playground structure, diving into Math again, turning pages in their favorite books, laughing together in the lunchroom and our preschoolers are figuring out where everything belongs in their room. First, third, and fifth graders are busy getting to know their new teachers and while teachers are catching up with familiar faces and learning about the students who are new to their classrooms this year. There is a lot of learning about to happen in these first few weeks on the part of both students and staff.

This is a good time for parents to check in regularly with their children, not just about schoolwork, but about how they're feeling socially and emotionally. It's just as important to stay in touch with your child's teacher by note, phone, email, or in person. Consistent, positive communication between home and school is one of the biggest factors in a student's success, and we'll be working to keep those lines open from our side as well.

As a reminder, school began Wednesday, August 27, with early release at 12:30 p.m. on Wednesday, Thursday, and Friday of the first week. There will be no school on Monday, September 1, for Labor Day, and our first full day will be Tuesday, September 2. Students may arrive as early as 7:45 a.m., when staff supervision begins on the playground and in the cafeteria. The school day starts at 8:25 with the Pledge and morning announcements in the cafeteria; students who arrive after that time will be marked tardy. Dismissal is at 3:20 p.m. this year. After-school activities will begin in late September, look for details coming home soon.

Families should have received the Family Handbook along with medical and registration forms. I do hope you'll take a few minutes to read through it as it has several important bits of information. Please return all forms as soon as possible and if you have questions, call Laurie or our nurse, Lydia Brisson, at 413-512-5100.

For parents driving students to school: please review the drop-off and pick-up procedures in your packet. If you plan to walk into the building, park in a designated area rather than in the traffic circle, which needs to remain open for buses. The circle is intended for quick drop-offs only.

We are also looking for parent and community volunteers. Whether you have an hour or several hours to spare, your help would make a meaningful difference in classrooms, library or out at recess.

This fall will be full of exciting events: hikes, field trips, potluck dinners, movie nights, and more. Community lunches will return on the last Wednesday of each month, starting September 24. Please call by the Tuesday before if you'd like to join us.

We also have some new staff in our building this year. We welcome Brianna Harris as the Preschool Teaching Assistant and Renee Grechel as the Cafeteria Assistant. If you see either of these wonderful individuals, please introduce yourself and welcome them to our community.

If you have any questions or concerns, please don't hesitate to reach out. You can reach me at 413-512-5101 or by email at [jfriedman@roweschool.org](mailto:jfriedman@roweschool.org). I'm looking forward to a wonderful year.

Submitted by Jon Friedman, Principal



### **Lost and Found Alert**

Our bins have reach capacity - about 40 gallons of forgotten summer gear. Mostly towels. So many towels. But also goggles, toys, suits and sandals.

If your family has been wondering where it all went, odds are it's here. Stop in to the lake to check our lost and found. Unclaimed items will be headed for donation at the end of September

# Pelham Lake Park

Submitted by Joanne Semanie

“Adams Mountain and glacial depression, where sand, gravel, silt, and clay collected. The area known to early settlers as the ‘Great Swamp’ is now man-made Pelham Lake.” (1)



*View from Ford Hill Rd.*

Anyone who spends any time in Rowe understands the importance of Pelham Lake as far as recreation is concerned but 100 years ago the dam had been condemned, and the County Commissioners ordered the lake drained. The townspeople tried unsuccessfully to save it. Percy Brown restored this wonderful resource piece by piece and in 1955 the town of Rowe received a deed for 485 acres of land, including parts of Todd, Adams Mountain, Pelham Lake, Mill Pond, and the surrounding area. Percy had restored the dams for Pelham Lake and Mill Pond in 1928.





*Rebuilding Pelham Lake Dam 1927*

The roadway along the lake was much different from the one we see today. No houses and more of a path than a road but the lake still looks familiar.



*Pond Road looking towards the dam.*

When visiting Pelham Lake Park in its current form, look at it from Percy's Point and understand how much one man's love for the wildness of Rowe gave us all something to be thankful for.



*View from Pelham Drive towards the dam.*

(1) From "The History of Rowe, Massachusetts"



Rowe Historical Society Presents:  
Hill Town Ham Hocks  
Old Timey/ Blue Grass/Original Music  
Fiddle/Banjo/Guitar  
featuring our Rowe teacher Hanna French  
Sunday, September 28th 3:00 pm  
Kemp-McCarthy Museum



"This program is funded in part by a grant from the Rowe Cultural Council, a local agent which is supported by Mass Cultural Council, a state agency."





## ***\*\* Council on Aging is wrapping up summer\*\****

The COA collaborated with the Rowe Park staff to hold the second of the two senior picnics on August 21<sup>st</sup>, although this article needed to be submitted before a proper appraisal of the event could take place, the COA is sure the day turned out wonderfully with many seniors enjoying a day out at the lake with delicious BBQ food to fill their bellies. Thank you to the Park staff who grilled, served, and help set up and cleaned up and did a FABULOUS job overall. We look forward to working with Rowe Park next year to bring another round of wonderful senior picnics!

### **UPCOMING ACTIVITIES**

**WALKING CLUB:** will run each Monday in September starting Monday, September 8<sup>th</sup> at 10am. The walk will be 1-1.5 hours of moderate intensity so make sure to bring good walking shoes, bug spray and water. MEET AT THE TOWN HALL! No need to sign up- just show up \*\* In the case of inclement weather, the walking club MAY be cancelled. Use your best judgement for your own safety\*\*

**September Third Thursday Coffee Morning:** To be held Thursday, September 18<sup>th</sup> from 10am-12noon. We will be again hosting our very own Henry Daneneau who will give us a riveting presentation about Turkeys! Henry's Loon talk was so informative and exciting he is back for round 2!

**October Third Thursday Coffee Morning:** To be held Thursday, October 16<sup>th</sup> from 10am-12noon. We will be hosting attorney Deirdre Gleason from Western Mass Estate Planning to walk us through and answer questions about elder law, and estate planning for the future.

**November Third Thursday Coffee Morning:** To be held Thursday, November 20<sup>th</sup> from 10am-12noon. Save the date for our annual wreath making! Sign- up with Donna Butzke in the town hall- pre-registration required. If you have any dried flowers, dried fruit, or other natural decorations to donate, please drop to town hall prior to event or bring with you on the day!

**BOWLING-** Bowling has been paused for the summer season and will resume in the fall- stay tuned!

**Memory Café and Caregivers Support Group:** The Shelburne Senior Center is offering two helpful resources for residents who are caring for seniors. The Memory Café is held on the third Friday of each month, (September 19<sup>th</sup>) from 12 to 2, and offers a healthy lunch, a speaker or entertainment, and camaraderie for seniors and their caregivers. Also, the center offers a Caregiver Support Group on the first Monday of the Month, (September 1<sup>st</sup>) at 2 p.m. Both these resources are offered for free, and the center requests that you sign up a day or two ahead of time by calling 625-2502.

**ATTENTION ALL SENIORS:** you are invited to participate in the 3<sup>rd</sup> annual Fall-a-palooza coo-koff! This year, we invite you to bake/cook a dish with 1 ingredient being CORN OR APPLES (or both) and drop it off to the stone church next to the library on Sunday, October 26<sup>th</sup> at noon!

submitted by Rachel Lewis



Monday walkers at Hoosac Tunnel entrance

**TURKEY TALK**  
*with Henry Dandeneau*

DURING SEPTEMBER'S THIRD  
 THURSDAY COFFEE MORNING AT  
 ROWE TOWN HALL  
 SEPTEMBER 18<sup>TH</sup>, 2025 FROM •  
 10AM-NOON  
 \*REFRESHMENTS SERVED\*

HOSTED BY THE ROWE COUNCIL ON AGING

## Ticks and Mosquitoes!

Tick vigilance is important even after the warmer weather subsides. Ticks can transmit diseases to humans when they bite; the longer a tick remains attached to the skin, the higher the likelihood that it may spread bacteria that cause tick-borne illnesses.

In 2023, over 250 ticks from Franklin County were tested for tick borne illness. Lyme disease was found in ticks from 65% of Franklin County towns. Two other tick-borne illnesses, babesiosis and anaplasmosis, were found in ticks from 25-30% of Franklin County towns.

Although only deer ticks (aka black-legged ticks) can transmit Lyme and anaplasmosis, other ticks should be avoided because they can transmit less common diseases.

Luckily, there are many things we can do to prevent tick-borne diseases:

- ☐ When outdoors, stick to hiking trails, wear light-colored clothing (to see ticks) and tuck in loose ends.
- ☐ Make a habit of checking yourself, your children, and pets for ticks after coming inside. Think like a tick: ticks often hitch a ride after physical contact with brushy plants—start by checking feet, ankles, legs and groin, then work your way upwards.
- ☐ Use tick repellents. DEET can be used on skin. Pre-treat clothing, including socks and shoes, with permethrin (not to be put on skin). Permethrin is invisible, odorless and stays effective in fabric through many washings. Using both repellents together is recommended by the Centers for Disease Control (CDC) and the Department of Defense (DOD).

**Want to identify a tick? Send a photo to Tick Encounter ([tickencounter.org](https://tickencounter.org)), to learn about the tick and your risk level.**

Remember to ALSO be vigilant for mosquitoes! Throughout the summer, mosquitoes are routinely trapped and tested for diseases across the state. The prevalence of mosquitoes carrying disease tends to increase as the summer passes. As of early August, mosquitoes across the state have tested positive for two notable illnesses: West Nile Virus and Eastern equine encephalitis (EEE). In our region, we have had positive mosquito tests for West Nile Virus in a few towns (including Rowe), which has raised our risk level on the state map (<https://www.mass.gov/info-details/massachusetts-arbovirus-update>). There have been no human cases of either disease in our region.

Although only a small percentage of mosquitoes carry disease, the best way to prevent illness is to prevent mosquito bites. Take these steps to avoid bites:



- ❑ Use insect repellents when outdoors. Repellents that contain DEET, permethrin (for clothing, not skin) or picaridin work against mosquitoes. **Always read and follow the label's instructions carefully.**
- ❑ Schedule outdoor activities to avoid the hours from dusk to dawn and wear long sleeves and pants.
- ❑ Repair damaged window and door screens – many hardware stores offer this service.
- ❑ Remove standing water from plant pots, tire swings, kiddie pools, etc. This can disrupt mosquito breeding so you can eliminate future mosquitoes—and their bites!

---

### **SAVE THE DATE**

**Flu and Covid Vaccine Clinic** at the Rowe Elementary School on Tuesday, October 14<sup>th</sup> from 12-4pm

Pre-registration (recommended) and walk-in options available. All folks, please bring picture ID and insurance cards.

You can currently reserve your time slot with Rachel, the Town Nurse, via phone (413- 339-5520 ext 107), email ( [nurse@rowe-ma.gov](mailto:nurse@rowe-ma.gov) ) or stop by the office.

More info to come and *possibly* a link for online reservations



#### **Blacklegged Tick or Deer Tick (*Ixodes scapularis*)**



Larva



Nymph



Adult Male



Adult Female

*submitted by Rachel Lewis, Town Nurse*

# PELHAM LAKE PARK NEWS



photo by Nan Williams

## Thank You to Our Summer Staff

As summer winds down, we want to recognize the incredible crew who kept our park safe, clean, and welcoming these past few months. This year we were fortunate to have 10 assistant park rangers, 3 lifeguards, our recreation director, and a dedicated volunteer on staff. Their hard work and dedication ensured that the beach and picnic area remained a place for families and visitors to relax and enjoy.

Beyond the daily responsibilities, the crew also took on a number of major projects. Highlights include the summer recreation program, swim lessons, two trail reroutes to protect stream banks from erosion, many bridge repairs, and improvements to the Old Growth Habitat Trail. And perhaps the crowning achievement of the summer — the completion of a 26-foot log stringer bridge on the Davis Mine Trail.

We are grateful for all that our staff accomplished this season. Their efforts will benefit the community and the park for years to come.

submitted by Briel Gibson, Park Manager

# **Discover the Night Sky through Lore, Science, and Wonder**

## **Evening Sky Tours in Rowe**

Led by Jon Rehmus of Colrain

Email: [thresholdcrossing7@gmail.com](mailto:thresholdcrossing7@gmail.com); Ph#: 413-624-3025

For more information, contact Briel Gibson, Park Manager

Email: [parkmanager@rowe-ma.gov](mailto:parkmanager@rowe-ma.gov); Ph#: 413-339-5520 x110

**Where in Rowe: Parking at the Highway Garage, event held in Soule fields.**

**When: Friday – Sunday, September 12-14; 7:30 –9:00 p.m.**

For over 30 years, Jon has led groups in tours of the night sky while having taught astronomy and Earth science to students of various ages. The program involves a brief introduction and then laying back on tarps under blankets as Jon shows and explains major features such as planets, stars, constellations, and galactic structures using a laser pointer. Learning both astronomy lore and data, you will be enriched by this treasure – the dome of the sky; a fascinating cosmos – ever around us.

### **What to Bring / In the Event of Cloud Cover**

Jon emphasizes naked-eye observation and learning, though participants are encouraged to bring binoculars if they have them. Those who would like to bring a telescope are welcome to, but this will be the owner's responsibility and should consult with Jon prior to the program. Most important is to dress warmly even if the day was warm. Dress in layers, wear wool socks, and bring hat & gloves. This will allow you to relax and focus on viewing for a prolonged period. Most people stay for 1 ½ - 2 hours.

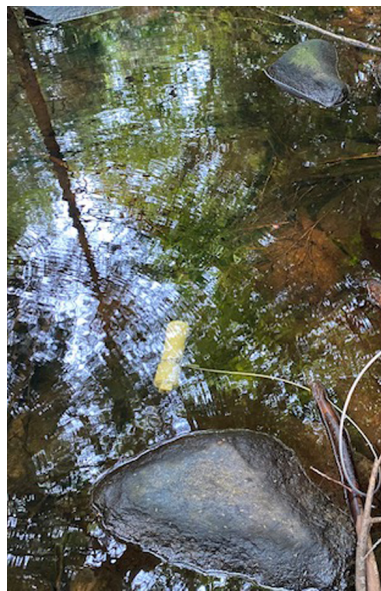
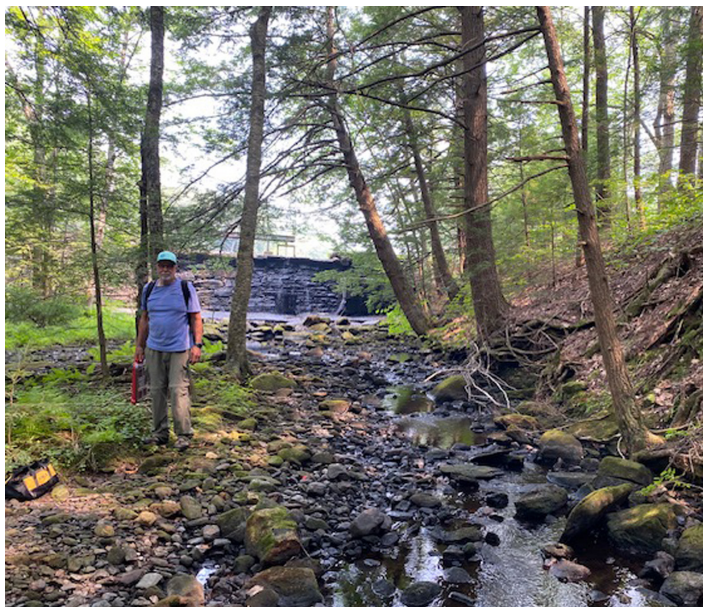
Watch the forecast for clear skies; multiple nights are scheduled because of New England's variable weather. Send Jon an email to get a program reminder or for updates regarding the cloud-cover prediction. Yet Jon also teaches about weather and geology: as long as it isn't raining, Jon will be there! If you have special mobility requirements or other needs, please also contact Briel in advance of this outdoor program; thank you.



## Open Space and Recreation Committee Updates

This summer, Trout Unlimited, in partnership with the Open Space and Recreation Committee (OSRC), installed two monitoring cameras on properties owned by the town. These cameras are part of our joint effort to track the health of Rowe's brooks that feed into the Deerfield River. The cameras are used alongside the sensors, which were installed in the spring and, together, the cameras and sensors monitor flow and water levels, turbidity and other stream-health data. The cameras and monitors are located on Potter Brook, Tuttle Brook and Pelham Brook below the Pelham Lake dam. Each of the cameras have U.S. Geological Survey (USGS) labels and QR codes that show what the cameras are recording. Recent sensor readings on an 81-degree day (high temp) in Rowe showed the water temperatures at Tuttle, Potter and Pelham Brooks were 59°, 65° and 74°, respectively. The monitors and cameras will capture data continuously at each location, providing a record across all seasons.

In August, Laurie Pike informed the OSRC that she was stepping down from her role on the committee. An inaugural member and leader, she led the heavy lifting in establishing the OSRC and creating the Open Space and Recreation Plan that will serve as the committee's blueprint for action in the coming years. The OSRC will greatly miss Laurie's deep knowledge, experience and commitment to stewardship but looks forward to collaborating with her as a continuing member of the Park Commission. Please join us in thanking Laurie for all that she has done to serve our town – her work has helped shape and protect the beauty, accessibility and character of Rowe in ways that will be appreciated for generations. Thank you, Laurie!





# SAVE THE DATE

**SUNDAY OCTOBER  
26TH**

**12-2**

**3rd Annual Fall A  
Pallooza**

- 
- **COOK OFF- 12 NOON**
- **MUSIC**
- **PUMPKIN CARVING**
- **TREATS**
- **GAMES**

**EVERYONE INVITED**



It's time to begin thinking about your creativity for the Rowe **Third Annual Scarecrow contest**. Folks of all ages will arrange their scarecrows on the Rowe green near the gazebo beginning October 1. Please attach your name, address, and telephone number in a small plastic bag to your scarecrow. There will be two categories - Adults and ages under 12. You may put your scarecrow anywhere you wish on the green. Thanks.

*submitted by Cyndie Stetson*



## September Birthdays

- 1 - Ramon Sanchez
- 1 - Tobias Tanner
- 2 - Susan Wood
- 3 - Martha Rossi
- 4 - Robert Clancy
- 5 - Ryan Burke
- 5 - Christopher Tatro
- 6 - Helen Danek
- 6 - Andrew Kuehl
- 9 - Karen Markert
- 9 - David Poehlein
- 9 - Madison Roccio
- 9 - Ryan Shattuck
- 9 - Caitlin Upton
- 11 - Divina Williams
- 12 - Douglas Wilson
- 13 - Thomas Plante
- 14 - Loretta Dionne
- 14 - Karen Soviecke
- 14 - Wendy Sutherland
- 15 - Heidi Cousineau
- 15 - Benjamin Katz
- 15 - Tiffany Reardon
- 16 - Nicholas Baker
- 17 - Scarlett Buchanan
- 19 - Jordan Rice
- 19 - Michael Schreiber
- 19 - Lillian Duval
- 22 - Brian Ash
- 22 - Deborah Katz
- 22 - Lance Larned
- 22 - Jillian Crowningshield
- 22 - Jonathan Tower
- 23 - Robert Avallone
- 25 - Ron Stanford
- 25 - Jocelyn Crowningshield
- 26 - Ron Atwood
- 28 - Debra Crowningshield
- 28 - Ann Grieco
- 29 - Jenna Crowningshield

# SCAM ALERT!



*If you have a  
consumer problem or  
question, contact the*

**Northwestern  
District  
Attorney's  
Consumer  
Protection Unit**

**Greenfield  
(413) 774-3186  
Northampton  
(413) 586-9225**

**Working in cooperation  
with the Office of the  
Massachusetts Attorney  
General.**

*Did you get a message  
saying that you have **unpaid  
toll charges?***

*The message warns that  
your license or registration will  
be cancelled or suspended if  
you don't pay.*

### WHAT TO KNOW

**EZDriveMA does not send  
text messages asking for  
payments for unpaid tolls.**

### WHAT TO DO

**-Stop!** It's a scam!

**-Don't click on the  
link** in the message  
to make a payment.

**-Call EZDriveMA  
at (877) 627-7745**  
to see if you owe  
money for unpaid  
tolls.



## Town Departments

The Town Hall is Open Monday-Thursday 8:00am-4:00pm (413) 339-5520

Position/Dept.	Ext #	Email Address	Hours
Town Administrator	100	<a href="mailto:townadmin@rowe-ma.gov">townadmin@rowe-ma.gov</a>	Mon-Thurs 9am-4pm
Admin Assistant	101	<a href="mailto:adminasst@rowe-ma.gov">adminasst@rowe-ma.gov</a>	Mon-Thurs 9am-4pm
Town Accountant	102	<a href="mailto:accountant@rowe-ma.gov">accountant@rowe-ma.gov</a>	By Appointment Only
Town Clerk	103	<a href="mailto:townclerk@rowe-ma.gov">townclerk@rowe-ma.gov</a>	Fri - 12:30pm-3:00pm, & by Appt
Board of Assessors	104	<a href="mailto:assessor@rowe-ma.gov">assessor@rowe-ma.gov</a>	Wed-Thurs 8am-1pm
Board of Health	105	<a href="mailto:boh@rowe-ma.gov">boh@rowe-ma.gov</a>	Tues-Thurs 8am-1pm
Treasurer	106	<a href="mailto:treasurer@rowe-ma.gov">treasurer@rowe-ma.gov</a>	Mon, Wed, Thurs 9am-4pm
Tax Collector	106	<a href="mailto:collector@rowe-ma.gov">collector@rowe-ma.gov</a>	Mon, Wed, Thurs 9am-4pm
Town Nurse	107	<a href="mailto:nurse@rowe-ma.gov">nurse@rowe-ma.gov</a>	Mon, Wed, Thurs 8am-4pm
DPW	111	<a href="mailto:dpwhighway@rowe-ma.gov">dpwhighway@rowe-ma.gov</a>	Monday – Friday 6:30a-2:30p
Fitness Center	149		Mon, Wed 9am-11am/4pm-6pm

## Emergency Services

Position/Dept.	Ext #	Email Address	Hours
Fire Chief	112	<a href="mailto:firechief@rowe-ma.gov">firechief@rowe-ma.gov</a>	Thursday's 2pm-8pm
EMD	112	<a href="mailto:firechief@rowe-ma.gov">firechief@rowe-ma.gov</a>	Thursday's 2pm-8pm
Police Chief	113	<a href="mailto:policechief@rowe-ma.gov">policechief@rowe-ma.gov</a>	by Appointment Only
Public Safety Adm	115	<a href="mailto:publicsafetyadmin@rowe-ma.gov">publicsafetyadmin@rowe-ma.gov</a>	M&W 9-12, 4:30-7:30; Fri 7:30-3:30

**Town Library (413) 339-4761**  
[rowelibrary@gmail.com](mailto:rowelibrary@gmail.com)

**Transfer Station (413) 339-0216**  
[boh@rowe-ma.gov](mailto:boh@rowe-ma.gov)

Days	Hours
Tuesday	10am-5pm
Wednesday	12pm-8pm
Thursday	3pm-7pm
Saturday	10am-3pm

Days	Hours
Wednesday	7am-10am & 4pm-7pm
Saturday	8am-2pm
Sunday	8am-Noon

## Elementary School (413) 512-5100

Name/Position	Ext. #	Email
Principal, Bill Knittle	1	<a href="mailto:wknittle@roweschool.org">wknittle@roweschool.org</a>
Secretary, Laurie Laffond	2	<a href="mailto:llaffond@roweschool.org">llaffond@roweschool.org</a>
Nurse, Lydia Brisson	3	<a href="mailto:lbrisson@roweschool.org">lbrisson@roweschool.org</a>

The Rowe Goal Post  
P.O. Box 462  
Rowe, Massachusetts 01367

## **The Rowe Goal Post**

Available on the Town's website (<https://rowe-ma.gov/p/64/Rowe-Goal-Post>)  
the first of every month with paper copies sent out by mail the first week

Published by the Board of Selectmen 'in the interest of information  
exchange between all departments and all Rowe citizens.'

All submissions for the next issue are due by the 25th.  
Any articles received after this time cannot be guaranteed that  
they will appear in the next issue.

Please e-mail all items to:  
[GoalPostEditor@gmail.com](mailto:GoalPostEditor@gmail.com)

Please send only high resolution images (do not resize).

If you have a question about your subscription or want to make a change to the mailing list,  
please contact the Town Administrator at:  
(413) 339-5520 x100  
[admin@rowe-ma.gov](mailto:admin@rowe-ma.gov)

Seasonal residents MUST notify the Administrator of any change in address.