



Volume 44

Issue 8

Established 1975

*THE*  
*Rowe Goal Post*  
August 2025



*photo by Stephen Provost*

**Assessor's News**  
Submitted by Rick Williams

**Recent Property Transfers (July 2025)**

Further details may be obtained by researching the specific deeds at the Franklin County Registry of Deeds website at *masslandrecords.com/franklin*

**BJORK, TIMOTHY J.** of Rowe, MA, for consideration of \$1, grant to **ROBINSON, JASMINE M.** of Rowe, MA, property located at 42 Leshure Road (Map 403 Lot 23) (Deed Bk 8499 Pg 89)

**KIM, SON K. & YONG N.** of Goochland, VA, for consideration of \$9,500, grants to **SARGENT, JOHN H.** (Trustee of John H. Sargent Trust) of Quaker Hill, CT, property located off old Davis Mine Road (Map 408 Lot 15) (Deed Bk 8500 Pg 332)

**HARDISON FAMILY**, for consideration of \$1, grant to **HOUGHTALING, THOMAS** of Rowe, MA, property located off lower Tunnel Road (portions of Map 411 Lots 30 & 33) (Deed Bk 8506 Pg 171)

**HARDISON FAMILY**, for consideration of \$1, grant to **HARDISON, BILLY LANE & LEONDA** of Rowe, MA, property located off lower Tunnel Road (portions of Map 411 Lots 24, 30, 31, 33) (Deed Bk 8506 Pg 180)

**HARDISON, BILLY LANE & LEONDA** of Rowe, MA, for consideration of \$310,000, grant to **FRANKLIN LAND TRUST, INC** of Shelburne Falls, MA, property located off lower Tunnel Road (portions of Map 411 Lots 24, 30, 31, 33) (Deed Bk 8506 Pg 187)

**HARDISON FAMILY**, for consideration of \$1, grant to **HARDISON, LEVIN** of Readsboro, VT (and **HARDISON, BILLY LANE & LEONDA** of Rowe MA), property located at 22 Tunnel Road (portions of Map 411 Lots 24, 25, 32, 33) (Deed Bk 8506 Pg 191)

**Survey Plans Recorded:**

**FRANKLIN LAND TRUST** of Shelburne Falls, MA, land located off lower Tunnel Road (Map 411 Lots 24, 25, 26, 30, 31, 32, 33) (Plan Bk 156 Pg 42)

**Town of Rowe**  
**Highway Department**  
**Heavy Equipment Operator/Laborer**

The Town of Rowe, with approximately 37 road miles, is seeking qualified applicants to fill the open heavy equipment operator/laborer position. Responsibilities include, but are not limited to, maintenance and repair of roads and drainage systems; use of hand tools and power tools; performing general labor tasks such as tree and brush removal; snow and ice removal; and operating heavy equipment. Applicants must possess a valid Class B (CDL) driver's license and a 2A Hoister's license. Pre-employment drug testing is required. 40 hours per week, overtime required in the winter. Starting wage \$27.32 - \$31.28, depending on experience. Interested candidates should send their resume to the Town Administrator at [townadmin@rowe-ma.gov](mailto:townadmin@rowe-ma.gov). A full job description and an application can be found on the Town of Rowe website <https://rowe-ma.gov/> and are available at the Town Hall, located at 321 Zoar Road. For more information, please contact the Town Administrator at (413) 339-5520 x100.

**From the Planning Board**

Submitted by Matt Stine

The Planning Board is seeking a volunteer to fill a single vacancy in the board's membership. Over the past year the planning board has been involved in updating zoning bylaws to comply with new state laws and more routinely process lot divisions but the group also acts as the Special Permit Granting Authority for the town in the event an individual or business is looking to engage in construction or land use not allowed by-right. This year the board is looking forward to reviewing and updating the "Goals for Rowe" last updated in 1996 and can be found on the town's website under the Planning Board page.

If you are interested in helping with the Planning Board please reach out to [planningboard@rowe-ma.gov](mailto:planningboard@rowe-ma.gov). Our next meeting is tentatively scheduled for the end of August.

## ***\*\* Council on Aging is Swimming Through Summer \*\****

The COA collaborated with the Rowe Park staff to hold the first of two senior picnics on July 24<sup>th</sup>, although this article needed to be submitted before a proper appraisal of the event could take place, the COA is sure the day turned out wonderfully with many seniors enjoying a day out at the lake with delicious BBQ food to fill their bellies. Thank you to the Park staff who grilled, served, and help set up and cleaned up. There will be a second senior picnic at the Pelham Lake Park on **Thursday August 21<sup>st</sup> from 11-1**- we hope to see you there! The COA would also like to thank ALL the bakers who helped pitch in and bring their baking delights to the first ever cake picnic during the Summer Social on July 13<sup>th</sup>. What an exquisite and scrumptious spread. Seniors were also able to pre-book a free meal from 'Cliff's Backyard BBQ' at the Summer Social and many took advantage of this exciting offer. The consensus was that it was delicious!

### **UPCOMING ACTIVITIES**

**WALKING CLUB:** will run each Monday in August starting Monday, August 4<sup>th</sup> at 10am. The walk will be 1-1.5 hours of moderate intensity so make sure to bring good walking shoes, bug spray and water. MEET AT THE TOWN HALL! No need to sign up- just show up \*\* In the case of inclement weather, the walking club MAY be cancelled. Use your best judgement for your own safety\*\*

**BOWLING-** Bowling has been paused for the summer season and will resume in the fall

**Lifepath Grant:** The Council on Aging recently received a \$3,000 grant from Lifepath, a Greenfield-based non-profit that provides services for the aging and their families. This grant funded the purchase of a new smart tv for the fitness center, which will enable us to host online workshops and movies, along with a beach wheelchair for Pelham Lake Park, which will enable those with physical limitations to get into the water.

**Memory Café and Caregivers Support Group:** The Shelburne Senior Center is offering two helpful resources for residents who are caring for seniors. The Memory Café is held on the third Friday of each month, (August 15<sup>th</sup>) from 12 to 2, and offers a healthy lunch, a speaker or entertainment, and camaraderie for seniors and their caregivers. Also, the center offers a Caregiver Support Group on the first Monday of the Month, (August 4<sup>th</sup>) at 2 p.m. Both these resources are offered for free, and the center requests that you sign up a day or two ahead of time by calling 625-2502.

**SAVE THE DATE!** the second and final summer picnic hosted by Rowe Park and COA is on **August 21<sup>st</sup> from 11am-1pm**- there will be a BBQ with desserts at the Pelham Lake Park gazebo. Please save the date and come join us for lunch, social, and beautiful views!

submitted by Rachel Lewis



Monday Morning Walks





## Rowe Town Library News

Submitted by Molly Lane,  
Library Director

### HOURS:

**Tuesday 10-5**

**Wednesday 12-8 Thursday 3-7**

**Saturday 10-3**

### Cool Off at the Library This August!

Looking for a break from the summer heat? Stop by the Rowe Town Library! Enjoy our refreshing air conditioning, cozy reading spots, and a great selection of books, magazines, and movies. We've got fun programs for all ages happening all month long— craft days, book clubs, and more. Come for the cool air, stay for the community!

### Upcoming Summer Events:

-- 8th Summer Reading Craft - Wildflower Craft - Wednesday, August 6th @ 4pm

--Come help with the Town Mosaic! Saturday, August 9th @ 10:30am, Wednesday, August 13th @6pm, and Wednesday, August 20th @ 6pm

--Summer Reading Wrap-up Party and Raffle! Come have some fun, eat some good food and win some great prizes! Wednesday, August 13th @ 4pm

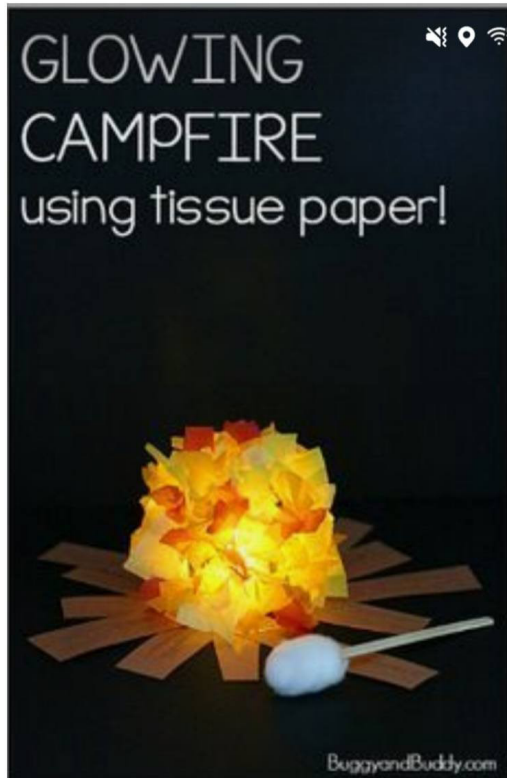
--Monthly Book Chat is the Third Thursday of the month, on August 21st @ 5:30pm

(This month is "Garden of Small Beginnings" by Abbi Waxman)



**Join us for the 7<sup>th</sup> Summer Reading Craft!  
We will be making your very own Glowing  
Campfire!**

**This will take place on Wednesday,  
August 30<sup>th</sup> @ 4pm**



# ROWE ELEMENTARY SCHOOL



Dear Rowe Community,

I'd like to take a moment to introduce myself to those I haven't yet had the pleasure of meeting. Since 2019, I've had the joy of serving as the School Counselor at Rowe, working closely with our incredible students. During that time, I've witnessed the kindness, creativity, and resilience that make this such a special place.

Now, I am honored to expand my role as both Principal and Counselor, bringing a unique perspective rooted in relationship-building, student well-being, and academic growth.

As I begin this new chapter, I want to share my deep commitment to approaching this role with curiosity, care, and respect for the Rowe community. With a Master's degree in Social Work and over 30 years of experience in education, mental health, and student support, I believe in fostering a school environment where every child feels safe, valued, and inspired to grow.

My leadership will continue to prioritize:

- A nurturing, inclusive school culture
- Strong family and community partnerships
- High expectations for student achievement
- Open and transparent communication

Rowe is already a school full of heart, history, and purpose. As I step into this role, I do so as a listener, eager to learn what makes this place meaningful to you and your family. Over the coming weeks, I'll be immersing myself in Rowe's culture, strengths, and dreams. I believe strong schools are built on strong relationships, and I am committed to earning your trust, listening to your perspectives, and building upon the strong foundation laid by my predecessor.

Whether you've been part of the Rowe community for years or are just joining us, thank you for trusting us with your children. I look forward to connecting—whether at drop-off, in the halls, at community events, or through informal conversations before and during the school year.

## **A Few Updates**

As we pass the midpoint of summer, it's hard to believe that in just under a month—Wednesday, August 27—our halls will once again be filled with the joyful sounds of children talking, laughing, playing, and learning.

Though summer brings a slower pace, things have been anything but quiet at Rowe! Jim has been hard at work cleaning and preparing the building. Laurie has been busy in the office, fielding calls and processing orders. Teachers have been in to organize and prep their classrooms. And I've been meeting with service providers, families, and community members to explore how we can strengthen connections and improve communication.

## **Outdoor Classroom**

Work has also been done in the Outdoor Classroom, clearing trees that fell during a spring storm. The 3rd/4th grade class will continue transforming this space into a vibrant, hands-on learning environment. Other classes will also make use of outdoor areas near the school and at Pelham Lake Park, helping students connect with nature while they learn and play.

## **Curriculum News**

We will continue using Illustrative Mathematics for the third year, which has greatly supported student engagement and success in math. We are transitioning to a new ELA curriculum, Wit and Wisdom (grades K–6), and also Appleseeds (grades K–2) to build foundational reading skills. Many of our teachers have already participated in professional development over the summer to prepare for these changes.

## **After-School Enrichment**

We're excited to continue our after-school enrichment program. Last year, students explored activities ranging from art and hiking to board games and crafting. If you—or someone you know—has a passion or skill you'd like to share, we'd love to hear from you! We're looking for volunteers to lead once-a-week sessions for 6–8 weeks on a topic of your choice.

## **Community Events**

Monthly Community Lunches will return on the last Wednesday of each month, please join us! The PTP is planning an Ice Cream Social on Monday, August 25 at 2:00 PM at the school—mark your calendar!

## **Let's Stay Connected**

I'll be working throughout the year to keep you informed and involved. If you have ideas for how to bring the community more into the life of the school or anything else you'd like to share, please don't hesitate to reach out either by phone (413-512-5101) or email ([jfriedman@roweschool.org](mailto:jfriedman@roweschool.org)) I'd truly love to hear from you.

*submitted by E. Jon Friedman*

# Busy Scenes from the Center of Rowe

Submitted by Joanne Semanie

I am in possession of a small scrapbook/photo album that was a gift from a lodger at Fort Pelham Farm from about 1920.

The following pictures were taken during a two weeks vacation at Fort Pelham Farm and were collected together in appreciation of the good time and many favors shown the Taker.

The photos are of what might be considered the mundane (some of the captions would lead you to believe that Rowe was not the most exciting place).



GENERAL STORE



POSTOFFICE



The Village Smithy

It seems that walking Middletown Hill was either thrilling or exhausting but numerous photos were taken.



Looking up from the bottom of the hill with a sign for Fort Pelham Farm on the far right. It seems the Wrights wanted to make sure they were found for their boarders as well as those going for a chicken dinner.

**Fort Pelham Farm, Rowe, Mass.**

---

*Chicken dinners served any day if notified in advance - \$1.50*

Elevation 1600 feet. Good Scenery. Good Air

Week-end Parties a Specialty

Telephone Charlemont 24-6

Write for Terms                      HENRY D. WRIGHT



Both sides of the road made it into this little book with descriptions of past and present uses.



#### THE OLD TOWN ROAD

This road discontinued for many years now forms a beautiful vista west of the house. Lined on both sides by old maples there is a well defined avenue for several rods, but it is lost at the foot of the hill in fast growing brush.

The insert shows the road up the hill with the sign at the right indicating the way.

Hikes were taken around the property with buildings recorded. I am grateful to have this as these barns are no longer there.



*Looking south through the back yard of Fort Pelham Farm towards Maple House (Mike & Becky Bradley).*

" A horse, a horse, my kingdom for a horse."

This is Napoleon, present property of Mr. Wright and the same horse that Cromwell, or was it Sherman that offered his kingdom for.

His white color is symbolic of his pure mind and its freedom from conflict.



Wanting to add a little humor to the book as well as a pleasant memory of a summer stay Napoleon made an appearance.

## 2<sup>nd</sup> Annual Rowe Summer Social

The 2<sup>nd</sup> annual Rowe Summer Social was held on Sunday July 13<sup>th</sup> at the park. There were many events of the day including an early morning hike, a well-attended Pickleball Tournament, Cake Picnic, Bar-beque lunch, Historical Society interactive exhibits, red cross booth, Matt York concert, a face painter and a booth displaying the town mosaic.

Lunch coupons were given to town seniors, complement to the Council on Aging which also organized the cake picnic and drinks. Thanks to the Park Commission and manager for all their help. Thanks to the Library for the face painter and all their games and Molly helping at the food booth. Thanks to the Red Cross for making an appearance and such a great informative display. Thanks to the Historical Society for bringing all their displays to the park. Thanks to the volunteers at the gate and thanks to the planning committee for organizing and running the event. (See you October for 18<sup>th</sup> for our 4<sup>th</sup> Annual Fall A Palooza event!)

Hope those that attended enjoyed the day! See you next year...





*photos by Donna Butzke*

## **Mosquitoes and the Risks They Pose**

Here is a crazy statistic-There are over 150 species of Mosquitoes in North America and over 3000 species in the entire world! Most adult mosquitoes spend the day in damp, shady areas where they can find protection from the sun. They need water to lay their eggs in and plants to hide in, so they are usually found around water and plants. Mosquito eggs are laid on water or damp soil where the young mosquitoes grow and develop. When they become adults, they leave the water and fly away. The life of an adult mosquito is quite short- most female mosquitoes live for less than 2 weeks and most male mosquitoes live for less than a week, but depending on conditions, they can live up to 8 weeks. Female mosquitoes are the only ones that bite because they use the blood to make their eggs. Some mosquitoes carry viruses that are transmitted with a bite, which can make people and some animals sick. In Massachusetts, the diseases linked to mosquitoes are West Nile virus (WNV) and eastern equine encephalitis (EEE) virus. Both viruses can be deadly and if survived can leave lasting neurologic disability due to the inflammation of the brain that they cause. For more info on these viruses please visit: <https://www.mass.gov/info-details/mosquito-borne-disease-prevention>

Throughout the summer, mosquitoes are routinely trapped and tested for diseases across the state. The prevalence of mosquitoes carrying disease tends to increase as the summer passes. By mid-July of this year, mosquitoes in Eastern and central Mass have tested positive for West Nile Virus (WNV). Human infection from mosquitoes does not usually occur until end of July/beginning of August. Public health officials continually watch for trends/data relating to mosquito activity and the diseases they carry. Follow this link to check out the risk map of mosquito activity in Massachusetts. <https://www.mass.gov/info-details/massachusetts-arbovirus-update>

The good news is that WNV and EEE are rare and only a small number of mosquitoes are infected at any given time, so being bitten by a mosquito does not mean you will get sick. However, the best way to avoid EEE and WNV is to PREVENT mosquito bites.

### **Prevention tips:**

- ☐ Use insect repellents any time you are outdoors
- ☐ Wear long-sleeved clothing

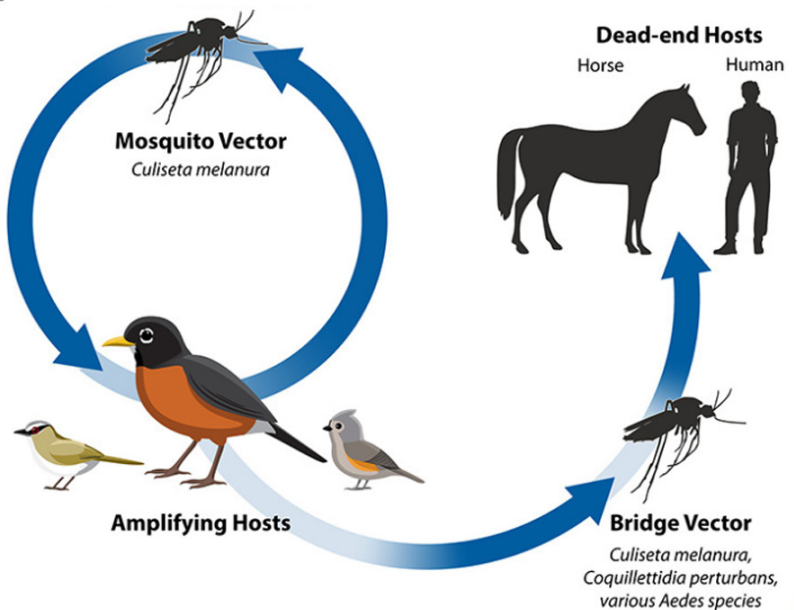
- ❑ Schedule outdoor activities to avoid the hours from dusk to dawn during peak mosquito season
- ❑ Repair damaged window and door screens
- ❑ Remove standing water from the areas around your home (such as tires, containers, tarps, etc.)

**Also remember to keep doing your daily tick checks!**

## Eastern Equine Encephalitis Transmission

The Eastern equine encephalitis virus **cycles between mosquitoes and birds**. The *Culiseta melanura* mosquito, which primarily bites birds, is responsible for spreading the virus among birds. The virus then multiplies in the birds' bloodstream.

People and other animals, like horses, become infected with the virus when mosquito species that feed on many kinds of animals, feed on infected birds and then bite people. People and horses are considered **dead-end hosts** because unlike birds, they don't develop high levels of virus in their bloodstream and cannot pass the virus on to other biting mosquitoes.



References: <https://www.mass.gov/mosquito-borne-diseases>

submitted by Rachel Lewis, Town Nurse

## PELHAM LAKE PARK NEWS



photo by Nan Williams

The Rowe Park Commission would like to extend our sincere thanks to everyone who helped make this year's Summer Social a success. We are especially grateful to the many volunteers and our summer staff who assisted with planning, set-up, parking, clean-up and more. Your efforts made the day run smoothly and helped create a warm, welcoming atmosphere. And to all who attended, thank you for showing up and making the event a true celebration of community.

We're also pleased to announce the addition of a beach wheelchair to assist individuals with limited mobility in accessing the waterfront. The chair is available upon request and was made possible by the COA. Be on the lookout for our new ADA-compliant picnic tables, which will provide additional inclusive seating options in the park.

As a reminder, residents must provide their guests with a guest pass to utilize the picnic area and beach. Guest passes are valid for one vehicle. If you're expecting multiple out-of-town guests, please consider making a reservation ahead of time. Doing so helps park staff manage space and maintain a safe, enjoyable environment for all visitors. Park passes for residents are available from the parking attendant or at the Town Hall during regular business hours. Thank you for your cooperation and for helping us keep Rowe's Park a well-cared for community space.

submitted by Briel Gibson, Park Manager

# THANK YOU MCC

The Massachusetts Cultural Council has supported the Rowe Historical Society in several ways this season. The following items have been made possible by an **MCC Project & Festival Grant**...

- ✓ Development of our new website  
[www.rowehistory.org](http://www.rowehistory.org)
- ✓ New Display Tables (4) for exhibits
- ✓ New Display Stands (4) for our clothing exhibit
- ✓ New Rowe Historical Society Marketing Brochures
- ✓ Roadside signs for two RHS locations

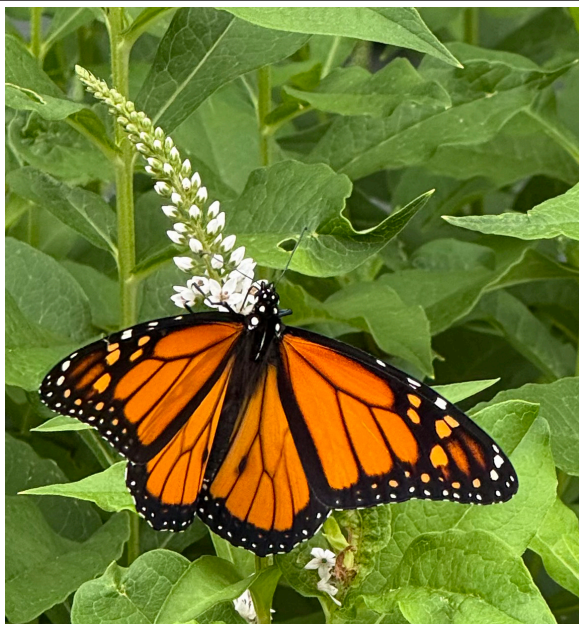


### **It was a Wonderful Day!**

Each month as I read the Goal Post, I look forward to seeing if anyone has submitted words about why they love Rowe. Well, Sunday, July 13 was a surprisingly Wonderful Day! Initially waking up glum and gloomy because the last weather report I heard before going to bed indicated there might be afternoon showers, and our last community program (the yard/craft fair was a very rainy day) I ended the day with a big smile on my face. The Summer Social was a big hit! The weather was perfect, the BBQ was spectacular (and QUIET without the food truck generator sound), and a good deal for the seniors with vouchers! Matt York was back singing his heart out under a tree with his own sound system with folks kept drifting toward the tables nearer to him and singing along. The desserts at the Cake Picnic were spectacular with our home bakers gifting the attendees with their favorite recipes. The Mosaic project had people working on it, and family groups were fully utilizing the park beach and playground and having their faces painted, or hanging out with their friends. (I didn't know that the pickle ball players were actually in competition!) Did the park get new aluminum picnic tables? It was surprising to see so many tables in "the grove." I hope that people wandered over to the Rowe Historical Museum's table, bought a book or two and are enticed to visit the museum when it's open this summer. Lot's of folks (who I won't mention, because I am notorious at being forgetful and will leave someone out!), and groups came together to make the event just wonderful....including funding from the Rowe Cultural Council (which is funded entirely by the Mass Cultural Council), the Council on Aging, and all the other neighbors who come together to bring about the connectivity of our town.

It Was a Wonderful Day!

*submitted by Susan Tomlinson*



Summer pollinators



photos by Claudine Poplawski

## Rowe Town Mosaic

The Community designed mosaic is now available to be worked on! The glass tile is in, nippers to cut are here and we will be offering times this summer at the library to come and work on the project. This will be open for teens through adults with no experience necessary. Check out the library website and the town website for dates and times.... Thank you for all that submitted design ideas, we used as many as possible and hope you enjoy the design as much as we do!!! It is apparent that Nature rules in Rowe...

Hope you make time for this fun project,

The Rowe Mosaic team



photo by Claudine Poplawski

The Rowe Beautification Committee sends out a huge thank you to those folks who graciously displayed their fabulous gardens on the July 12th Rowe garden tour. We understand how much work goes into our lovely gardens and we appreciate your efforts supporting this event. Also, a huge thank you to those who attended the tour. I'm sure everyone had a wonderful time seeing the incredible flower and vegetable gardens as well as some of the amazing views of the proprietors.

And again, we encourage anyone who has a bit of time to spare, to join us on the committee or give us a couple hours once in a while to help weed, water, or deadhead flower gardens. Thank you.



photo by Joanne Semanie

## August Birthdays

- 1 - Henry Dandeneau
- 2 - Doris Fensky
- 4 - Nicole Denouden
- 3 - Virginia Gary
- 6 - Lenny Laffond
- 6 - Raymond Boutwell
- 7 - Frank Wheeler
- 8 - Ellynn Packard
- 8 - Brianna Vega
- 13 - Elizabeth Palmer
- 13 - Richard Hamilton
- 13 - Linda Avery
- 14 - Robin Booth
- 14 - Rebecca Angstadt
- 18 - Robert Boyd
- 20 - Jay Williams
- 22 - Andrea Crowningshield
- 23 - Christine Bailey
- 24 - Presley Veber
- 24 - Daniel Wessman
- 25 - James Sousa
- 27 - Kyle Shippee
- 27 - Rebecca Katz
- 30 - Herbert Butzke
- 31 - Jeanette Crowningshield

If you would like to add or remove a name from this list, please contact me at: [GoalPostEditor@gmail.com](mailto:GoalPostEditor@gmail.com)

## Town Departments

The Town Hall is Open Monday-Thursday 8:00am-4:00pm (413) 339-5520

Position/Dept.	Ext #	Email Address	Hours
Town Administrator	100	<a href="mailto:townadmin@rowe-ma.gov">townadmin@rowe-ma.gov</a>	Mon-Thurs 9am-4pm
Admin Assistant	101	<a href="mailto:adminasst@rowe-ma.gov">adminasst@rowe-ma.gov</a>	Mon-Thurs 9am-4pm
Town Accountant	102	<a href="mailto:accountant@rowe-ma.gov">accountant@rowe-ma.gov</a>	By Appointment Only
Town Clerk	103	<a href="mailto:townclerk@rowe-ma.gov">townclerk@rowe-ma.gov</a>	Fri - 12:30pm-3:00pm, & by Appt
Board of Assessors	104	<a href="mailto:assessor@rowe-ma.gov">assessor@rowe-ma.gov</a>	Wed-Thurs 8am-1pm
Board of Health	105	<a href="mailto:boh@rowe-ma.gov">boh@rowe-ma.gov</a>	Tues-Thurs 8am-1pm
Treasurer	106	<a href="mailto:treasurer@rowe-ma.gov">treasurer@rowe-ma.gov</a>	Mon, Wed, Thurs 9am-4pm
Tax Collector	106	<a href="mailto:collector@rowe-ma.gov">collector@rowe-ma.gov</a>	Mon, Wed, Thurs 9am-4pm
Town Nurse	107	<a href="mailto:nurse@rowe-ma.gov">nurse@rowe-ma.gov</a>	Mon, Wed, Thurs 8am-4pm
DPW	111	<a href="mailto:dpwhighway@rowe-ma.gov">dpwhighway@rowe-ma.gov</a>	Monday – Friday 6:30a-2:30p
Fitness Center	149		Mon, Wed 9am-11am/4pm-6pm

## Emergency Services

Position/Dept.	Ext #	Email Address	Hours
Fire Chief	112	<a href="mailto:firechief@rowe-ma.gov">firechief@rowe-ma.gov</a>	Thursday's 2pm-8pm
EMD	112	<a href="mailto:firechief@rowe-ma.gov">firechief@rowe-ma.gov</a>	Thursday's 2pm-8pm
Police Chief	113	<a href="mailto:policechief@rowe-ma.gov">policechief@rowe-ma.gov</a>	by Appointment Only
Public Safety Adm	115	<a href="mailto:publicsafetyadmin@rowe-ma.gov">publicsafetyadmin@rowe-ma.gov</a>	M&W 9-12, 4:30-7:30; Fri 7:30-3:30

**Town Library (413) 339-4761**  
[rowelibrary@gmail.com](mailto:rowelibrary@gmail.com)

**Transfer Station (413) 339-0216**  
[boh@rowe-ma.gov](mailto:boh@rowe-ma.gov)

Days	Hours
Tuesday	10am-5pm
Wednesday	12pm-8pm
Thursday	3pm-7pm
Saturday	10am-3pm

Days	Hours
Wednesday	7am-10am & 4pm-7pm
Saturday	8am-2pm
Sunday	8am-Noon

## Elementary School (413) 512-5100

Name/Position	Ext. #	Email
Principal, Bill Knittle	1	<a href="mailto:wknittle@roweschool.org">wknittle@roweschool.org</a>
Secretary, Laurie Laffond	2	<a href="mailto:llaffond@roweschool.org">llaffond@roweschool.org</a>
Nurse, Lydia Brisson	3	<a href="mailto:lbrisson@roweschool.org">lbrisson@roweschool.org</a>

The Rowe Goal Post  
P.O. Box 462  
Rowe, Massachusetts 01367

PRSRT STD  
ECRWSS  
U.S. POSTAGE  
**PAID**  
EDDM Retail

LOCAL POSTAL  
CUSTOMER

## **The Rowe Goal Post**

Available on the Town's website (<https://rowe-ma.gov/p/64/Rowe-Goal-Post>)  
the first of every month with paper copies sent out by mail the first week

Published by the Board of Selectmen 'in the interest of information  
exchange between all departments and all Rowe citizens.'

All submissions for the next issue are due by the 25th.  
Any articles received after this time cannot be guaranteed that  
they will appear in the next issue.

Please e-mail all items to:  
[GoalPostEditor@gmail.com](mailto:GoalPostEditor@gmail.com)

Please send only high resolution images (do not resize).

If you have a question about your subscription or want to make a change to the mailing list,  
please contact the Town Administrator at:

(413) 339-5520 x100  
[admin@rowe-ma.gov](mailto:admin@rowe-ma.gov)

Seasonal residents **MUST** notify the Administrator of any change in address.