



Volume 42

Issue 3

Established 1975

THE Rowe Goal Post

March 2023



photo by Meredith Sokol

Town Clerk

Submitted by Paul McLatchy III

Office hours continue to be on Wednesday evenings from 6:00-8:00 and by appointment.

As I officially moved from Rowe last month, I tendered my resignation to the Board of Selectmen on February 12th. At that same meeting, they voted to appoint me as town clerk until the May election- permissible under state law (when appointing a town clerk, they do not have to be a registered voter). I thank the Board for their support and look forward to helping in the transition to the next town clerk.

Nomination papers are still available- this is the last month you can obtain them. To qualify for the ballot, you will need to first contact me to obtain a set of papers. You will need to have twenty (20) registered voters sign the nomination papers and return them to either myself or a registrar by March 25th. The following list includes the offices up for election and the people who have taken nomination papers as of February 22nd. Each term is for three years unless noted otherwise. No one has taken out papers for Constable or either seat on the Planning Board- this could be your opportunity to run!

Board of Assessors	Frederick Williams*+
Board of Health (3 Years)	Daniel Poplawski*
Board of Health (2 Years)	Kathleen Atwood
Board of Selectmen	Joanne Semanie*
Cemetery Commission	Joanne Semanie*+
Constable	<u>None</u>
Finance Committee (x2)	Daniel Pallotta*+
	Loretta Dionne*
Finance Committee (1 Year)	Marilyn Wilson*+ (Appt)
Library Trustees (3 Years)	Rebecca Bradley*
Library Trustees (2 Years)	Lauren Werner* (Appt)
Park Commission (3 Years)	Laurie Pike*
Park Commission (2 Years)	Walter Quist* (Appt)

Planning Board (5 Years)	<u>None</u>
Planning Board (3 Years)	<u>None</u>
School Committee	Susan Zavotka*
Town Clerk	Kevin Balawick
	Meg Pallotta

* Incumbent

+ Papers have been submitted with required number of signatures, appears to have qualified for the ballot.

Board of Health

Submitted by Christine Bailey

Now and then, Mother nature rears its ugly head, and we experience severe weather (Nor'easters, frigid temperatures, floods, etc.). Sometimes just staying put is your best measure depending on the severity. Here are some small pointers in case of a significant emergency:

1. Have and follow your emergency plan. <https://www.redcross.org/get-help/how-to-prepare-for-emergencies/make-a-plan.html>
2. Have your emergency kit ready. Ensure you have workable flashlights, stored clean drinking water, and bathtubs filled for toilet flushes. <https://www.redcross.org/get-help/how-to-prepare-for-emergencies/survival-kit-supplies.html>
3. Stock up on a few non-perishables that do not require heating/cooking.
4. Make sure you are safe before assisting others. Do wellness checks on your neighbors regularly.
5. Prepare today! Purchase a battery-powered or hand-crank radio now - to receive information from local officials and follow their instructions. Ensure you have enough oil, propane, wood, or pellets to last through the storm. Deliveries may not be able to make it to your home during or shortly after a storm.
6. Stay put until all is safe or until you receive information from state officials to evacuate.

Again, please remember to do wellness checks on each other, especially the elderly, ensuring all are safe and have heat, food, and water.

From the Town Hall

Submitted by Janice Boudreau

Sports Kudos

I am going to start this month's report with a departure from my normal business news to highlight recent noteworthy accomplishments of a few of Rowe's athletes.

Addie Loomis, daughter of Sean and Leanne, continued her unbeaten streak by winning all 7 Alpine Ski team races for the Mohawk Trail girls ski team. At a recent Pioneer Valley Interscholastic Athletic Conference (PVI-AC) Alpine Skiing Individual Championship Tournament, held at Berkshire East, she won the combined title. She will next compete at the state championship meet taking place at Berkshire East on February 28th. Considering its her freshman year, we will be hearing more about her in the coming years.

Also finishing with a strong second in the tournament was **Weston DenOuden**, son of Nicole DenOuden and Rich Hamilton, has been also doing well as a 10th grader for the Boy's Ski Team. It looks like there will be many years ahead to watch Sister **Naomi DenOuden** who also finished in the top ten.

Wishing Rowe resident **Meg Pallotta**, who will run in the 2023 Tokyo, Japan Marathon adding to her final sixth finish in the renowned Abbott World Marathon Majors Series early in March. She has completed marathons in Boston, London, Berlin, Chicago and New York.

Bridge News

I again asked to have the contract with Mass-DOT for the Small Bridge Grant Program to be amended again since the low bid came in

much higher than was projected by our Gill Engineering. In addition to the original grant of \$500,000.00, the contract was amended in December to add an additional \$90,671.19, awarding a total of \$590,671.19 for the project. I am pleased to learn that they agreed to my request for an additional shortfall of \$52,917.78.

It will be great to have the Ford Hill Project completed, for the most part, in September with a December completion. C. Davenport Trucking was awarded the bid for the project. They will be in Rowe this Summer working on the Tennis Court project as well.



Ice bubbles, Saddle Brook

by Meredith Sokol

Making Vision Boxes





Rowe Town Library News

Submitted by Molly Lane, Library Director

HOURS:

Tuesday 10-5

Wednesday 12-8 Thursday 3-7

Saturday 10-3

Lots of fun going on at the library. Stop by and pick a new book, movie or magazine and say hi to our friendly staff. We are happy to recommend materials for you. We also have coffee and tea to help pass the last days of winter weather. Check out our new programs for this month!

Programs:

Wednesday March 8th@ 6 pm - Nerd Night Game Night- “Magic the Gathering will be played this month. Everyone welcome. Come learn if you don’t know how

Thursday March 9th at 6pm - All invited to our planning group to work on a fun community event! Our meeting lasts about an hour. Nice way to be social and develop community,

Wednesday March 15th at 5:30 pm - Pendant Jewelry Wrapping - Learn different wrapping techniques with wire to wrap your stones and beads. You will leave with a finished piece. Bring your own stones and beads or we will have them to choose from. This program is taught by local jewelry maker C. Fand.

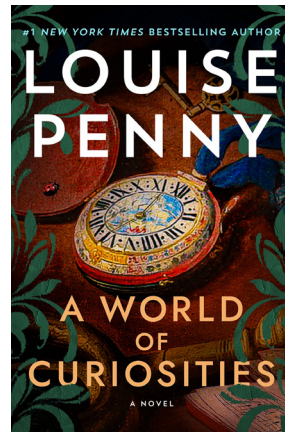
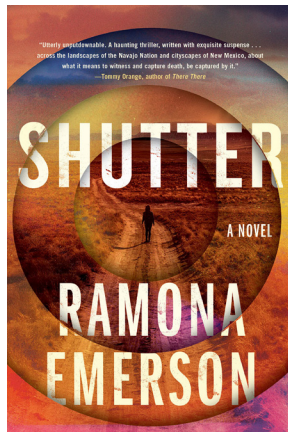
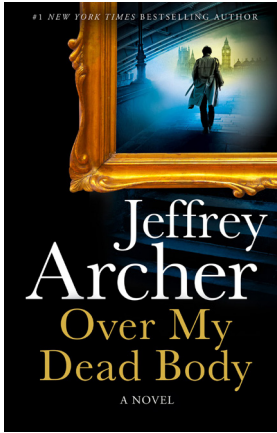
Wednesday March 22nd@ 3:30 pm - Book Chat - “The Arctic Fury”, written by Greer Macallister. “A dozen women join a secret 1850’s expedition- and a sensational murder trial unfolds when some of them don’t come back.”

~

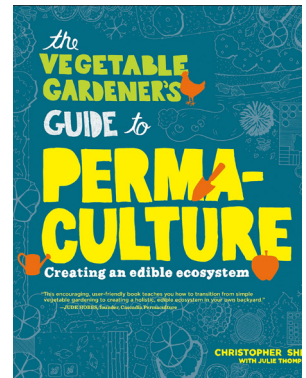
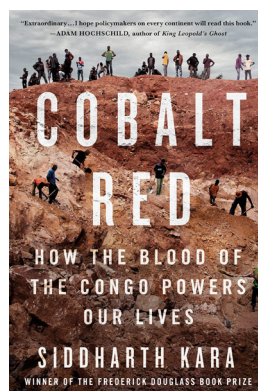
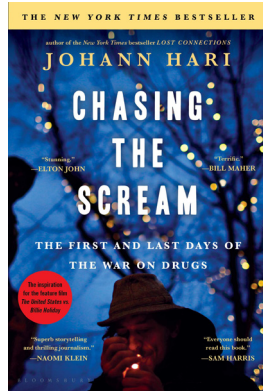
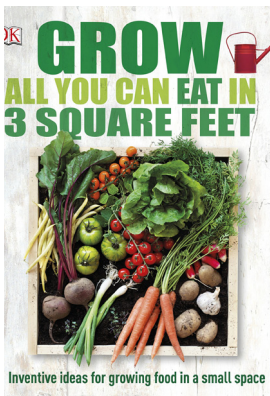
Library Trustee meetings are held @ 10am on the 3rd Wednesday of each month. All town residents are welcome to attend.

Some New Books:

Adult Fiction:



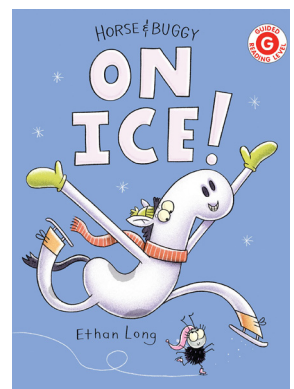
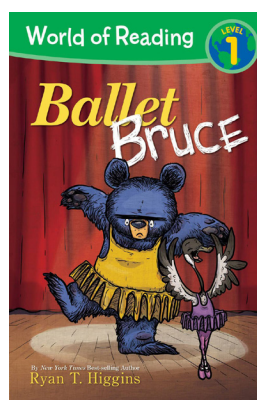
Adult Non-Fiction:



Young Adult:



Kids:



ROWE ELEMENTARY SCHOOL



I was looking back at what I submitted last year for the March Goal Post, and so much has changed, but many things have not. What has changed is that last year, there were many things we weren't able to do: we didn't ski, take field trips, or have visitors in the school. What has also changed is all of the adaptations we made due to the ongoing pandemic that are no longer necessary. These include the masks, the (thankfully no-longer-needed) distancing, the breakfast and lunch plans, as well as delivering more outdoor-based education.

What hasn't changed is that we had snow days each of the last three Februarys as well as this February. What also hasn't changed is the commitment of all of the staff to doing whatever needs to be done to offer every student the best education possible, as well as the cooperation between school staff and families to best support all our students.

As the weather warms up this spring, we will increase the amount of time students spend outdoors, working on ways to combine traditional education with outdoor experiences for an engaging and productive learning experience.

As always, if you have questions or concerns, please call me at 413-512-5200. You can also email me at wknittle@roweschool.org. And please visit our website, www.roweschool.org. I look forward to hearing from you.

-Submitted by Bill Knittle



3/4 KC



5/6 and P3



P1 story time with Molly

Snow Days

Submitted by Joanne Semanie

Snow seems to always be at the forefront in Rowe during our typically long winter season. Beginning very often in mid November, and sometimes running into April, residents historically have had their share of winter gear. The number of different sleds, pairs of skis and photographs in the collection of the Rowe Historical seems to confirm that many residents of town embraced the snowy weather with gusto.



George & Dudley behind the house at Fort Pelham Farm (Semanie)

The collection is contained at the Browning Bench Tool Factory building and includes wooden skis and sleds, including a large double ripper. This particular sled looks long enough to carry 5 or 6 adults and makes you wonder why we don't read stories of people dying or being seriously injured while "playing" in the snow.



Ed Henderson at Leshure Rd. (Butzke)

Snowshoes were also in use and although we don't have a pair in our collection it would appear from photographs that the design changed little in decades. Although we most often use them now for fun and recreation they were probably used just as much for work such as tapping trees for sugar season before the snow began its serious spring melt.





As you enter the Bench Tool building immediately on your right is the collection of skis, sleds and sugaring equipment along with an open sleigh. One can imagine travelling along the roads on a calm winter day with the snow covering everything. The roads had been rolled to give a solid surface for the runners of the sleighs and the horses would be wearing their bells as they trotted along the roadway.

Newell Sleigh

Treat yourself on a visit to the museum, sit in the sleigh and imagine a quick ride through the center of town after a snowstorm bundled up against the cold. Quite possibly stopping at a neighbor's or on your way to an overnight visit with relatives with a warm beverage waiting for your arrival. Seems like the perfect winter interlude to me and might have me wishing for more snow.



View from hill behind the library towards Town Hall and the Gracy House circa 1895

The Bench Tool Factory building is closed during the winter months but will be reopening once the snow has disappeared. If you would like a tour of the museum contact a trustee to arrange a visit. Someone is always available and happy to show you around and it can be a fun thing to do while we still have snow on the ground.



Albert R. "Al" Williams

Rowe, MA - Albert R. "Al" Williams, 66, of Tatro Rd, passed away on December 27, 2022 at Baystate Franklin Medical Center in Greenfield.

Al was born in Montague, MA on February 13, 1956 the son of Roger Williams and Shirley (Streeter) (Williams) Waterhouse. He graduated from Mohawk Trail Regional High School.

Al was employed in the construction business working in many different capacities. Most recently he was a recycling engineer for a company in Pittsfield prior to their closing operations.

He was an accomplished hunter and coon dog breeder and trainer. He had received several awards, trophy's, and best of show competitions over the years. It was his passion to be out in the woods working and training his dogs.

Survivors include his mother Shirley of Shelburne Falls, brother Tom Williams and his wife Mary of Shelburne, sister Donna Williams of Shelburne Falls, brother Dan Williams and his wife Alice of Taiwan, sister Sherry White and husband Larry of Bellows Falls, VT, his aunt Glenda Yagodzinski of Colrain, and several cousins, nieces, nephews and great nieces and nephews. Al was predeceased by his father Roger H. Williams.

From the Greenfield Recorder





Ashley Elizabeth Brown, born on December 22, 1990, of Rowe, MA, passed away surrounded by her family, January 5, 2023. Ashley Brown graduated from Mohawk Trail Regional School, regularly making the honor roll. She completed her Associate's Degree from Greenfield Community College. Ashley loved people. Most of her jobs focused on caring for others. She held managerial positions, and especially enjoyed being an event coordinator, creating special moments in people's lives. Her employers were all local landmarks, including Zoar Outdoor, and the Warfield House.

Ashley had many loves in her life. The most precious person to Ashley, was her daughter Harper Grace. They had a beautiful close relationship and loved each

other dearly. Harper and Ashley enjoyed dancing together, doing art projects, and reading books. Their favorite place to play was on the beach at Pelham Lake. Ashley loved her family and friends. She found a lot of joy in spending time together. Ashley and her brothers, Dustin and Skyler, had a unique bond that was so strong, as adults, they rented several houses together. Ashley had girlfriends who she treasured and treated as sisters. Her generous nature and selflessness is what made her so special to many people. She loved to be outdoors, playing with Harper, fishing, camping and listening to country music. Ashley had a strong love for animals and adopted many. Cookie, one of her favorite dogs who was born on her birthday, became her devoted companion for many years.

Ashley is survived by her daughter, Harper Grace, her father, Craig W. Brown, fiancée, Virginia Gary, and her brothers, Dustin, and Skyler; her mother Nicole, her stepfather Brian Lengle, of Summerville, S.C and siblings; Brian and Brianna. Ashley will be loved and remembered by her huge family and many friends. Ashley is predeceased by her daughter Everleigh Hayden.

Ashley's Celebration of Life will be held in the spring. The date is TBD.

Submitted by Virginia Gary



There may come a day when you might need a little extra help in your home, with your day to day activities or with your health needs. Lifepath is a private, nonprofit corporation that serves Franklin County (as well as other communities in Hampshire, Hampden, Berkshire, and Worcester counties). Lifepath helps people find the best options and services to maintain independence and quality of life in their own homes and communities.

Lifepath offers many services in the Rowe area including: Meals on Wheels, Adult Family Care, Life Alert, Dementia Caregiver's Support Group, Case Management, Personal Care Attendant (if and when available), Farm to Home Food Program, SHINE program (Serving Health Insurance Needs for Everyone), and much more. For more information please visit <https://lifepathma.org/>

Even if YOU are not currently in need of services, your loved ones might be, and this is a great opportunity to arm yourselves with invaluable information that may be helpful in your future or the future of your loved ones.

SAVE THE DATE

~Food, Fun, Prizes & Knowledge~

Please join us on Thursday, March 23rd from 1-2:30pm at the Rowe Town Hall for an informational seminar regarding Lifepath services! Tea, coffee, chili, soup, and breads will be provided.

*****BONUS*****

All attendees will be entered into a raffle drawing for a gift card to a local shop (There will be 2 chances to win)!

"Before finding Life Path, my family and I were struggling to navigate my father's care. I feel like Life Path gave me part of my life back."

Submitted by the Town Nurse

Recycling Matters!

How recycling benefits everyone in Massachusetts



Recycling saves money.

We throw away 1.5 million tons of paper every year. If we recycled half of this paper, we would save nearly \$52 million in disposal costs.



Recycling means jobs.

19,000 people are employed at 1,400 recycling businesses and organizations in Massachusetts. These businesses have an annual payroll of \$557 million and produce \$3.5 billion in sales receipts.



Recycling reduces greenhouse gases.

Recycling helps Massachusetts residents reduce the equivalent of 2 million metric tons of carbon dioxide annually. That's like taking 1.6 million passenger cars off the road for a year.



Recycling conserves energy.

Recycling in Massachusetts saved over 85 trillion BTUs of energy last year, enough to power 820,292 homes for one year.

Recycling saves resources.

Massachusetts recycled enough paper last year to prevent the cutting of nearly 17 million trees.

Brought to you by MassDEP

The Massachusetts Department of Environmental Protection



Learn more:
www.mass.gov/dep

Sources: U.S. Recycling Economic Information Study, R.W. Beck, 2001, MassDEP 2006 Solid Waste Master

Does it really get recycled?

Where do my recyclables go after pick-up?

- Massachusetts has seven processing facilities that sort and bale over 500,000 tons of recyclables each year. After processing, your recyclables are ready to enter the "recycling marketplace."

Who uses recyclables after they're sorted?

- Recyclables are valuable commodities in today's global economy. About half of the bottles, cans, and paper collected in Massachusetts are sold to manufacturing plants in the Northeast; the other half goes to markets in China, India, and Brazil.

What is made out of all that stuff?

- Paper and cardboard are turned into cereal and cracker boxes, book covers, and game boards at recycling paper mills in Fitchburg and Haverhill.
- Glass bottles and jars are melted and used to make new containers at facilities such as St. Gobain Containers in Milford.
- Plastic soda bottles become polyester fiberfill for jackets and sleeping bags, or polar fleece made by Malden Mills in Lawrence.
- Milk jugs, detergent bottles, and other #2 plastics become landscaping timbers and whiskey barrel planters made by Smartware Products in Leominster.

A Little Effort *Does* Make a Big Difference

Recycling - It conserves resources, supports local businesses, and saves YOU money.

To learn how to recycle in your community visit: www.earth911.org

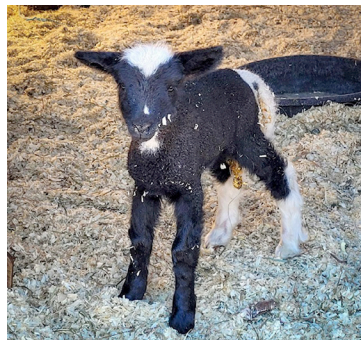


In the early morning of January, 29th Mike and Becky Bradley looked out of their windows to see this. Their barn, over 100 years old, burned to the ground before dawn with daylight giving them their first vision of a changed life.

They lost a ram, ewe and lamb. The loss of life to a farmer is the ultimate pain – you take on the welfare of that animal and understand that you are entrusted with their safety. This stings and the Bradleys are no different than anyone that has taken on the responsibility of raising animals. Two pregnant ewes survived. All day they spent taking stock of the situation – basically in shock that so much they have worked for and

with for the past 35 years was gone. The priority was the remaining sheep. Friends called with options for shelter for the remaining animals but in the end, they wanted to keep them home. Neighbors brought in hay and a tarp to cover it outdoors, they brought them a bucket for water for the sheep, and a metal can for their feed which was still in the trunk of their car from pick up the day before. They arrived to tighten up the small building knowing the weather was going to be much colder by the end of the week.

This is when they began to realize everything they had lost. Their barn was their only storage building. They lost their tractor and snowblower, tools and implements, everything that makes taking care of a farm and property possible. They lost all of their lawn furniture for the guests of Maple House B&B. They lost all of their hobbies from mosaics to skis to golf clubs to a canoe. They lost their ladders, chainsaw, and lawnmower. Most of their flower beds were lost as well. To date \$22,000 has been raised to help rebuild and replace what was lost.



a new lamb from one of the escaped ewes

***We will be forever grateful to our Hilltown community and family and friends spread around the world. We are truly humbled. Our hearts are broken open because of you. Thank you all.
Becky & Mike Bradley***

Sunset over Pelham Lake



photo by Steve Provost



The Rowe Center

WORKSHOPS • RETREATS • SUMMER CAMPS

The Rowe Center is pleased to offer residents and those who work for the town the opportunity to experience one of our weekend workshops, either online or on-site, once a year free of charge. For more information about programs. or to register, please go to our website rowe.center/programs/ or call our registrar at 339-4954.

SCAM ALERT!



People you meet online aren't always who they say they are.

SIGNS OF A SCAM

- They profess love quickly.
- They ask for money to pay for an emergency or offer investment opportunities.
- They ask you to buy gift cards, transfer money, or invest in cryptocurrency.
- They claim to live or do business far away so that you can't meet in person.

WHAT TO DO

Never send money or gifts to anyone you haven't met in person—even if they send you money first.

Only scammers tell you to buy gift cards, wire money, or by cryptocurrency.

Once you send it, you won't get your money back.

If you have a consumer problem or question, contact the

Northwestern District Attorney's Consumer Protection Unit

Greenfield
(413) 774-3186
Northampton
(413) 586-9225

Working in cooperation with the Office of the MA Attorney General



Barred Owl - Brittingham Hill Rd.



photo by Kristin Johnson

Rowe Community Church

Submitted by Ros Mullette

- | | | |
|-------|----|--|
| March | 5 | Observance of Lord's Supper & Praise Service |
| | 12 | Praise & Worship Service |
| | 19 | Praise & worship Service |
| | 26 | Praise & Worship Service |

As we look ahead, note that the first Sunday in April will be Palm Sunday

March Birthdays

- 1 - Kathleen Atwood
- 4 - Samara Buchanan
- 5 - Barbara Long
- 7 - Jody Brown
- 8 - Daniel Burke
- 13 - Ron Gordon
- 14 - Heidi Kuhl
- 15 - Kathy Sprague
- 16 - Brianne Cousineau
- 16 - Cynthia Stetson
- 17 - Jillian York
- 18 - Dana Williams
- 19 - Grace Poplawski
- 20 - Bill Travis
- 23 - Kristah Boutwell-Swope
- 23 - David Scrivens
- 26 - Mary Paige
- 27 - Mary Reardon
- 27 - Nathan Paige
- 28 - Marilyn Wilson
- 29 - Lauren Werner
- 29 - Susan Zavotka
- 30 - Fred Lowell
- 31 - Ian Boyd

If you would like to add or remove a name from this list, please contact me at:

GoalPostEditor@gmail.com

Town Services

Town Main Line at 413-339-5520

<u>Position/Dept.</u>	<u>Ext #</u>	<u>Email Address</u>	<u>Hours</u>
<u>Admin Assistant</u>	<u>101</u>		
<u>Assessors Office</u>	<u>104</u>	<u>assessor@rowe-ma.gov</u>	<u>Wed 8-1 or by Appt</u>
<u>Board of Health</u>	<u>105</u>	<u>boh@rowe-ma.gov</u>	<u>Tues 8-1 Clerk</u>
<u>DPW</u>	<u>111</u>	<u>dwphighway@rowe-ma.gov (339-5588)</u>	
<u>Executive Secretary</u>	<u>100</u>	<u>townadmin@rowe-ma.gov</u>	<u>Mon-Thurs 9:30-5:00</u>
<u>Fire Dept</u>	<u>112</u>	<u>firechief@rowe-ma.gov (339-4001)</u>	
<u>Fitness Room</u>	<u>149</u>		
<u>Library</u>	<u>114</u>	<u>rowelibrary@gmail.com</u>	<u>Tues: 10-5 Wed: 12-8 Thu: 3-7 Sat: 10-3</u>
<u>Park</u>	<u>110</u>	<u>parkmanager@rowe-ma.gov (339-8554)</u>	
<u>Police</u>	<u>113</u>	<u>policechief@rowe-ma.gov (339-8340)</u>	
<u>Post Office</u>	<u>(413) 339-5390</u>	<u>Mon-Fri: 12:15-4:15, Sat: 8:30-11:30</u>	
<u>Tax Collector</u>	<u>106</u>	<u>collector@rowe-ma.gov</u>	<u>Mon-Wed: 9:00-5:00</u>
<u>Town Accountant</u>	<u>102</u>	<u>accountant@rowe-ma.gov</u>	<u>By Appt.</u>
<u>Town Clerk</u>	<u>103</u>	<u>townclerk@rowe-ma.gov</u>	<u>Wed: 6-8:00pm or by Appt.</u>
<u>Town Nurse</u>	<u>107</u>	<u>nurse@rowe-ma.gov</u>	<u>Mon: 8-4, Wed: 10-6, and Thurs: 8-4</u>
<u>Transfer Station</u>	<u>(413) 339-0216</u>	<u>Sat: 8- 2:00pm, Sun: 8- Noon, Wed: 7 -10am & 4 - 7pm</u>	
<u>Treasurer</u>	<u>108</u>	<u>treasurer@rowe-ma.gov</u>	<u>By Appt.</u>
<u>School</u>	<u>(413) 512-5100</u>		

Town Hall is open for normal business hours 9:30 a.m. to 5:00 p.m. Monday-Thursday

Please contact Executive Secretary at: (413)339-5520 ext. 100 for appointments whenever possible.

Seasonal resident MUST notify the Executive Secretary of any change in address.

The Rowe Goal Post
P.O. Box 462
Rowe, Massachusetts 01367

The Rowe Goal Post

Available on the Town's website (<https://rowe-ma.gov/p/64/Rowe-Goal-Post>)
the first of every month with paper copies sent out by mail the first week

Published by the Board of Selectmen 'in the interest of information
exchange between all departments and all Rowe citizens.'

All submissions for the next issue are due by the 25th.
Any articles received after this time cannot be guaranteed that
they will appear in the next issue.

Please e-mail all items to:
GoalPostEditor@gmail.com

Please send only high resolution images (do not resize).

If you have a question about your subscription or want to make a change to the mailing list,
please contact the Town Administrator at:
(413) 339-5520 x100
admin@rowe-ma.gov

Seasonal residents MUST notify the Administrator of any change in address.