



Volume 41

Issue 12

Established 1975

# *THE Rowe Goal Post*

December 2022



photo by Claudine Poplawski

## **From the Town Hall**

Submitted by Janice Boudreau

### **MAIL DELIVERY ISSUE:**

People have made us aware that there have been some issues with mail delivery, including receiving the Goal Post. I have had some conversation with the Postmaster in Charlemont, where our mail originates, and there has been a new mail delivery person who took over from Ed from Heath who retired. It is the hope that this will be resolved once the new person is fully trained.

### **MIIA GRANT:**

I recently applied and received notice of approval for a \$4,000 grant for the Refuse Gardens from our town insurance agency, Mass Interlocal Insurance Assn. (MIIA) and their 'Risk Management' Dept., to add safety rails for the compactor opening and retaining walls to meet Occupational Safety and health Administration (OSHA) standards.

### **CYRUS STAGE ROAD BRIDGE:**

Construction on Cyrus Stage Road Bridge work is likely to start no sooner than Summer 2024, but possibly later depending on how the design progresses. I have been meeting with MassDOT to provide information obtaining easements and whatever other details are required. There are 3 landowners that are affected for either temporary or permanent easements for this important project. Federal funding through MassDOT will pay for the construction cost of the bridge with some minor expenses to be paid by the town.

### **FY24 BUDGET PLAN:**

It is that time of the year again when the Finance Committee and the Board of Selectmen ask departments to work on and submit their Fiscal Year 2024 (FY24) Budget requests by December 15<sup>th</sup> for review. All throughout the month of January and into February, Finance Committee and the Board of Selectmen will be meeting with Committees and Departments to review and finalize the FY24 Budget. Meetings are held in person and on Zoom, so anyone can attend remotely.

### **SEASON OF GIVING:**

With the Holiday Season and the spirit of giving upon us, I write to ask consideration for volunteering for the town, and giving your time for the benefit of our community. Specifically, there will be a need for 2 new members to serve on the Board of Health. Joanne Semanie filled in following the passing of Board Chair Maggie Rice, however, does not want to continue since her time as Selectmen Vice-Chair is a great demand of time and energy. A second member on the Board will not be running for reelection, thus the second slot will be required for this very important Board. It's a 'big ask' I know, but a very important role that our small community needs.

There will be other volunteer requests coming in the near future, please consider joining the group of people that donate, to the best of their abilities, some time to benefit the community and others. Perhaps you can fulfill a New Year's resolution to step up and get more involved in community activities. Please give it some consideration in the coming weeks.

Wishing you all the best for the Holiday Season.

# **Town Clerk**

Submitted by Paul McLatchy III

Office hours continue to be on Wednesday evenings from 6:00-8:00 and by appointment.

Thank you very much for all the people who turned out to vote at the state election on November 8th, and for the election workers who helped manage the polls. Election Day, while long, ran very smoothly. I was thrilled to have wrapped up the evening by 11:15 PM. The following is a summarized version of the contested races and only includes candidates who received at least ten votes. Complete election results are available on the website ([rowe-ma.gov](http://rowe-ma.gov)).

## **Governor/Lieutenant Governor**

Diehl/Allen (R)	87
Healey/Driscoll (D)	123

## **Attorney General**

Campbell (D)	118
McMahon (R)	92

## **Secretary of State**

Galvin (D)	126
Campbell (R)	83

## **Treasurer**

Goldberg (D)	131
Crawford (L)	47

## **Auditor**

Amore (R)	94
DiZoglio (D)	105

## **Representative in Congress**

Neal (D)	119
Martilli (R)	87

## **Councillor**

Comerford (R)	94
Jacobs (D)	113

## **State Senator**

Mark (D)	129
Phair (I)	48

## **Question 1: New Income Tax**

Yes	121
No	81

## **Question 2: Dental Insurance**

Yes	128
No	71

## **Question 3: Alcohol Reform**

Yes	95
No	108

## **Question 4: Referendum on Drivers Licenses**

Yes	105
No	99

## **Question 5: Carbon Fee (Non-binding)**

Yes	90
No	103

The annual census will be going out around the end of December. This only needs to be signed by one member of your household and ensures no one in your home will be inactivated as a voter. If you remain inactive for two state elections, you can even be deleted from the voter list.

While the local election is six months away, nomination papers for elected town office will be available beginning in January. A detailed explanation of what each position does

will be included in the January issue. The following positions will be up for election this year, along with the current incumbents, and term length (in years) is in parentheses:

- Board of Assessors (3): Rick Williams
- Board of Health (3): Dan Poplawski
- Board of Health (2): Joanne Semanie\*
- Board of Selectmen (3): Joanne Semanie
- Cemetery Commission (3): Joanne Semanie
- Constable (3): Henry Dandeneau
- Finance Committee (3 x2 seats): Loretta Dionne & Dan Pallotta
- Finance Committee (1): Marilyn Wilson\*
- Library Trustee (3): Rebecca Bradley
- Library Trustee (2): Lauren Werner\*
- Park Commission (3): Laurie Pike
- Planning Board (5): Daniel J. Burke
- School Committee (3): Susan Zavotka
- Town Clerk (3): Paul McLatchy III

\*Appointed to fill a vacancy until the annual election.



photo by Claudine Poplawski



## From the Board of Health

### ROWE TRANSFER STATION Mattresses and Textiles

As a reminder, effective November 1, 2022, disposal of all mattresses are now banned at the Rowe Refuse Gardens. Franklin County Solid Waste Management District (FCSWMD) has designated the Colrain Transfer Station as the collection hub for clean dry mattresses in our area. If you need to dispose of a mattress, it may be brought to the Colrain Transfer Station at: 7 Charlemont Road in Colrain for a fee of \$35.00. The Colrain Transfer station is open every Saturday from 8:00 am to 4:00 pm.

In addition, all textiles are banned from the regular trash. Textiles are defined as clothing, footwear, bedding, towels, curtains, fabric, and similar products. Please place these items in a dry plastic bag and deposit in one of the Salvation Army boxes, now located directly inside the Refuse Gardens gate. Thank you. Christine, BOH Clerk

**DO NOT PUT IN RECYCLING OR TRASH**



**Take textiles to a  
drop-off location.**

**Recycle  
Smart**

## Assessor's News

### Recent Property Transfers (Nov 2022)

The following are recent property transfers in Rowe. Further details may be obtained by researching the specific deeds at the Franklin County Registry of Deeds website at [masslandrecords.com/franklin](https://masslandrecords.com/franklin)

Deed Bk 8100 Pg 307, Van Der Maaten Estate to Stine, 32 Shippee Rd, \$475,000 (Map 202 Lot 058)

### FY23 Revaluation

FY23 Real and Personal Property Values: Department of Revenue (DOR) preliminary certification of FY23 proposed values was received the last week in November. The proposed values were posted online on the Town website and at the Rowe Town Hall and Post Office for a public disclosure period of November 28 through December 2. DOR final certification of values and the Classification Hearing with the Selectmen to set the tax rate will occur in early December such that the tax bills should go out by mid-December.

Total town valuation for FY23 decreased ~6.4% to \$492,172,756. This change was primarily due to a decrease in Bear Swamp value as a result of a negotiated settlement agreement to resolve past years appeals cases pending before the Appellant Tax Board (ATB). Residential home, building lot, and excess land values varied only slightly.

**HOW TO CONTACT THE ASSESSORS:** Assessor's Administrative Assistant Christine Bailey has posted office hours on Wednesdays and Thursdays from 8A-1P. She can be available other times by appointment. Christine can be reached at the Assessor's Office at 413-339-5520 x-104 or via email at [assessor@rowe-ma.gov](mailto:assessor@rowe-ma.gov). Refer also to the Assessor's page of the Town website: (<https://rowe-ma.gov/g/39/Board-of-Assessors>)



## Rowe Town Library News

Submitted by Molly Lane, Library Director

### HOURS:

**Tuesday 10-5**

**Wednesday 12-8 Thursday 3-7**

**Saturday 10-3**

Have you been in to see Donna's picks? Every couple weeks Donna picks a few books to order multiple copies of books she has researched and found to be highly recommended. Stop in for a quick read.

"Snow was falling,  
So much like stars  
filling the dark trees  
that one could easily imagine  
its reason for being was nothing more  
than prettiness." —Mary Oliver

The way a crow  
Shook down on me  
The dust of snow  
From a hemlock tree  
Has given my heart  
A change of mood  
And saved some part  
Of a day I had rued" —Robert Frost

Come view our holiday decorations. Susan Tomlinson has graciously let us display part of her collection of woodland Santas.

There will be no book chat this month. January we will have a new book and a date for our meeting.

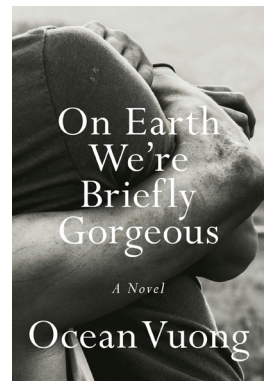
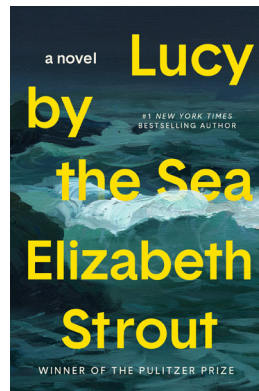
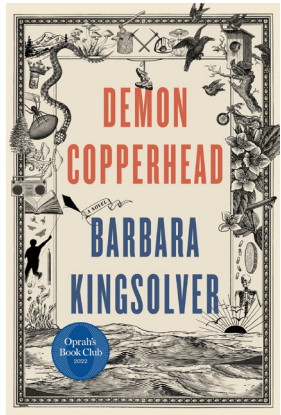
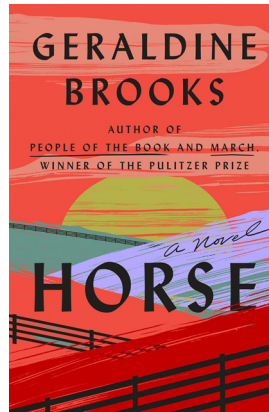
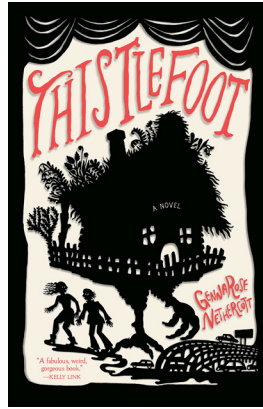
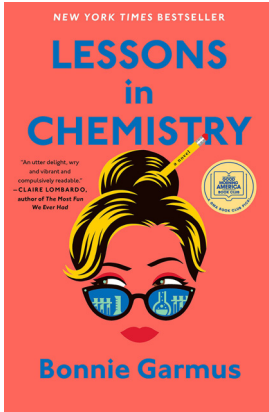
Thank you to community members Ramon Sanchez for helping keep our books dry in the outdoor book drop, Faith Travis for revamping and fall cleaning our outdoor perennial beds, and Cyndie Stetson for loaning us her amazing Halloween decorations

Come see us on Sunday December 11th we will be taking part in the Town of Rowe's first Frost & Flannel celebration from 2-4 pm. The library will have face painting, dreidel and a reading of "'Twas the Night Before Christmas" at 3pm.

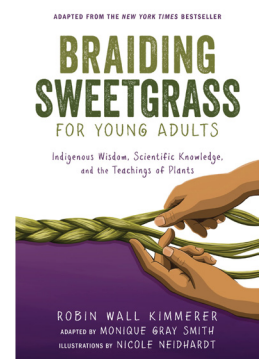
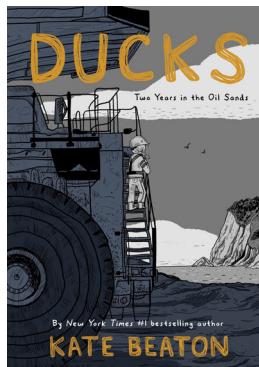
Contact the library if you would like to be put on our email notifications for programs [Rowelibrary@gmail.com](mailto:Rowelibrary@gmail.com)

## Some New Books:

### Adult Fiction:



### Graphic Novels:



### Young Adult:





It's been an interesting month here at the school. Last year at this time we'd just had our first positive COVID cases, which was challenging for staff, families, and for the students. Since then, thanks to our nurse, Lydia Brisson, and support from the Rowe Board of Health, the Rowe School Committee, and the NBSU Central Office, cases remained mostly isolated, we adjusted our plans accordingly, and were able to keep going over the last twelve months with our dual focus on engaging academics and keeping everyone safe. These days, while it is still serious when someone is diagnosed, due to experience and vaccinations, we follow the protocols, deal with the situation, and keep moving forward. As we broke for the Thanksgiving holiday this year, we encourage our community to stay vigilant, monitor for possible signs of or exposure to COVID, vax if eligible, and test when needed.

November is when we have Family Conferences, most in-person, some virtual, and many student-led. They are a valuable tool to help families learn more about their child as a learner, and to help the teachers learn more about students. As always, the teaching staff is finding creative ways to engage the students in new and different ways, making the loosened restrictions we have to work under seem normal. I encourage you to come see all the great things happening at the school, as visitors are allowed again.

With Thanksgiving just past, I want to reflect on some of the things I am thankful for. I am thankful to be a part of the Rowe School staff. I've never known a more dedicated, talented, and caring group of educators. I'm thankful to be part of the Rowe School Community, whose engaged and caring parents, guardians, and families help support the work we do in the school. I'm also thankful for students and staff who take their learning, both academic and social-emotional learning, seriously and who care about their classmates, the beautiful setting where we work, perfect for so much outdoor learning, for staff, families, and students who trust the facts and get vaxxed, and finally for our silly, sweet, and creative group of students who make me laugh every day.

Many of the students, families, and staff collected donations of non-perishable food items in November to be distributed at the Good Neighbors Food Pantry in Charlemont, some even volunteered for the distribution. We'll be doing the same in November, if you have items you'd like to donate, please bring them buy the school.

If you have thoughts, questions, or comments, please call me at 413-512-5101. You can also email me at [wknittle@roweschool.org](mailto:wknittle@roweschool.org). I look forward to hearing from you.

-Submitted by Bill Knittle



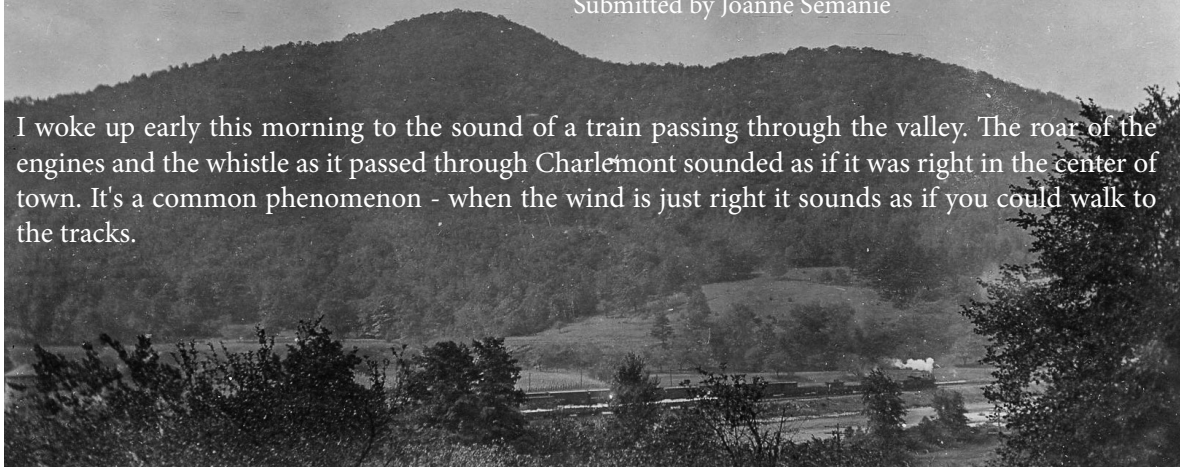




## Early Morning Musing

Submitted by Joanne Semanie

I woke up early this morning to the sound of a train passing through the valley. The roar of the engines and the whistle as it passed through Charlemont sounded as if it was right in the center of town. It's a common phenomenon - when the wind is just right it sounds as if you could walk to the tracks.



*Train in Zoar*

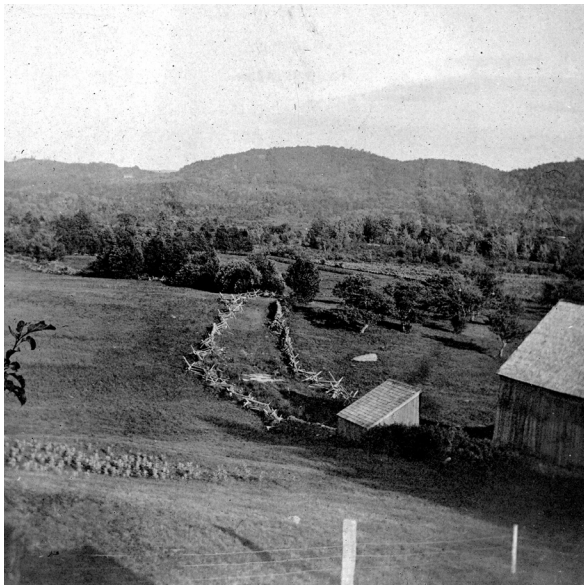
It made me think of a time in Rowe's history when people were almost completely dependent on the railroad for travel or commerce. Summer visitors would board the train in Chicago or Boston to come to Rowe to take in the fresh air. The visits were long and quite relaxing, I'm sure. Many households took in boarders, some enterprising individuals built cabins or camps to accommodate vacationers. Other families built or bought homes that were only used in the summer months.



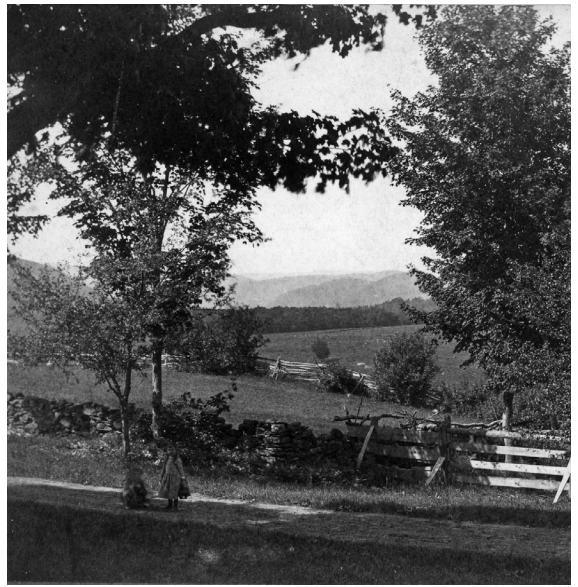
*Edward Wright and his team on Fort Pelham Farm 1900*

There were people in town with a good horse and buggy that would drive to Zoar to pick visitors up for their stay or residents coming back from bringing butter to North Adams to sell. Arrangements were made and the train was on schedule. It was a slow-motion Uber if you will.

Summer is the most glorious of times on Fort Pelham Farm. It's lush and green. The gardens are in full bloom and the birds sing you awake in the morning. You can take a little walk and see all sorts of wild animals - some visit that aren't always as welcome (bears) but are still a thrill to see. It's not just Fort Pelham Farm though, a drive about town gives a sense of why people want to come here. It's slower, cleaner, calmer.



*Back fields at Fort Pelham Farm*



*View of the hopper from Fort Pelham Farm about 1890*

There are still spots in town where you get a glimpse of what was once great views of the valley. Diaries speak of taking walks in the evening up Middletown Hill Road to take in the sunset.

The cool brooks and pools were always a welcome spot on a hot day and people took advantage of not just the big pond, but those little ponds scattered about town as well.

There was a big difference between the people in town working every day of the year and the summer people arriving in June to while away the summer months. I always fancy myself as a visitor sitting in the gardens, picking fruit as it came in. Reading a book, playing croquet or lawn tennis, eating a meal that someone else has grown and prepared.



These are the photographs we see at the museum. The pictures of people relaxed and enjoying their days here. There are very few taken in the winter and fewer still of the day-to-day life in the early 20th century here. Photographs, especially of a candid nature, were more of a luxury. We are fortunate to have the collection we do at the historical society. It gives a small glimpse into what we all know to be a most wonderful time of the year even if we don't get to ride a train to get here.





With winter upon us it's a great chance to get out and explore the park in a different way: snowshoe, hike, cross country ski, snowmobile, skating and ice fishing. Whatever your fancy, the park has you covered. You won't regret a winter night hike on a clear crisp night, to enjoy the stars or maybe if you're lucky, the elusive northern lights. Enjoy and make winter a great time. We have a few sets of snowshoes and spikes if you'd like to borrow them. Please call the park during the day and leave a message as to how to reach you and what day you'd like to borrow them.

### **Fitness center updated:**

Deb Lively is once again at the fitness center waiting patiently for your company. Her hours are Monday and Wednesday 9:00-11:00, 5:00-7:00. She is more than willing to help you get acquainted to all the equipment and help with any questions you might have. The Fitness center is also open any day the town hall is open (except Saturday) during Town Hall hours. Hopefully we will see you there.

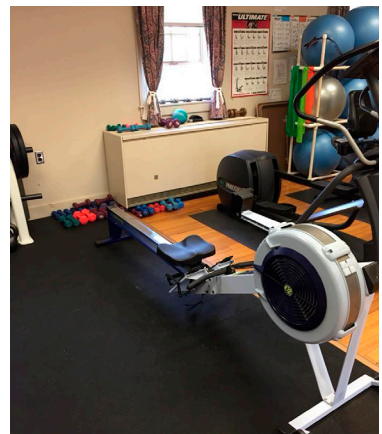
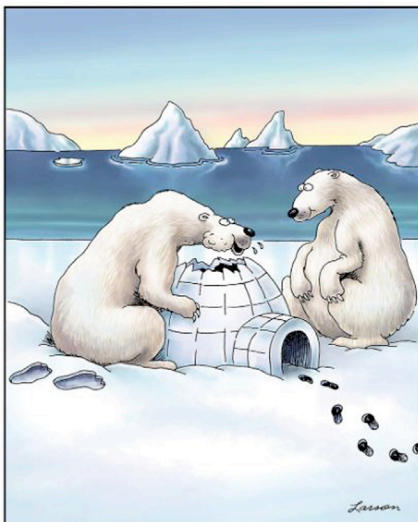


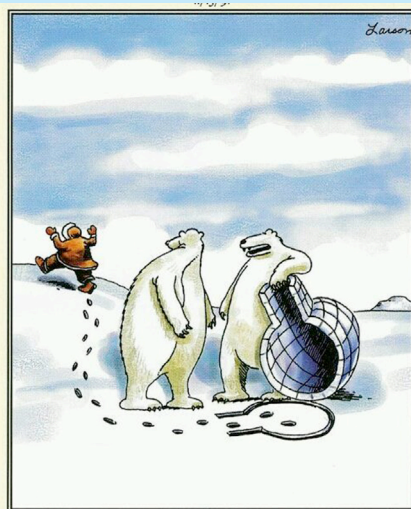




photo by Claudine Poplawski



"Oh hey! I just love these things! ... Crunchy on the outside and a chewy center!"



"I lift, you grab. ... Was that concept just a little too complex, Carl?"

### **Baby it's Cold Outside...**

When December 1<sup>st</sup> rolls around, it hits most of us square in the face! This winter may prove to be especially hard with heating bills on rise (not to mention every other bill steadily increasing), which is why it is even more important we are looking out for our (elderly) neighbors during the winter months. As we age, our bodies lose heat faster and changes related to aging can also make it more difficult to be aware of temperature changes. These aging changes can put elders at risk for a serious complication of 'being cold' - called hypothermia. Some symptoms of hypothermia include cold hands or feet, pale skin, shivering, acting tired, being angry or confused. As hypothermia progresses it can present as moving slowly or having trouble walking, having jerky or spastic movements, having a slow heart rate and slow or shallow breathing, and possibly a change in level of consciousness, including losing consciousness altogether. When the internal body temperature runs below 95°F, a person is at risk for other health related illnesses including heart attack, kidney and liver damage, or worse. It is important that we are looking out for our elderly or at-risk neighbors during the freezing temperatures.

Here are a few tips to stay warm:

- Set your heat to 68-70° F and wear warm clothes outside AND inside.
- Close off rooms that are not used in the house to conserve heat in the living spaces.
- Close blinds and curtains and eliminate drafts under doors with rolled up towels.
- When sleeping, wear thermal Pjs and have extra blankets.
- Make sure you are eating enough to maintain body weight. Fat and muscle help our bodies to stay warm.
- When going outside, make sure you dress for the weather, including a hat and scarf!
- Have a neighbor or family member check on you daily.

Enjoy the snow and cold weather (perhaps), but also remember to stay safe, bundle up, and look out for your neighbors! And have a very Happy Holiday Season!

References: <https://www.nia.nih.gov/health/cold-weather-safety-older-adults>

- There are still flu shots available in the Nurse's office- please call ahead if possible
- Monthly Foot Clinics are scheduled for the first Thursday of the month for the foreseeable future- to sign up please contact the Town Nurse to make an appointment.
- The Wellness Clinic has been rescheduled for January 26<sup>th</sup>, 2023- be on the lookout for more information!

The **Rowe School Friends of Good Neighbors** is hosting another food drive in December. We are gathering non-perishable food items to bring to the food pantry. Items may also include dog or cat food for our furry friends. Boxes are available for drop off at the library, Town Hall, or school lobby. We will be bringing all items to the food distribution on December 20th. The school recently reached their goal of 300+ items to donate to the Good Neighbors food pantry. With the town's help we would like to set a goal of 500 items! This is a way for us to give back to our local community.

Submitted by the RHM

Food Drive

Sunday, December 11

# Frost & Flannel



ROWE TOWN HALL

321 ZOAR ROAD



## 2 - 4 PM – EVENTS ON TOWN COMMONS

PICTURES WITH THE GRINCH

HOLIDAY LETTER WRITING

WINTER GAMES

HOT CHOCOLATE & S'MORES

TREE DECORATING

WREATH FUNDRAISER

& MORE!

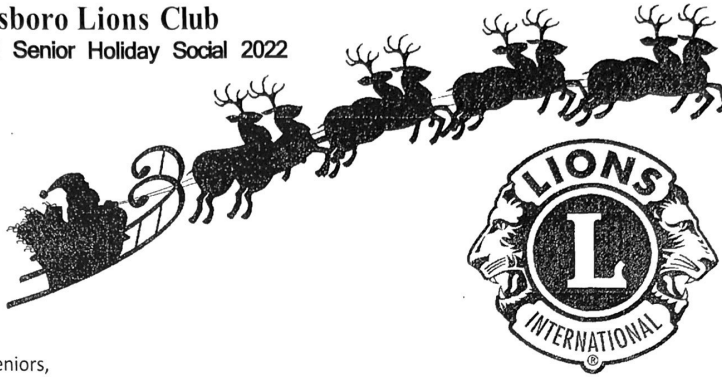
## 5 PM – POTLUCK AT KEMP-MCCARTHY MUSEUM

BRING YOUR OWN DISHWARE TO SAVE PLASTIC!

FOLLOW **ROWE TOWN LIBRARY FACEBOOK** PAGE FOR EVENT DETAILS



**Readsboro Lions Club**  
**Annual Senior Holiday Social 2022**



Dear Seniors,

The Readsboro Lions Club cordially invite seniors aged 62 or more from Rowe, Monroe Bridge and Readsboro to attend a Holiday Party and Dinner.

**Saturday, December 10, 2022**



Place: Readsboro Central School, Readsboro VT

Time: 12 noon - Social time noon till 1:00.

Come listen to the music, visit with friends, take a look at all the photos from past years.

Dinner: Served at 1:00. Turkey and all the fixings

Mr. & Mrs. Santa Claus and their elves will distribute gifts from the Lions.

The Readsboro Lions Club looks forward to seeing you and celebrating the season together.



## First Tuesday Fun

The Historical Society will continue to host their monthly games potluck on the first Tuesday of every month. Starting at 5:30, bring your favorite game and a dish to share. Friends of all ages are welcome.



Submitted by the Kerri McLatchy

## Rowe Community Church

Submitted by Ros Mullette

Dec.        4    #2   Advent & Praise Service  
              11   #3   Advent & Praise Service  
              18   #4   Advent & Praise Service  
              SATURDAY - DEC. 24 at 6:00 p.m. -  
                          CHRISTMAS EVE SERVICE

"Glory to God in the highest, and on earth peace,  
 goodwill toward men!" Luke 2:14

## December Birthdays

7 - Amy Hicks  
 9 - Laurie Ash  
 11 - Kristen Johnson  
 11 - Jonathan Lively  
 12 - Nancy Williams  
 12 - Jim Lively  
 12 - Danette Reynolds  
 13 - Michael Denson  
 14 - Barbara Roche  
 15 - Leonard Brown  
 15 - Craig Brown  
 16 - Walter Quist  
 17 - Connie Sherman  
 17 - Julie Sprague  
 20 - Lisa Lamore  
 20 - Jonathon Boyd  
 22 - Carol Lively  
 22 - Glenn White  
 23 - Susan Gleason  
 23 - Richard Vega  
 24 - James Mckee  
 24 - Kevin Myers  
 24 - Anne Besgen  
 25 - Melissa Houghtaling  
 26 - Joyce Boutwell  
 28 - Bill Loomis  
 28 - Ellen Miller  
 29 - Danielle Beaumier  
 30 - Alfred Morse  
 30 - Deborah Miller

If you would like to add or remove a  
 name from this list, please contact me at:  
[GoalPostEditor@gmail.com](mailto:GoalPostEditor@gmail.com)

# *Town Services*

## Town Main Line at 413-339-5520

<u>Position/Dept.</u>	<u>Ext #</u>	<u>Email Address</u>	<u>Hours</u>
<u>Admin Assistant</u>	<u>101</u>		
<u>Assessors Office</u>	<u>104</u>	<u>assessor@rowe-ma.gov</u>	<u>Wed 8-1 or by Appt</u>
<u>Board of Health</u>	<u>105</u>	<u>boh@rowe-ma.gov</u>	<u>Tues 8-1 Clerk</u>
<u>DPW</u>	<u>111</u>	<u>dwphighway@rowe-ma.gov (339-5588)</u>	
<u>Executive Secretary</u>	<u>100</u>	<u>townadmin@rowe-ma.gov</u>	<u>Mon-Thurs 9:30-5:00</u>
<u>Fire Dept</u>	<u>112</u>	<u>firechief@rowe-ma.gov (339-4001)</u>	
<u>Fitness Room</u>	<u>149</u>		
<u>Library</u>	<u>114</u>	<u>rowelibrary@gmail.com</u>	<u>Tues: 10-5 Wed: 12-8 Thu: 3-7 Sat: 10-3</u>
<u>Park</u>	<u>110</u>	<u>parkmanager@rowe-ma.gov (339-8554)</u>	
<u>Police</u>	<u>113</u>	<u>policechief@rowe-ma.gov (339-8340)</u>	
<u>Tax Collector</u>	<u>106</u>	<u>collector@rowe-ma.gov</u>	<u>Mon-Wed: 9:00-5:00</u>
<u>Town Accountant</u>	<u>102</u>	<u>accountant@rowe-ma.gov</u>	<u>By Appt.</u>
<u>Town Clerk</u>	<u>103</u>	<u>townclerk@rowe-ma.gov</u>	<u>Wed: 6-8:00pm or by Appt.</u>
<u>Town Nurse</u>	<u>107</u>	<u>nurse@rowe-ma.gov</u>	<u>Mon: 8-4, Wed: 10-6, and Thurs: 8-4</u>
<u>Transfer Station</u>			<u>Sat: 8- 2:00pm, Sun: 8- Noon, Wed: 7 -10am &amp; 4 - 7pm</u>
<u>Treasurer</u>	<u>108</u>	<u>treasurer@rowe-ma.gov</u>	<u>By Appt.</u>
<u>School</u>	<u>(413) 512-5100</u>		

Town Hall is open for normal business hours 9:30 a.m. to 5:00 p.m. Monday-Thursday

MASKS REQUIRED TO BE WORN IN ALL INDOOR TOWN PUBLIC SPACES - Per Board of Health as of 09/08/21

Please contact Executive Secretary at: (413)339-5520 ext. 100 for appointments whenever possible.

Seasonal resident MUST notify the Executive Secretary of any change in address.

The Rowe Goal Post  
P.O. Box 462  
Rowe, Massachusetts 01367

## **The Rowe Goal Post**

Available on the Town's website (<https://rowe-ma.gov/p/64/Rowe-Goal-Post>)  
the first of every month with paper copies sent out by mail the first week

Published by the Board of Selectmen 'in the interest of information  
exchange between all departments and all Rowe citizens.'

All submissions for the next issue are due by the 25th.  
Any articles received after this time cannot be guaranteed that  
they will appear in the next issue.

Please e-mail all items to:  
[GoalPostEditor@gmail.com](mailto:GoalPostEditor@gmail.com)

Please send only high resolution images (do not resize).

If you have a question about your subscription or want to make a change to the mailing list,  
please contact the Town Administrator at:  
(413) 339-5520 x100  
[admin@rowe-ma.gov](mailto:admin@rowe-ma.gov)

Seasonal residents MUST notify the Administrator of any change in address.