



Volume 40

Issue 11

Established 1975

# *THE Rowe Goal Post*

November 2021



photo by Maria Paradis

## **From the Town Hall**

Submitted by Janice Boudreau

### **DESPERATELY SEEKING VOLUNTEERS:**

We can all recall the posters that were prominent during world war II that urged citizens to be involved, they screamed, "WE NEED YOU". I don't think there is any other polite way to ask, but the town needs you. It takes more than hired personnel to attend to town business, it takes volunteers to serve, to get involved and to care about the future of the town. Many of the current volunteers serve on several committees and, work full-time jobs in addition to maintaining their personal life. It seems like we are in a time when there are fewer and fewer that chose to be involved.

I acknowledge that there are many in a small town that have served many years in the past and feel like it is time for others to step forward. Please consider the following openings that need volunteers:

### **Beautification Committee:**

Two openings to serve on the Beautification Committee to work directly or plan projects to improve the Town grounds. Cindy Stetson would love to work with you.

### **Conservation Commission:**

One 3-year seat on the Conservation Commission is open. Conservation Commissions are responsible for protecting the land, water and biological resources of their communities. They serve the community in a regulatory as well as a conservation capacity. The Rowe Conservation Commissioners are appointed to three-year terms by the Select Board. Commissioners are expected to complete fundamentals training and attend periodic educational seminars. Anyone interested in serving is welcome to attend a

meeting or contact Ramon Sanchez with questions.

### **Council on Aging:**

Four vacancies on the Council on Aging. Plan events and organize services for our valued older citizens. Provide meaningful educational, social, recreational, cultural and volunteer opportunities to encourage participation and community involvement. Susan Tomlinson needs more members to work with her.

### **Finance Committee:**

One opening is needed to serve on this very vital committee. Help shape the future of the town and have a voice in setting priorities. Chair Dan Pallotta would like to see a strong full 5 member group to work with and needs a fifth member as soon as possible.

### **Old Home Day 2022 Committee:**

Feeling like we need a gathering: Work in conjunction with the Rowe Volunteer Firefighters' Association to plan Old Home Day Activities for the return of the event in 2022.

### **Open Space Committee:**

Implement an Open Space and Recreation Plan for the Town. Ensure that Rowe protects farmland, forest land, scenic views and other open space vital to sustaining the town's historic rural character and maintaining the quality of air, water, and wildlife habitats. Having an Open Space Plan will help enable Rowe to apply for grants in the future.

### **Veteran's Representative:**

Represent Rowe with the Upper Pioneer Valley Veteran's Service District. Open to Veterans to serve.

### Zoning Board of Appeals:

Two seats on the Zoning Board of Appeals are open. Members meet sparingly, usually only to address requests for variances from property owners. Get involved if you want to be a part of guiding the direction of the future.

### VOLUNTEER IN YOUR TOWN :

Contact Janice Boudreau at 339-5520 ext. 100 with your interest or questions.

### In Other News:

We welcome Ashley Brown to the position of Administrative Assistant. Ashley spent part of her childhood in Rowe and has recently returned to town with her daughter Harper. She dreams of someday having a home of her own in Rowe. She works Monday through Thursday 9:00 a.m to 3:00 p.m. She looks forward to meeting and working with you.



photo by Kevin Myers

### TOWN CUSTODIAN

Town of Rowe seeks part-time CUSTODIAN to clean town buildings.

Flexible hours approximately 20 hours per week.

Contact: Janice Boudreau, Executive Secretary for more information 413-339-5520 ext. 100

### Town Clerk

Submitted by Paul McLatchy III

Office hours continue to be on Friday evenings from 6:00-8:00. If this time frame does not work for you, I am happy to make an appointment for another night or on the weekend. I check email, messages, and mail frequently and can also check voicemail and email remotely. While it may not seem like it, it won't be long before those once-a-year tasks come along. Annual street listings will be going out in December, dog licenses will begin starting in the new year, and we'll even be getting nomination papers ready for circulation January 3rd. It's never too early to start thinking about running for office - we always need new people!

The 2020 census results have come in, and Rowe's population has officially broken 400-424, to be exact. The Board of Selectmen voted to remain a single-precinct town for another ten years, which makes sense for a town our size. Towns can remain a single precinct until they reach 6,000 people, so Rowe still has a while to go before we hit that mark.

More information will be in the December Goal Post regarding the census and dog tags/licenses, and January's issue will feature more information on elected positions that are open.

## Broadband Outage and Our Plans to Improve Reliability

Submitted by David Dvore, Rowe Broadband MLP Manager

As most of you know, there was a 16 hour internet outage for the entire towns of Rowe and Heath. We don't have all the details as yet, but this was due to a line break of the MB123 middle mile network that we use for backhaul in Shelburne.

Backhaul is the connection between our town fiber network and the outside world. We need to connect from our equipment hut in the center of town down to Springfield, where there is tier 1 internet connectivity. For this purpose, we are using the MB123 network built by the Commonwealth in around 2010. Unfortunately, this network is not as reliable as we would like, and Local Lynx, the company hired by MBI to operate the network, does not repair lines as quickly as they should. After the 9 hour outage in March, our network operator, WG&E, negotiated with MBI about solutions. The disappointing result is that rather than shoring up their network, MBI is requiring towns to purchase second circuits that take a different route. We have ordered such a circuit as a short term solution, but was not implemented in time.

We have had plans for years to interconnect adjacent town networks in order to share backhauls with bulk rates and create diverse paths so that a single line break could not create an outage. The problem is that our neighboring towns are only completing their networks now. Heath is recently complete, and Charlemont, Colrain, and Leyden will be complete in the coming months. We have

been in talks with them and WG&E to make plans for much more robust backhaul. Rowe is blessed to have access to Crown Castle fiber that runs on the high towers of the regional electric grid above the tree tops. It should be very stable. The plan so far is to share a primary Crown Castle circuit, and eventually to also share a circuit, probably from Verizon, in Charlemont and/or Leyden. We're working on the details and agreements. It may take up to a year to complete, but should make our backhaul connectivity much more resilient once it is.

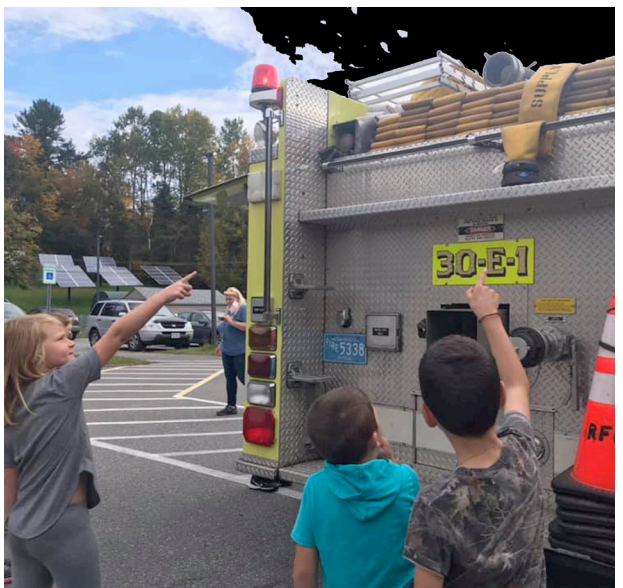
I'd be happy to meet with anyone who is interested in learning more about our Broadband network and how we manage it.



photo by Sue Williams



Thank you Mr McLatchy for bringing the fire truck over to Rowe School.





## Rowe Town Library News

Submitted by Molly Lane, Library Director

### **NEW HOURS!!**

**Tuesday 10-5**

**Wednesday 12-8 Thursday 3-7**

**Saturday 10-3**

The library is looking for residents interested in teaching a 1 hour activity to students during our 6 week program. Do you have a passion for wildlife? Cooking? Woodworking? Fishing? Creating? The ideas are endless. Email or call us at the library for more details.

No appointments necessary.  
If you are more comfortable picking items up we will still offer curbside service.

Masks are still required inside the library building.

### **Programs:**

The Library will be closing early @ 3 pm on Wednesday November 24th to allow our staff to celebrate the holiday with their families.

#### **Adults:**

Thursday November 4th @ 6:30pm Hunter Gibson photography exhibit Opening Reception

Wednesday November 17th @ 5:30 pm How to assemble a Charcuterie (cheese board) with Dawn Beaumier. Call or email the library to sign up, space is limited

Book Club will be taking a Hiatus until 2022

#### **Kids:**

Thursday November 4th After School- Early release kids after school craft

Contact the library if you would like to be put on our email notifications for programs Rowelibrary@gmail.com

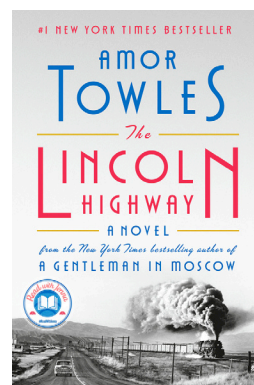
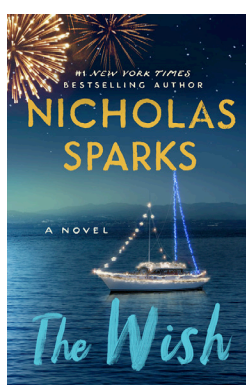
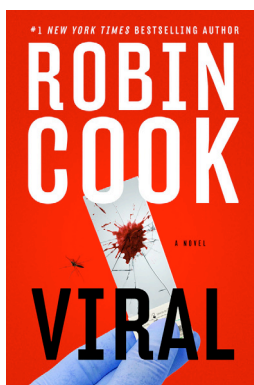
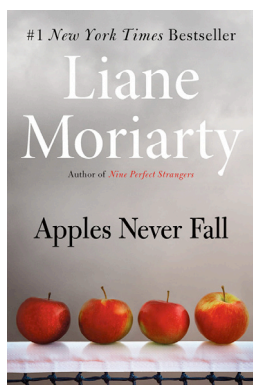


Hunter Gibson's photography will be on display throughout the library for the next few months. Hunter grew up in Charlemont and Shelburne Falls. He began taking photos around the 11th Grade as a hobby where his initial interest came from seeing photos and prints taken by his oldest brother Troy White, a mix of landscape and portraits shot digitally and on film. Hiking and the unique places that it takes you, has always been a joy of Hunter's, so landscapes seemed like the most natural starting point. He then took graduation photos as well as Prom photos for friends and family, but the added stress of not getting a good shot in those situations kept him from enjoying them as much as landscapes. Most recently (started during The Covid Lockdown) birding has become one of Hunter's hobbies as well. The focus it takes to get a bright, sharp, and well composed photo of a bird has kept photography interesting. On top of that, learning about the many species just in our area and meeting the people that are interested in them has been great.

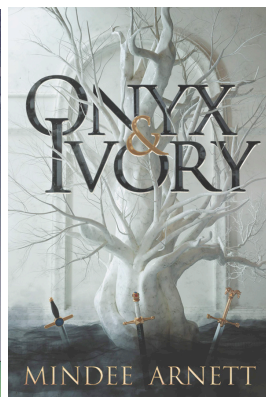
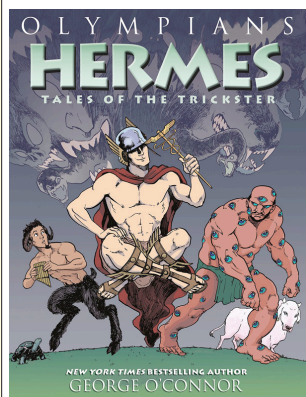
Please join us for an Opening of Hunter Gibson's art and ask him about his photos on November 4th @ 6:30 pm. Light refreshments will be served outside.

### Some New Items This Month

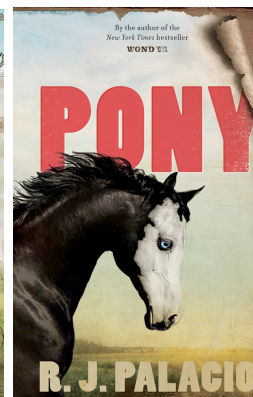
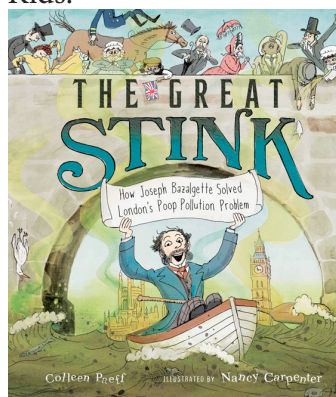
#### Adult Fiction:



#### Teen:



#### Kids:





Thanks to the staff of the Rowe School (special thanks to our nurse, Lydia Brisson), the families of our students, the various departments of the Town of Rowe (special thanks to the Board of Health), the Rowe School Committee, and the North Berkshire School Union Central Office, we are now safely through eight weeks of in-person school. The systems are working as they are supposed to: we've had staff and students referred to their primary care physicians for evaluation based on their symptoms, some were directed to take COVID tests due to their exhibiting some cold or allergy symptoms that could have been something more serious, and the rapid testing program at the school has allowed adults and children to stay in school who might otherwise have had to quarantine for days until test results came through. Rather than take a chance, they all stayed out of school until their results came back, thankfully all negative so far, and now they are back teaching and learning. This is how the system should work, when someone has symptoms that could indicate COVID, we act as if they have it and proceed accordingly. With families being vigilant at home, and Mrs. Brisson and the teaching staff doing the same at school, we're doing our best to keep everyone in both places safe. It will get more challenging as the colder weather begins, so it's important that we all continue the important work everyone is doing. In addition to keeping us learning in-person, the efforts families and staff are putting in could be the reason someone else is alive today. Seems like it's worth it.

Our new schedule has been going well since school started in September. School starts at 8:30, students can arrive as early as 7:45, and dismissal is at 3:15 Monday-Thursday, and at 12:30 on Fridays. The school day for the staff stays the same. This change allows the teaching staff to have the time to adequately plan for the challenging and exciting opportunities facing us.

Outdoor learning will continue to be a big part of how we engage and educate our students, even as the weather turns colder. All of the classes have been making regular use of the beach and trails at Pelham Lake Park, it's exciting to see so much learning going on outside the school building. Thanks to Sean and the Park for accommodating us.



Each class has been doing interesting things to keep the students engaged and learning. P1 (3-year-olds) built an interactive apple stand display, P2 (4 and 5-year-olds) have been counting and learning their shapes, P3 (first and second grades) have been exploring the beach and Percy's Point, the 3/4 class has been getting great use of their Outdoor Classroom up the hill behind the school, and did a community service project at the Town Library, and the 5/6 class has been honing their writing and art skills both inside and outside the school. All of the classes have been learning Spanish with our new Spanish Teacher, Jessica Gibbs-Burisma (Señor Phillipé retired in October), and working hard in PE and getting creative in Art. I encourage you to join the Rowe School Community Facebook page to see the amazing things happening in and out of the school.

As always, if you have questions or concerns, please call me at 413-512-5201. You can also email me at [wknittle@roweschool.org](mailto:wknittle@roweschool.org). I look forward to hearing from you. I'm sorry that we can't have you visit in person this year, but there's always next year!

-Submitted by Bill Knittle



Outdoor meeting



Nature Journaling time



P2 counting & learning shapes



## Miss Charlotte Mills Cottage

Submitted by Joanne Semanie



63 Middletown Hill Rd (Loomis, Sean & Leann)

Midway up Middletown Hill Road there once was a cottage that was built by Miss Charlotte Mills of Hartford. She was born in Scotland in 1856. In 1862 at the age of six she immigrated to the US with her parents and 4 sisters. They all lived in Hartford, CT. According to census records Charlotte never worked. She inherited her home and lived there along with her sisters and one nephew until her death in 1937.



In 1892, for the sum of fifty dollars Charlotte purchased a half acre lot from Edward Wright on which she built her summer cottage. She would often have company and the neighbors, the Wrights, were involved in many of those visits. She would have taken the train into Zoar and would be picked up and brought to her cottage.



Charlotte is the woman in the white blouse in the photograph, the boy is Harry Foster who lived with her most of his life.



The view from the top of the hill was picturesque. Charlotte's cottage can be seen on the right looking towards the center of town.

*This cottage was struck by lightning one summer afternoon and burned to the ground. 2001-20  
Miss Mill's nephew, Harry Foster, started to build another cottage on that site but never completed it.*

There were summers when she would rent the house out to visitors to Rowe, rumor has it that there was a serious bedbug infestation one year and it made staying there less appealing.

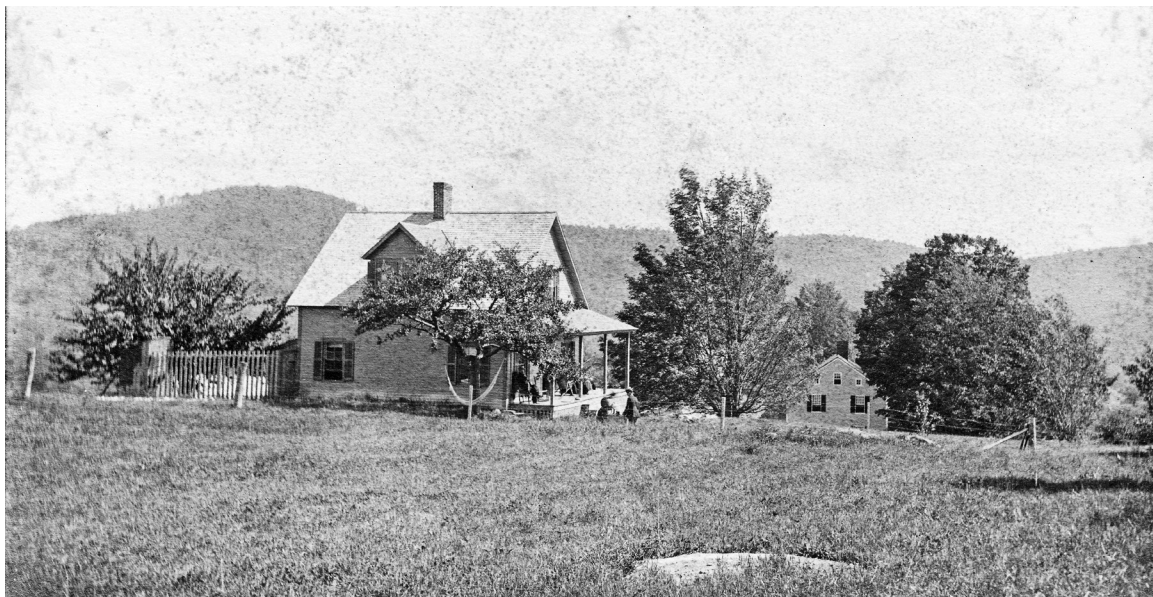
In the early 1930's the cottage was struck by lightning and burned to the ground. Nancy Williams recalls as a young child standing in the driveway of the Wright place and watching it burn. Olive Wright marked the occasion by writing a note on the back of a photograph of the house.

Not long after the fire Charlotte gave the property to Harry Foster. As can be seen in the note he began rebuilding but never finished. In 1948 James Foster, acting as agent for his father's estate sold the property to Rachel Fuller Abbot. More land was purchased and a new house was built and sold to Marion and Cornelio Franceschetti in 1956.





The view of Miss Mill's cottage from the driveway of the Wright's (59 Middletown Hill Rd.)



If you would like to more about your house or if there are photographs of it in the museum collection contact Joanne Semanie, she may be able to find some treasure you've never seen before.



## WELLNESS ACTIVITIES FOR ROWE RESIDENTS

There are currently TWO wellness/mindfulness activities available to Rowe residents:

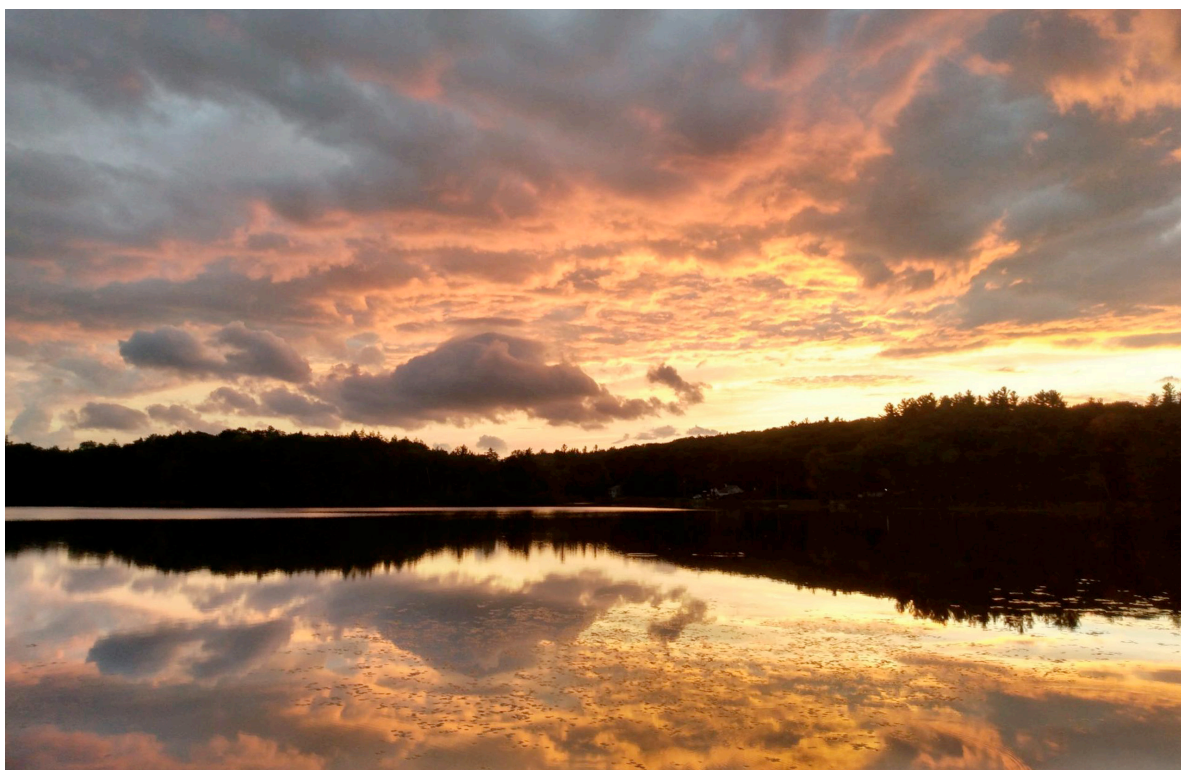
**Rowe Community Yoga** - Tuesdays 8:30 - 9:30 on Zoom. Sponsored by the Rowe Parks and Rec Department.

**Chair Yoga** - Exploring the Five Elements - Fridays 9:30 - 10:30 on Zoom. Sponsored by the Rowe Cultural Council. Series runs through 11/19.

Both classes are **FREE** and great ways to enhance strength and balance in body, heart and mind by working with breath centered movement. All are welcome - these classes are beginner friendly, and provide challenges for experienced practitioners as well. Email Kate Peppard for login details and come on in ([kate@highlandyoga.studio](mailto:kate@highlandyoga.studio)).



Kate and her trusty yoga assistant, Ranger.





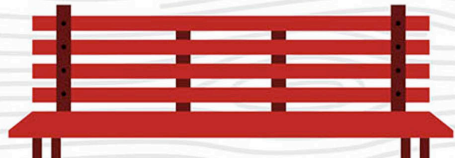
## Sharps Collection

The BOH will continue to collect sharps for disposal at the Town Hall.

There is a box inside the side door for the Nurse where you can drop off your sharps container. If you need a new container contact the BOH office at 339-5520 ext 105 and leave a message. We will make an appointment to get one to you.



DON'T FORGET TO  
**FALL BACK**  
*November 7<sup>th</sup>*





**Three Famous Boulders** - by Nan Williams

This week the Tuesday hikers bushwhacked into the wilderness over west to find again the south west cornerstone of the original grant of 10,000 acres bought by Cornelius Jones in 1762. He named it Myrifield, "A field of 10,000." This grant with others became the Town of Rowe in 1785. Along Tunnel Rd are three famous boulders known as Shadrach, Meshach, and Abednego. They were probably named back in 1900 when there was Camp Marlynarotha for summer guests on the property.



one of the three famous boulders

**What is that weird plant???**

asked by Selmi Hyytinen



photo by Selmi Hyytinen

I think we can all agree that Selmi found some kind of fungus...but which one??

*Herichium erinaceus* (also called lion's mane mushroom, monkey head mushroom, bearded tooth mushroom, satyr's beard, bearded hedgehog mushroom, pom pom mushroom, or bearded tooth fungus) is an edible mushroom belonging to the tooth fungus group. Native to North America, Europe and Asia, it can be identified by its long spines (greater than 1 cm length), occurrence on hardwoods, and tendency to grow a single clump of dangling spines.

In the wild, these mushrooms are common during late summer and fall on hardwoods, particularly American beech or oak. Usually *H. erinaceus* is considered saprophytic, as it mostly feeds on dead trees. However, it can also be found on living trees, so may be a tree parasite as well

Both the Latin genus name *Herichium* and the species name *erinaceus* mean 'hedgehog' in Latin  
Edible when young, becoming sour with age.

Nice find, Selmi!

*Have you seen a flower or plant (or moss) in town that you want to know what it is?  
Send me a photo at [goalposteditor@gmail.com](mailto:goalposteditor@gmail.com)*



# Beware of the GRANDPARENT SCAM

in which a scam artist poses as your grandchild in trouble.



- They pretend to be your grandchild calling in the middle of the night;
- They tell you they are in some sort of trouble;
- They plead with you to keep it a secret, not to tell their parents;
- They will often have a second person pose as an official who will validate the claim;
- They ask you to wire money for "bail" or other problems via Western Union, Money Gram or even to mail cash.

## What can you do?

- To avoid falling prey, ask your "grandchild" to prove who they say they are;
- Trust but verify; call the child's parents
- HANG UP!

*If you have a consumer problem or question, contact:*

**Northwestern District Attorney's  
Consumer Protection Unit**

Greenfield (413) 774-3186    Northampton (413) 586-9225

Working in cooperation with the Office of the MA Attorney General



"The wind that makes music in November corn is in a hurry. The stalks hum, the loose husks whisk skyward in half-playing swirls, and the wind hurries on... A tree tries to argue, bare limbs waving, but there is no detaining the wind." - Aldo Leopold

photo by Meredith Sokol



HEATH, MA

## WINTER 2021 AT BRANCH VIEW FARM

Christmas trees, wreath sales and gift shop with handmade crafts from local vendors, open weekends:

Friday, November 26 through  
Sunday, December 19,  
10 a.m. – 4 p.m.

Check our website often to see new holiday events!

12 West Branch Road, Heath, MA  
**branchviewfarm.com**

### Rowe Community Church

Submitted by Ros Mullette

- Nov.    7 Worship Service with the Gideons  
           14 Worship and Praise Service  
           21 Thanksgiving Worship & Praise Service  
           28 #1 Advent Sunday Worship Service

Bible studies are held on Wednesdays at 7:00 p.m. and will be held on November 3, 10, and 17.

Praying that you all will have a blessed and special Thanksgiving!

## November Birthdays

- 4 - Io Sokol
- 5 - Sue Alix Williams
- 5 - Julie Moran
- 8 - Taylor Bailey
- 10 - Margorie Morse
- 10 - Jill Rose-Fish
- 11 - Kimberly Gabert
- 13 - Kris Swenson
- 13 - Mike Bradley
- 14 - Dennis May
- 15 - Cindy Laffond
- 17 - Florence Bjork
- 17 - John Baldwin
- 17 - Brian Crowningshield
- 18 - Helen Shields
- 21 - Gabriella Larned
- 22 - Madison Baker
- 22 - Nicole Wrisley
- 24 - Tim Snyder
- 28 - Spencer Laffond
- 30 - Paul Mclatchy III
- 30 - Laurie Pike

If you would like to add or remove a name from this list, please contact me at:  
[GoalPostEditor@gmail.com](mailto:GoalPostEditor@gmail.com)

## *Town Services*

<u>Position/Dept.</u>	<u>Ext #</u>	<u>MAIN</u>	<u>Alternate</u>		<u>Email Addresses</u>
		<b>PHONE#</b>	<b>Phone #</b>		
Admin Assistant	101	339-5520			
Assessors Office	104	339-5520			<a href="mailto:assessor@rowe-ma.gov">assessor@rowe-ma.gov</a>
Assessors FAX			339-8585		
Board of Health	105	339-5520			<a href="mailto:boh@rowe-ma.gov">boh@rowe-ma.gov</a>
Conference Rm 2nd Fl	148	339-5520			
DPW	111	339-5520	339-5588		<a href="mailto:dpwhighway@rowe-ma.gov">dpwhighway@rowe-ma.gov</a>
Executive Secretary	100	339-5520			<a href="mailto:townadmin@rowe-ma.gov">townadmin@rowe-ma.gov</a>
Fire	112	339-5520	339-4001		<a href="mailto:firechief@rowe-ma.gov">firechief@rowe-ma.gov</a>
Fitness Room	149	339-5520			
Hearing Room #1	150	339-5520			
IT/Server Closet Area	147	339-5520			
Library	114	339-5520	339-4761		<a href="mailto:rowelibrary@gmail.com">rowelibrary@gmail.com</a>
Park	110	339-5520	339-8554		<a href="mailto:parkmanager@rowe-ma.gov">parkmanager@rowe-ma.gov</a>
Police	113	339-5520	339-8340	339-0139 (H)	<a href="mailto:policechief@rowe-ma.gov">policechief@rowe-ma.gov</a>
Tax Collector	106	339-5520			<a href="mailto:collector@rowe-ma.gov">collector@rowe-ma.gov</a>
Town Accountant	102	339-5520			<a href="mailto:accountant@rowe-ma.gov">accountant@rowe-ma.gov</a>
Town Clerk	103	339-5520			<a href="mailto:townclerk@rowe-ma.gov">townclerk@rowe-ma.gov</a>
Town Nurse	107	339-5520			<a href="mailto:nurse@rowe-ma.gov">nurse@rowe-ma.gov</a>
Treasurer	108	339-5520			<a href="mailto:treasurer@rowe-ma.gov">treasurer@rowe-ma.gov</a>
Gracy House	-		339-4276		
School			413-512-5100		
Town Hall FAX			339-5316		

### **Town Main Line at 413-339-5520**

Town Hall has reopened as of June 17<sup>th</sup> for normal business hours 8:00 a.m. to 5:00 p.m. When visiting Town Hall, please wear a mask if you have not been vaccinated for Covid-19 or if you feel it necessary. Please contact Executive Secretary at: (413)339-5520 ext. 100 for appointments whenever possible.

Seasonal resident **MUST** notify the Executive Secretary of any change in address.

The Rowe Goal Post  
P.O. Box 462  
Rowe, Massachusetts 01367

## **The Rowe Goal Post**

Available on the Town's website (<https://rowe-ma.gov/p/64/Rowe-Goal-Post>)  
the first of every month with paper copies sent out by mail the first week

Published by the Board of Selectmen 'in the interest of information  
exchange between all departments and all Rowe citizens.'

All submissions for the next issue are due by the 25th.  
Any articles received after this time cannot be guaranteed that  
they will appear in the next issue.

Please e-mail all items to:  
[GoalPostEditor@gmail.com](mailto:GoalPostEditor@gmail.com)

Please send only high resolution images (do not resize).

If you have a question about your subscription or want to make a change to the mailing list,  
please contact the Town Administrator at:  
(413) 339-5520 x100  
[admin@rowe-ma.gov](mailto:admin@rowe-ma.gov)

Seasonal residents MUST notify the Administrator of any change in address.