



Volume 40

Issue 8

Established 1975

# *THE Rowe Goal Post*

August 2021



Photo by Ellen Miller

## From the Town Hall

Submitted by Janice Boudreau

I have had a few comments about hearing my voice back out on the town ROBO calls. I am happy to be producing them since it represents the important change of resuming to our regular events in life. So, yes, you will hear from me more in the coming months and know that you can receive notices by telephone or, if you prefer and let me know, to receive the messages as emails or both.

### Employee News:

The big news for this month is that 2 valued employees have decided to take jobs elsewhere. Nurse Chelsea Betsold elected to accept a position in her chosen field with her last day as Friday, August 6th. Chelsea has great “bedside manner” and compassion for people, in the short time she was here, we will miss her greatly.

The second employee, Paul McLatchy III who has served as the town’s Administrative Assistant to the Boards, for 2 years has resigned from that position. Prior to that role of 32 hours, he was administrative assistant for 8 hours per week for one year prior. In that time, he has accomplished a great deal, especially in the organization of town records and completing the digitalization of a great amount of records. He has been the back-up for the Treasurer and reorganizing the human resources files. Paul applied for many grants and managed them once approved. He has been a great resource for all of us and we will greatly miss his input and dry humor. Our loss is Ashfield’s gain, as he assumes the role of Town Administrator with his last day on July 23rd. He will take over the position from another town resident, Jennifer Morse, who has moved on to the town of Cheshire serving as Town Administrator. Paul will, however, continue serving as Rowe Town Clerk and Planning Board Chair.

Thank you, Paul and Chelsea for your great service.

A special thank you goes out to Police Officer Kyle Sweeney, who took a Water Safety Certification Class to now and is now a Certified Water Safety Instructor and can share his knowledge with others. It required many hours of training and is a great asset to the area.

### Committee Vacancies:

We are so grateful to all of you who are volunteering your time to serve on a town board or committee. Without you, the work of the town cannot move forward.

Following our regular appointments there are still vacancies that need to be filled. Please contact me if you have any interest:

- **Beautification Committee** – needs more members. Contribute to the community in a hands on way.
- **Council on Aging** – needs 4 new members  
Four vacancies on the Council on Aging. Plan events and organize services for our valued older citizens. Provide meaningful educational, social, recreational, cultural and volunteer opportunities to encourage participation and community involvement.
- **Conservation Commission** – Needs 2 new members
- **Planning Board** – needs 2 members
- **Old Home Day 2022** – needs members  
Make the return of Old Home Day, after 2 years of pause, a memorable event.

Please consider serving the town, without your service the town cannot thrive and grow. We hope your Summer is enjoyable and safe.

*“Volunteers do not necessarily have the time; they just have the heart.”* – Elizabeth Andrew

## Town Clerk

Submitted by Paul McLatchy III

Starting July 26th, I will be starting a new role as the Interim Town Administrator in Ashfield. While I will continue serving as town clerk, I will no longer be available during the day in the administrative office down the hall. Office hours will be on Fridays from 6:00-8:00, though I will still be checking in several nights a week. As my new job will require evening meetings, it is difficult to commit to a particular night of the week for office hours other than Friday. If this time frame does not work for you, I am happy to make an appointment for another night or on the weekend. If you see my car in the parking lot at town hall, feel free to stop on in. I will be checking voicemail, email, and mail at least three or four times a week.

I am happy to announce that Terry Green has been appointed as the assistant town clerk until next June. I have had the pleasure of working with Terry for the past year in her role as treasurer, and feel that our organizational styles are similar enough for her to understand and work with the digital records system I've developed. She is still in training, but will be able to fill in during periods of absence and assist in elections. My hope is to have a person adequately cross-trained so that in the event of a vacancy in the office, the day-to-day operations will be minimally impacted.

At this time there is little else going on in the town clerk's office as summers are pretty quiet for towns. I have been working on trying to get officials and employees up to date on their ethics/open meeting law paperwork, and also have been swearing people in as they are appointed/elected to various offices. If you haven't, please remember to get sworn in. All ethics and open meeting law paperwork/courses can be found on the town clerk page on the website and need to be completed every two years.

## Alternate Transfer Station Attendant Position

Position includes but is not limited to:

- Responsible for coordinating the operations of the Transfer Station; maintaining the area in a clean, safe and organized manner.
- Provide courteous and friendly assistance to Rowe residents and assist in the proper disposal of recyclable materials.
- Maintain a log of activity.

Physical demands include but are not limited to:

- Walking on uneven terrain, grass and gravel surfaces.
- Reaching overhead to close bins.
- Bending activities.
- Lifting weights up 50 pounds.
- Shoveling snow and use of snow blower.

Work Schedule:

- This is an on-call position when the full-time attendant is unable to come in.

Please call the BOH office and leave a message at 413-339-5520 ext 105 or email your interest to [BOH@rowe-ma.gov](mailto:BOH@rowe-ma.gov)

## Little Voices

Hark!

I hear little voices  
echoing through my window.

Little voices filled with  
joy and squeals.

TV off, book aside.

I listen and they warm my heart.

Little voices calling to  
other little voices

Little feet running.

Little swings swinging.

Music to old ears.

Jodi Brown



## **New Swap Shed Guidelines**

The Swap Shed is reopening after a year long break and was recently cleaned out to make it easier to look at what is there. Any resident with a current Refuse Garden Tag may drop off useable items for other residents to take at no charge or just take items for free from the Swap Shed. Gently used items in good condition can be donated at the shed. The purpose of the Swap Shed is to reduce the number of items discarded, and to get usable items into the hands of those who can use them.

The hours of operation will be the same as the regular Refuse Garden hours.

What to bring and NOT to bring: Items must be clean, dry and in good working order.

### **Acceptable Items:**

- Household items (glasses, silverware, cookware)
- Toys, games, puzzles (not broken or missing pieces)
- Home repair tools (small)
- Lawn & garden equipment (gardening tools, bird feeders)
- Sports equipment
- Small, clean and functional appliances (toaster, hair dryer, iron)
- Bicycles
- Small furniture items (in good condition)

### **Unacceptable Items:**

- Child safety equipment, car seats
- Stuffed toys (Use Salvation Army box)
- Large and/or upholstered furniture
- Electronics: televisions, computers, monitors, speakers, printers, faxes, etc.
- Clothing, shoes, bedding (linens or pillows) (Use Salvation Army box)
- Large appliances
- Mattresses or cribs
- Suitcases
- Carpets
- Household hazardous materials
- Health and beauty aids
- Anything broken, dirty or missing parts

All items must be deemed acceptable by the attendant on duty. If you are uncertain, call beforehand to avoid the hassle of loading your car and being rejected.

Call 339-5520 ext 105 on Wednesday evenings 4-7 or email [boh@rowe-ma.gov](mailto:boh@rowe-ma.gov).





THE 103<sup>RD</sup> ANNUAL

**HEATH  
FAIR**

2021



**The 103rd Heath Fair will be the Greatest Of All Times (G.O.A.T)!  
Saturday and Sunday (ONLY), August 21 and 22, 2021**

The Heath Agricultural Society members voted to reduce the fair from three days to two for 2021 due to extra constraints/needs related to the Covid-19 pandemic. These two days will be packed to the brim with agricultural fun for the whole family!

New! Online ticket sales will be available! See [www.heathfair.org](http://www.heathfair.org) for more details.

- Pulls and Draws: Antique Tractor, Truck, Lawn Tractor, Horse and Oxen
- Agricultural Tent: Hands-on learning and fun for all ages - taste, touch and learn! Sheep, Poultry, Rabbit and Cow shows AGHA Sanctioned Goat Show - Sunday only
- Midway with Fair Food and local Arts and Crafts
- Demonstrations: Herd Dog demo and Sheep Shearing demo
- Speakers Tent: Featuring history, nature and agriculture
- Exhibit Hall - Packed with locally made arts and crafts, produce and value added products, nature creations, photography and more
- Firemen's Association - Chicken BBQ, Church Ham and Bean Supper

Fair Features: Beer Tent - Local brews under the tent and close to the live music! Live Music: line-up to be announced soon! Horse Gymkhana event returns on Sunday!

Key Changes: No fireworks this year! No square dance: come back in the fall for a square dance event at the fairgrounds!



## Rowe Town Library News

Submitted by Molly Lane, Library Director

**Tuesday 10-5 Wednesday 12-8 Thursday 3-7  
and Saturday 10-3**

The library is open "normal" hours.

No appointments necessary.

If you are more comfortable picking items up  
we will still offer curbside service.

Masks are still required inside the library  
building.

Contact the library if you would like to be  
put on our email notifications for programs  
[Rowelibrary@gmail.com](mailto:Rowelibrary@gmail.com)

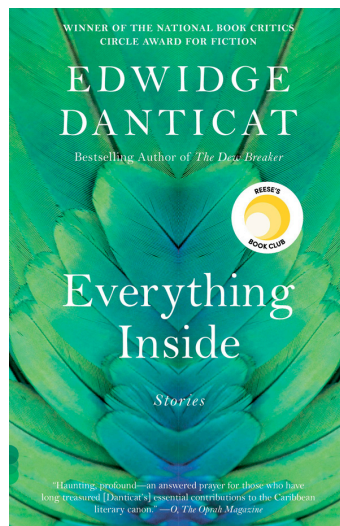
### Programs:

#### Wednesdays -

**August 4 @ 5:30 pm** Building Cane Baskets with Roberta Baker. Pre-registration required. Teens and Adults

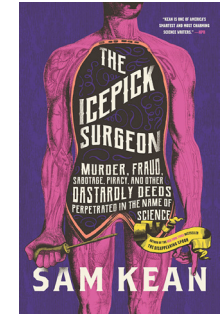
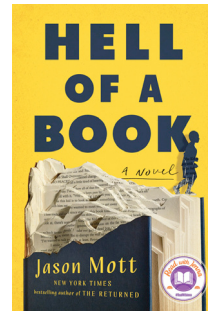
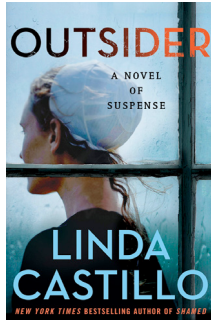
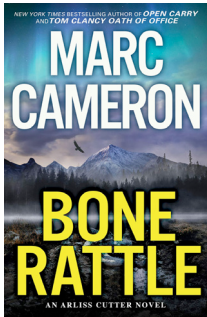
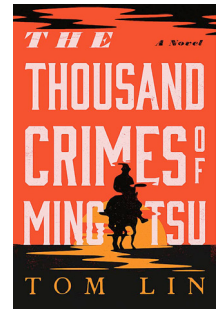
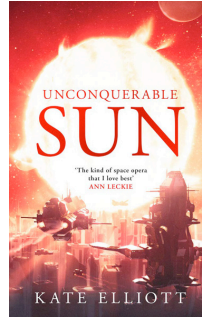
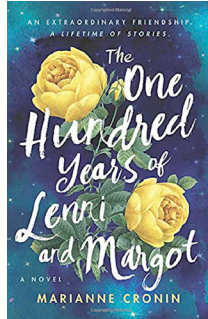
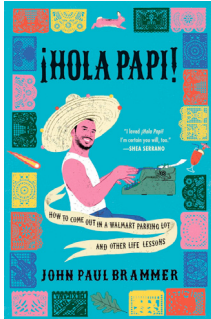
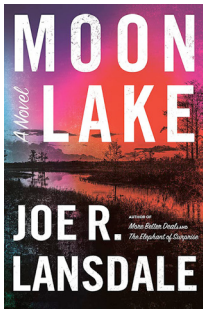
**August 11 @ 3pm** Kids craft- Marble Painting

**August 18 @ 3:30pm** Book Club, all welcome! Pick up your copy of *Everything Inside* Stories by Edwidge Danticat





## Some New Items This Month



Animal Yoga with Kate Peppard





As we hit the midpoint of summer, it's hard to believe that in less than a month (Wednesday, August 25th), the halls, fields, and forests of the school will again be filled the happy sounds of children talking, laughing, playing...and learning. It is a time of renewal, when everything seems fresh, and the possibilities are limitless.

The Rowe School Committee and the Rowe School nurse will be meeting with the Rowe Board of Health to determine how to open safely when the new school years starts. We're receiving guidance from the state, and will be planning how to use the spaces inside and outside the school to deliver education in an engaging, challenging, and safe way. We'll be sharing more details on our plans soon. This past school year was one I hope we will not see the likes of again, but I know that the staff and families of the Rowe School, in cooperation with the School Committee, Board of Health, and NBSU Central Office, will meet whatever challenge we face head-on, and make sure we offer the best learning outcome possible for our students.

This year, we hope to restore our field trips, After School Learning Activities, Rowe soccer team, and pot-luck dinners...details to follow. Our information packet for families will go out mid-August, with the forms needing to be filled out for the beginning of school. Please be looking for that.

Despite the fact that things are slower here at the school during the summer, it has definitely not been quiet. Summer School started the last week of June, and finished the last week of July. Our school secretary, Laurie, has been working hard to get ready for the first day of school. Teachers will be coming in during the month of August, preparing their classrooms for when the students return. As for me, I'm working to figure out how we can get the community more involved in the school. If you have some advice for me on that, or any other topic, please call (413-512-5101) or email ([wknittle@roweschool.org](mailto:wknittle@roweschool.org)). I'd truly like to hear from you.

-Submitted by Bill Knittle



Photos by Bill Knittle



## Factory Village

Submitted by Joanne Semanie



*Town Center looking from the Soule barn. Mill Pond on the left, Town Hall directly ahead, Gracy House to the right. All other buildings are gone.*

Old scrap books often prove invaluable for one who is searching for information little known or related in its context to other happenings in an area which should be linked together. An old scrapbook, which belonged to Mrs. Anna Wells Henry, has a clipping probably from the Greenfield Gazette dated July 30, 1905. The article seemingly was from a piece comparing Rowe and Heath. The part concerning Heath is missing.



*"Pelham Brook, which is a picturesque stream, runs through the village and is dammed to form a small pond back of the town building where pond lilies abound and where there is famous paddling for the small boy. Just below the dam and the old sawmill (Moses Bullard's) the brook drops over a series of rocky falls on its way to Zoar. At the foot of the falls still stand the old bed factory (Eddy's) soon to give way to a newer enterprise, while way down the falls may be picked out the site of the old grist mill (which did such rough work that one aggrieved patron in the old days begged that the product might at least be sifted through a ladder). Near the falls was also an old tannery too, there stood near the old village, an old satinette factory, so that the little cluster of buildings came well by its earlier name of factory village."*

*Looking up Pelham Brook towards the dam. Sawmill on left, blacksmith on right*

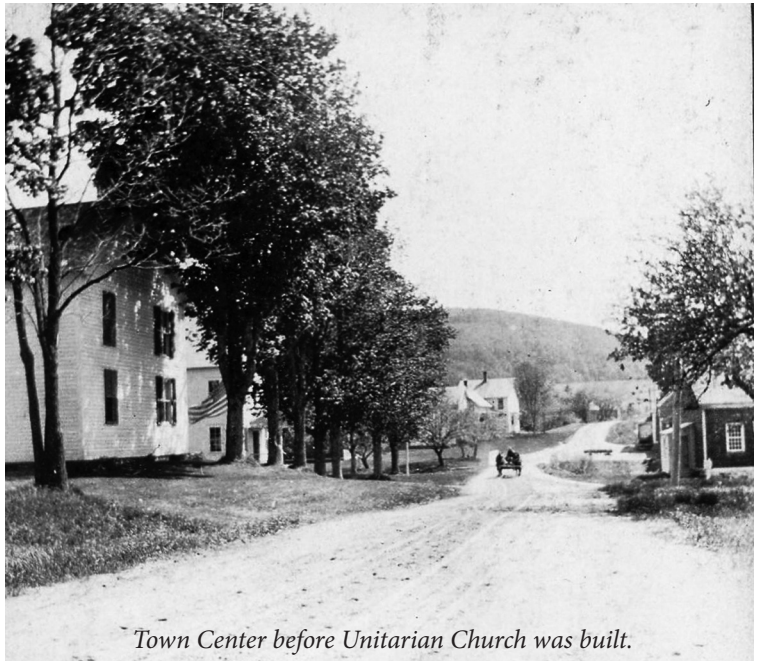




*Looking towards Town Hall from the dam on Mill Pond. Again, all buildings are now gone*

In the museum are two old receipts found among the old papers of B.T. Henry. They were printed for the Factory Village Association.

*"When the present "Middletown" of Rowe was still called "factory village", the central village was perched higher up on the hillside where the deserted Unitarian Church (built 1843 between what is now the Adams and Levitre houses on Ford Hill Rd) stood with other buildings. The change of the village center from the hill to the lower ground beside the brook is but another token of the same dwindling population once more. Rowe today has some 550 including the foreign miners at Davis Sulphur Mine. In 1840, when the population was 800, Rowe appears to have reached its greatest size. (According to the 2010 census it*

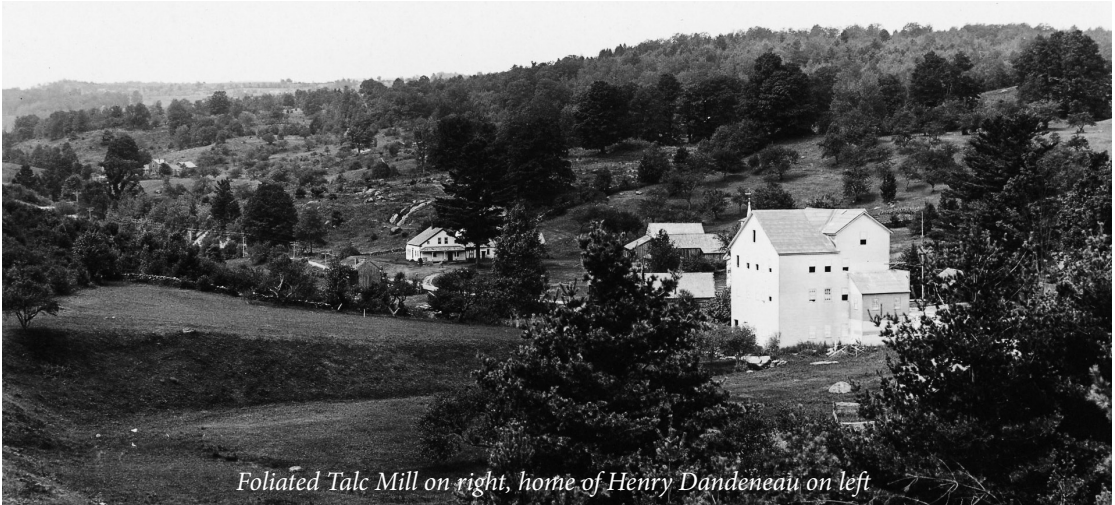


*Town Center before Unitarian Church was built.*

*was 393). It might be noted here that waterpower from the brook might have had something to do with the move from the Old Center to this development of small factories along the brook. Another name for this "Factory Village" was "Slab City" so called because of the sawmill at Pelham Brook and Kings Highway.*

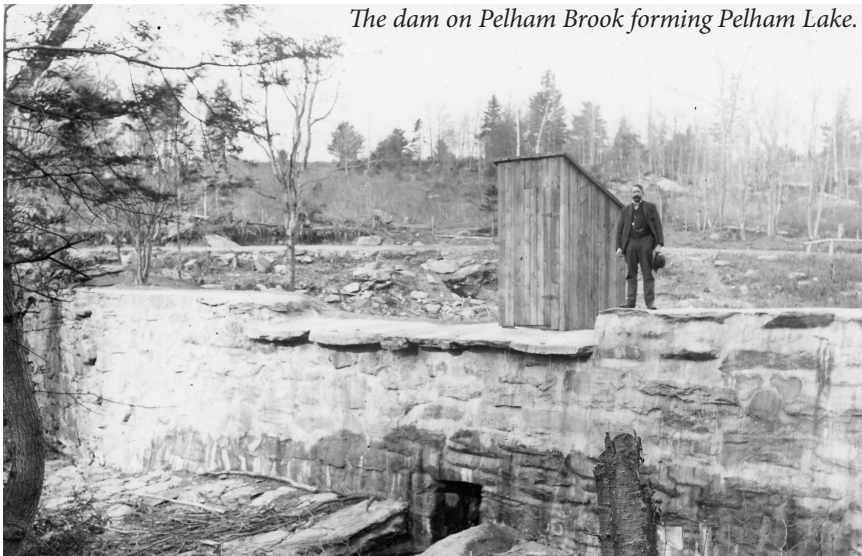
*Since factory village has become the center of the town and the old Unitarian Church on the hill was abandoned a few years ago, the Unitarian Services have been held in the town building. The town building is also the meeting place for the Grange.*

*Plans are being made for a new industry. The Foliated Talc Company plans to construct a new dam at the old reservoir on Pelham Brook, to erect a grinding mill further down the stream on the south side of the brook and to begin a mine in a rich vein of talc in a hill on the north side of the village” (beyond James Williams farm on what was once the old Bullard Farm).*



*Foliated Talc Mill on right, home of Henry Dandeneau on left*

The Foliated Talc Mill stood across from the Village School (now the museum). Waterpower for the talc mill was supplied by a long metal flume from the pond which supplied water for the sawmill. The sawmill was supplied by water from Pelham Brook and the Reservoir (Pelham Lake) which formerly supplied the old satinette factory. The operation of the talc mill ceased in 1922.



*The dam on Pelham Brook forming Pelham Lake.*

*“The new dam already practically completed means the creation of a beautiful pond of 140 acres with a wooded island and wooded shores along one side of which runs the road to Heath. This might well be the magnet to draw summer cottages.”*



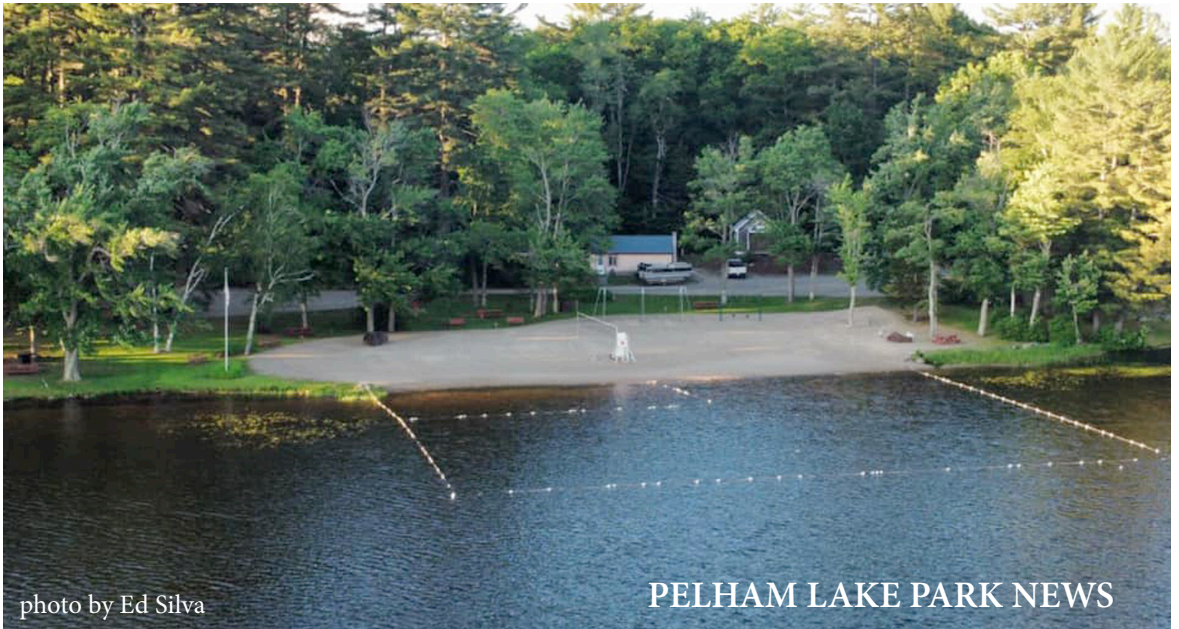


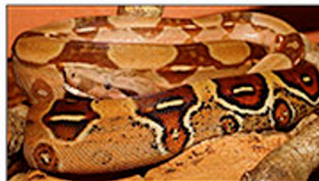
photo by Ed Silva

## PELHAM LAKE PARK NEWS

Children ages 5-12 are invited to participate in a free *Patterns in Nature* program at Pelham Lake Park on August 3, 2021 from 10:00 to 11:30 am. The Presenter, Helen Sephton, has been teaching children and families at the Hitchcock Center for the Environment for over 25 years.

There are so many wonderful patterns in nature from chipmunk stripes to ladybug spots, from pine cones to sunflower seeds. Come learn to identify what makes a pattern and find out how these designs can help animals, plants, and people. Our Patterns in Nature Scavenger Hunt will inspire creations through mud sculpture and painting. Join us for a morning of fun exploring and creating in the great outdoors. If you are interested, please sign-up by calling the park at 339-8554.

Sponsored by The Rowe Cultural Council.





### How to attract wildlife to your yard and garden

(reprinted with permission from the August 1992 GoalPost)

First start with a good-sized perennial garden. Bring in some yew bushes. These attract deer and they will browse them to the bare bones. Then bring in a few large rocks. These are excellent means for attracting woodchucks. Be sure and plant flowers in front of the rocks. The woodchucks will dig deep holes under the rocks and turn up huge piles of dirt on your flowers. This may even be good for aerating the soil. Don't plant lilies for these only attract people. If you do plant them, then have a few piles of small rocks which make good homes for snakes. These unfortunately will eat a few of your bugs but they will definitely keep a large majority of humans away from admiring your garden and disturbing your wildlife.

Do a good bit of transplanting from one part of the garden to another and this will surely attract the skunks who love to dig holes looking for grubs while uprooting your newly planted flowers. Plant lots of flowers and hosta for voles love to eat plants and their roots and you will be delighted with all their tunnels under your plants. Any flowering plants will attract butterflies and be overjoyed if they are monarchs because they will lay eggs on your butterfly-weed and you will have many caterpillars who will devour your butterfly-weed. (You didn't like orange-colored blossoms anyway.)

Primroses and other roses will attract Japanese beetles. Plant a little pink loosestrife and you may be the champion beetle attractor in town and you will not be bothered with pink blossoms anymore. Be sure and install a bird bath in the yard. This will not only attract birds who will splash all the water out but also raccoons who, in the process of washing their strawberries which they stole from your pet potted plants, will topple the bird bath and break it. Cute little creatures! A bird bath pedestal with a hole under the dish is also a good place to house your earwigs during the day. Hundreds of them will collect in this warm safe place and you will be delighted with their feasting among your flowers at night.

Don't plant things in round circles - square beds with corners are much more attractive for male dogs. This may or may not be good fertilizer for the garden. Rabbits - now everyone wants to attract rabbits. A nice bush of rhodora will be good for them to gnaw on and they do like fresh tulip buds. This keeps your plants from becoming too big and overcrowding your garden. If you attract dogs, they will chase the rabbits and keep most of your plants in a prostrate position.

It's nice to have birds in the garden, so put up a few bird houses. This will make your rocks more attractive for they soon will have white tops from the bird droppings. Houses will attract tree swallows and they will dive bomb you whenever you go near the garden so you'll have to give up that tiresome weeding and stay indoors. Slugs are attracted to your flower garden. Have some object like a large strawberry pot and slugs will find a perfect place to hide so you can take bets on how many hollyhock leaves they can devour in one night.

Now some kind of water garden with succulent underwater vegetation would be a great highlight for your garden and can't fail to attract the occasional wandering moose who will eat most everything and tramp through the rest.

Aphids come without being invited and do a good job ruining your favorite perennial. How-

ever, they attract ants which make large hills and undermine your plants. Finally, if you plant a crop of blackberries in among the anthills, you will call in the bears who will tear up your whole garden looking for the juicy berries and the ants and your garden will be all cultivated, mulched and fertilized and you can make a fresh start buying new flowers and replanting everything for another season!!

Happy gardening!!

Nan Williams

Some wildlife resistant garden flowers:

photos by Sue Williams



Cup plants



Black Cohosh



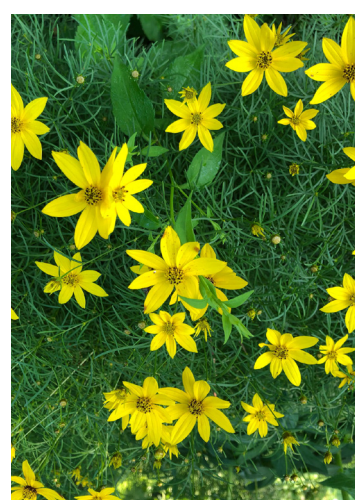
Queen of the Prairie



Sundrops



Daylily



Coreopsis



Massachusetts State Collegiate Athletic Conference  
Announces the 2021 Hall of Fame Class

**Claudine (Rice) Poplawski** from Westfield State class of 1995, has been chosen student athlete from a female team.

Claudine gained national recognition for Westfield State as an elite hammer thrower in the mid 1990s. She won the 1994 NCAA Division III National Championship in the hammer throw with a winning distance of 169-5. Her biggest accomplishment was winning the prestigious Penn Relays in 1995 competing against 12 NCAA Division I athletes. Poplawski unleashed a school record throw of 176-9 to earn the top spot on the victory stand. Just after her victory at the Penn Relays, Claudine was ranked the 10th best hammer thrower in the world, according to Track & Field News.

Claudine and her husband Dan live in Rowe with their three daughters. She teaches third and fourth grades at Rowe Elementary and is very active in outdoor classroom education. The whole family is often seen out on the park trails or running the roads of Rowe.





### To The Residents and Taxpayers

As I think back at my 26 years living here in Rowe, I realize that I have spent 25 years serving the town of Rowe as the Assessors Clerk, Administrative Asstt, Election Officer, Deputy Warden, Pound Keeper, Co-Chairman for the Council on Aging. As the Tax Collector, I served 23 years until the Collector's position was voted to change from elected to appointed. I continued to work in this position until the end of June 2021. A decision was also made to combine the two positions to make them one, Tax Collector/Treasurer which has resulted in me not being reappointed.

I have enjoyed serving the community and our beautiful town and the special people that live here.

I want to thank all the townspeople who put their trust in me. You made my job seem effortless.

I want to especially thank the Assessors for the heart warming farewell gathering, it was such a very thoughtful gesture to acknowledge me.

I will miss seeing everyone at the Town Hall. I will cherish all the memories.

In addition, I want to inform the town of my resignation from the Council on Aging as the Co-Chairman. I have really enjoyed the 20 years that I had served on the COA. I will miss the great times that we have had but I have the fond memories to look back on. We have also had some sad times, as I think of all the precious seniors that we have lost.

Thank you for being so kind and accepting me as part of the Rowe family.

Sadly,

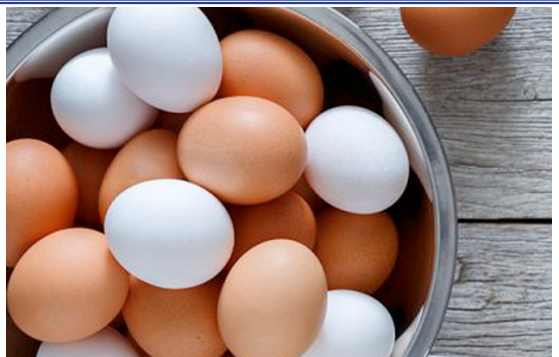
Sandy Daviau

### Eggs for Sale!

We have chicken and sometimes duck eggs for sale at  
60 Shippee Road.

There is a refrigerator on the porch if we are not  
home.

Margie Morse



## PUBLIC HEALTH NURSE POSITION AVAILABLE

The Rowe Board of Health is currently interviewing candidates for a Part-time (16 Hour/Week flexible) Public Health Nurse.

## QUALIFICATIONS/REQUIREMENTS

Registration by the Commonwealth of Massachusetts as a Registered Nurse; two years of nursing experience; public health experience preferred or an equivalent combination of education and experience. This job is a good fit for applicants with gaps in their resume, or who have been out of the workforce for the past 6 months or more.

*Complete job description available from the BOH at 413-339-5520 ext 105*

Send your resume to [boh@rowe-ma.gov](mailto:boh@rowe-ma.gov) or to

Board of Health

321 Zoar Rd.

Rowe, MA 01367

## Rowe Community Church

Submitted by Ros Mullette

Aug.	1	Praise & Worship Service & Observance of The Lord's Supper
	8	Praise & Worship Service
	15	Praise & Worship Service
	22	Praise & Worship Service
	29	Praise & Worship Service

Bible studies are held on Wednesdays and will be held on August 4, 11, 18, and 25th at 7:00 p.m.

## August Birthdays

- 1 - Henry Dandeneau
- 2 - Doris Fensky
- 2 - Norma Denson
- 4 - Nicole Denouden
- 3 - Virginia Gary
- 6 - Benjamin Rose-Fish
- 6 - Lenny Laffond
- 6 - Raymond Boutwell
- 8 - Ellynn Packard
- 13 - Richard Hamilton
- 13 - Linda Avery
- 14 - Robin Booth
- 16 - Raymond Wilson
- 20 - Jay Williams
- 22 - Andrea Crowningshield
- 23 - Leah Posl-Lumbis
- 23 - Christine Bailey
- 24 - Presley Veber
- 24 - Daniel Wessman
- 25 - James Sousa
- 25 - Eugene Donovan
- 27 - Kyle Shippee
- 27 - Rebecca Katz
- 29 - Shannon Haddock
- 30 - Herbert Butzke
- 31 - Jeanette Crowningshield

If you would like to add or remove a name from this list, please contact me at:  
[GoalPostEditor@gmail.com](mailto:GoalPostEditor@gmail.com)



## *Town Services*

<u>Position/Dept.</u>	<u>Ext #</u>	<u>MAIN</u>	<u>Alternate</u>		<u>Email Addresses</u>
		<b>PHONE#</b>	<b>Phone #</b>		
Admin Assistant	101	339-5520			
Assessors Office	104	339-5520			<a href="mailto:assessor@rowe-ma.gov">assessor@rowe-ma.gov</a>
Assessors FAX			339-8585		
Board of Health	105	339-5520			<a href="mailto:boh@rowe-ma.gov">boh@rowe-ma.gov</a>
Conference Rm 2nd Fl	148	339-5520			
DPW	111	339-5520	339-5588		<a href="mailto:dpwhighway@rowe-ma.gov">dpwhighway@rowe-ma.gov</a>
Executive Secretary	100	339-5520			<a href="mailto:townadmin@rowe-ma.gov">townadmin@rowe-ma.gov</a>
Fire	112	339-5520	339-4001		<a href="mailto:firechief@rowe-ma.gov">firechief@rowe-ma.gov</a>
Fitness Room	149	339-5520			
Hearing Room #1	150	339-5520			
IT/Server Closet Area	147	339-5520			
Library	114	339-5520	339-4761		<a href="mailto:rowelibrary@gmail.com">rowelibrary@gmail.com</a>
Park	110	339-5520	339-8554		<a href="mailto:parkmanager@rowe-ma.gov">parkmanager@rowe-ma.gov</a>
Police	113	339-5520	339-8340	339-0139 (H)	<a href="mailto:policechief@rowe-ma.gov">policechief@rowe-ma.gov</a>
Tax Collector	106	339-5520			<a href="mailto:collector@rowe-ma.gov">collector@rowe-ma.gov</a>
Town Accountant	102	339-5520			<a href="mailto:accountant@rowe-ma.gov">accountant@rowe-ma.gov</a>
Town Clerk	103	339-5520			<a href="mailto:townclerk@rowe-ma.gov">townclerk@rowe-ma.gov</a>
Town Nurse	107	339-5520			<a href="mailto:nurse@rowe-ma.gov">nurse@rowe-ma.gov</a>
Treasurer	108	339-5520			<a href="mailto:treasurer@rowe-ma.gov">treasurer@rowe-ma.gov</a>
Gracy House	-		339-4276		
School			413-512-5100		
Town Hall FAX			339-5316		

### **Town Main Line at 413-339-5520**

Town Hall has reopened as of June 17<sup>th</sup> for normal business hours 8:00 a.m. to 5:00 p.m. When visiting Town Hall, please wear a mask if you have not been vaccinated for Covid-19 or if you feel it necessary. Please contact Executive Secretary at: (413)339-5520 ext. 100 for appointments whenever possible.

Please note: The Fitness Center reopening date has not been set as yet.

The Rowe Goal Post  
P.O. Box 462  
Rowe, Massachusetts 01367

## **The Rowe Goal Post**

Available on the Town's website (<https://rowe-ma.gov/p/64/Rowe-Goal-Post>)  
the first of every month with paper copies sent out by mail the first week

Published by the Board of Selectmen 'in the interest of information  
exchange between all departments and all Rowe citizens.'

All submissions for the next issue are due by the 25th.  
Any articles received after this time cannot be guaranteed that  
they will appear in the next issue.

Please e-mail all items to:  
[GoalPostEditor@gmail.com](mailto:GoalPostEditor@gmail.com)

Please send only high resolution images (do not resize).

If you have a question about your subscription or want to make a change to the mailing list,  
please contact the Town Administrator at:

(413) 339-5520 x11  
[admin@rowe-ma.gov](mailto:admin@rowe-ma.gov)

Seasonal residents MUST notify the Administrator of any change in address.